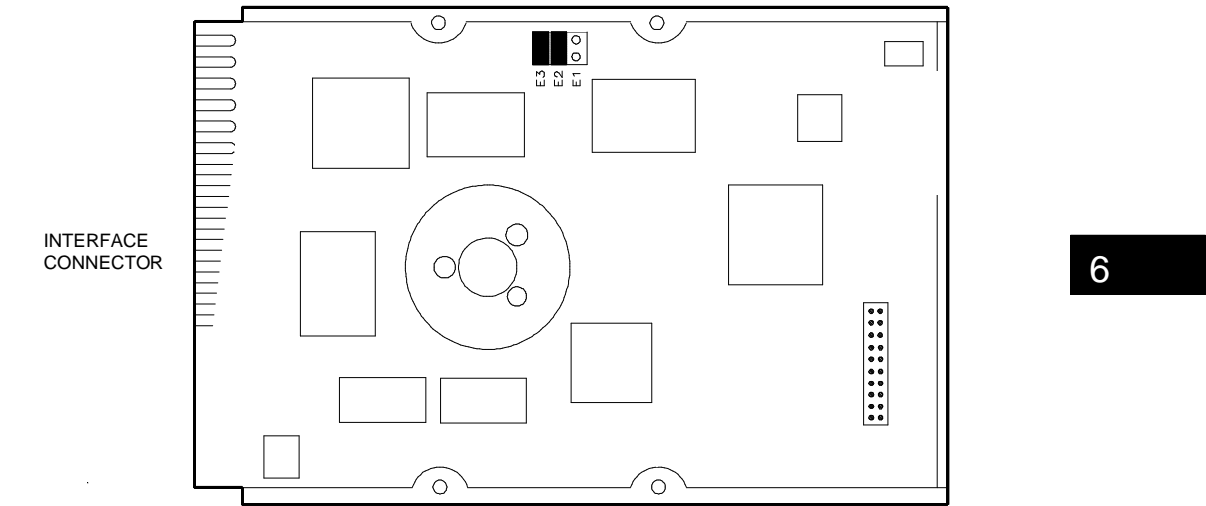


MCA HARD DISK DRIVES

Note: The Micro Channel interface HDUs generally do not require any terminators or jumper settings for installation; the only exceptions are the 60 and 120 MB HDU with MGO-01 and MOL-01 configurations respectively. The other MCA HDUs are not described in this chapter.

60 MB HDU 120 MB HDU	CONNER CP30069 CONNER CP30129	MCA
-------------------------	----------------------------------	-----



MODEL	ROTATION	CYLINDERS	DISKS	HEADS	RECORD.
CP30069	3409 RPM	1524	1	2	RLL
CP30129	3409 RPM	1524	2	4	RLL

Note: There is no provision for connection of two of these drives in one system; such a setting does not work therefore even if the HDU board has the master/single or slave drive selection jumpers, must always to select master/single drive. With any other setting, the drive will not work.

JUMPERS	MASTER / SINGLE DRIVE SELECTION
E1	OFF
E2	ON
E3	ON