

**Stampante - Printer**

# **PR 4 SLIP**

**CATALOGO PARTI DI RICAMBIO  
SPARE PARTS CATALOGUE**

**Code 687790F-00**

---

## **IMPORTANTE**

PUBBLICAZIONE REDATTA DA OLIVETTI LEXIKON (GESTIONE RICAMBI E SCORTE).  
QUESTO CATALOGO È L' UNICO DOCUMENTO AL QUALE FARE RIFERIMENTO PER  
ORDINARE LE PARTI DI RICAMBIO.

## **IMPORTANT**

THIS PUBLICATION IS WRITTEN BY OLIVETTI LEXIKON (SPARE PARTS DEPARTMENT).  
THIS CATALOGUE IS THE ONLY DOCUMENT TO WHICH REFERENCE MAY BE MADE  
FOR ORDERING SPARE PARTS.

---

**PUBBLICAZIONE EMESSA DA:**  
**PUBLICATION ISSUED BY:**

**Olivetti Lexikon, S.p.A.**

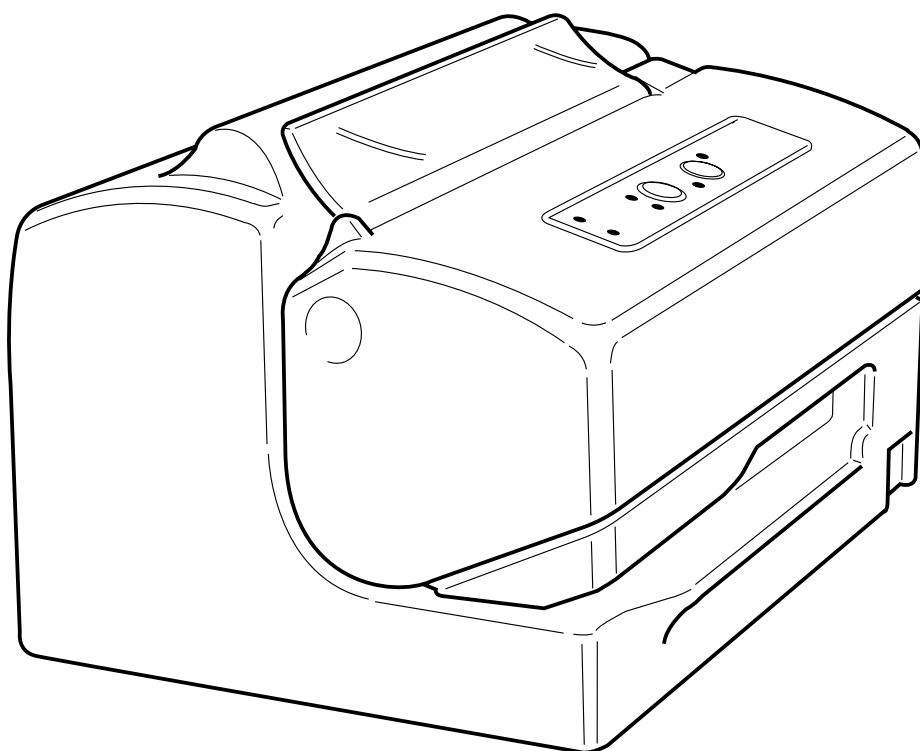
Documentazione

77, Via Jervis - 10015 Ivrea (Italy)

*Copyright © 2000, by Olivetti Lexikon*

*All rights reserved*

*Printed in Italy by:*



## PR 4 SLIP

**INDICE**

GRUPPO CARROZZERIA .....	Pag. 3
GRUPPO FONDELLO .....	" 4
GRUPPO STRUTTURA STAMPA 1 .....	" 5
GRUPPO STRUTTURA STAMPA 2 .....	" 6
GRUPPO STRUTTURA STAMPA 3 .....	" 7
GRUPPO STRUTTURA STAMPA 4 .....	" 8
GRUPPO STRUTTURA STAMPA 5 .....	" 9
GRUPPO STRUTTURA STAMPA 6 .....	" 10
GRUPPO STRUTTURA STAMPA 7 .....	" 11
COMPONENTI ELETTRICI .....	" 12

<b>INDICE GENERALE DEI CODICI .....</b>	<b>Pag. 13</b>
---	----------------

**INDEX**

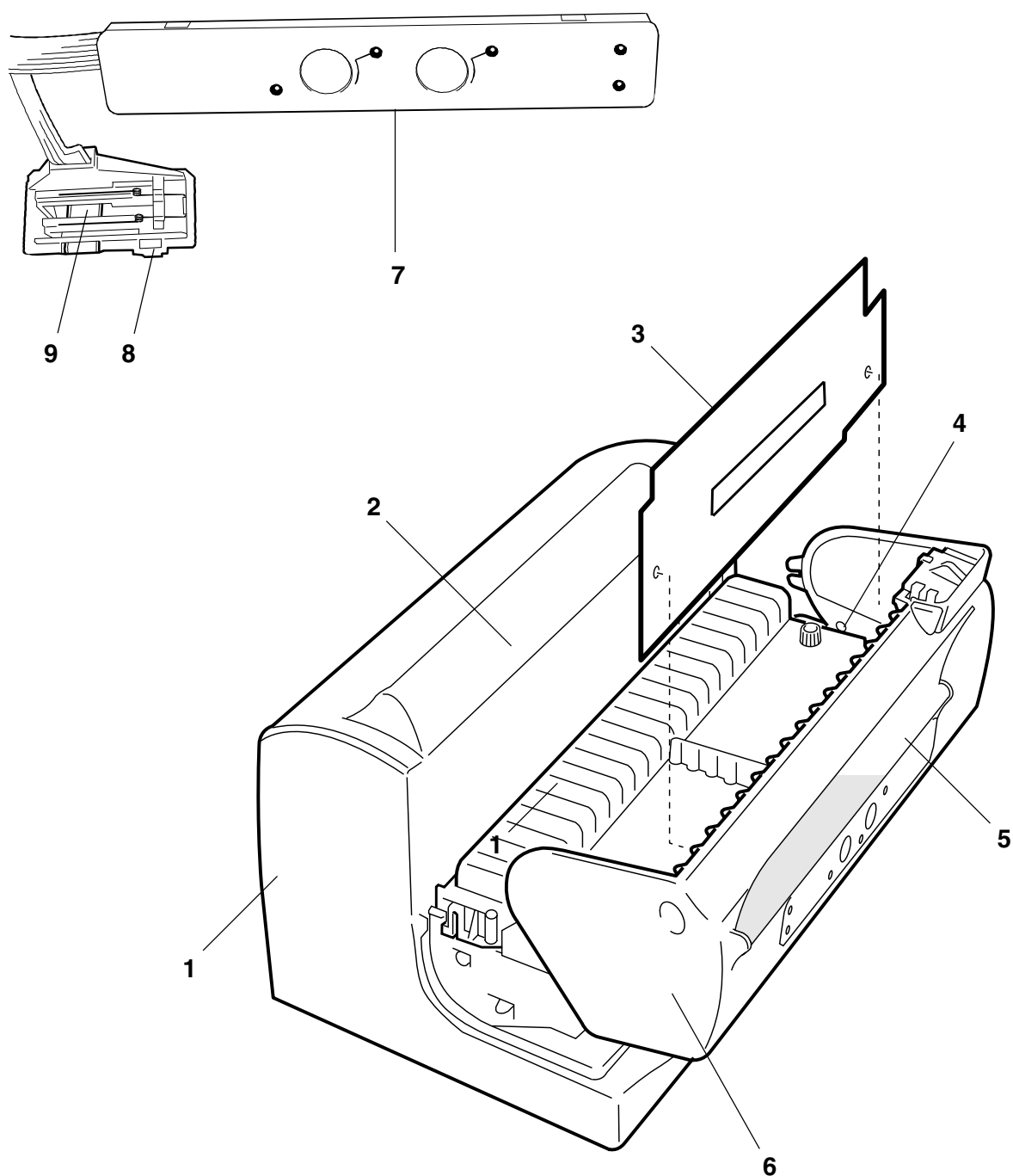
CASING ASSEMBLY .....	Pag. 3
BASE UNIT .....	" 4
PRINTING SECTION 1 ASSEMBLY .....	" 5
PRINTING SECTION 2 ASSEMBLY .....	" 6
PRINTING SECTION 3 ASSEMBLY .....	" 7
PRINTING SECTION 4 ASSEMBLY .....	" 8
PRINTING SECTION 5 ASSEMBLY .....	" 9
PRINTING SECTION 6 ASSEMBLY .....	" 10
PRINTING SECTION 7 ASSEMBLY .....	" 11
ELECTRICALS COMPONENTS .....	" 12

<b>GENERAL INDEX .....</b>	<b>Pag. 13</b>
----------------------------	----------------

# GRUPPO CARROZZERIA CASING ASSEMBLY

PR4 SLIP

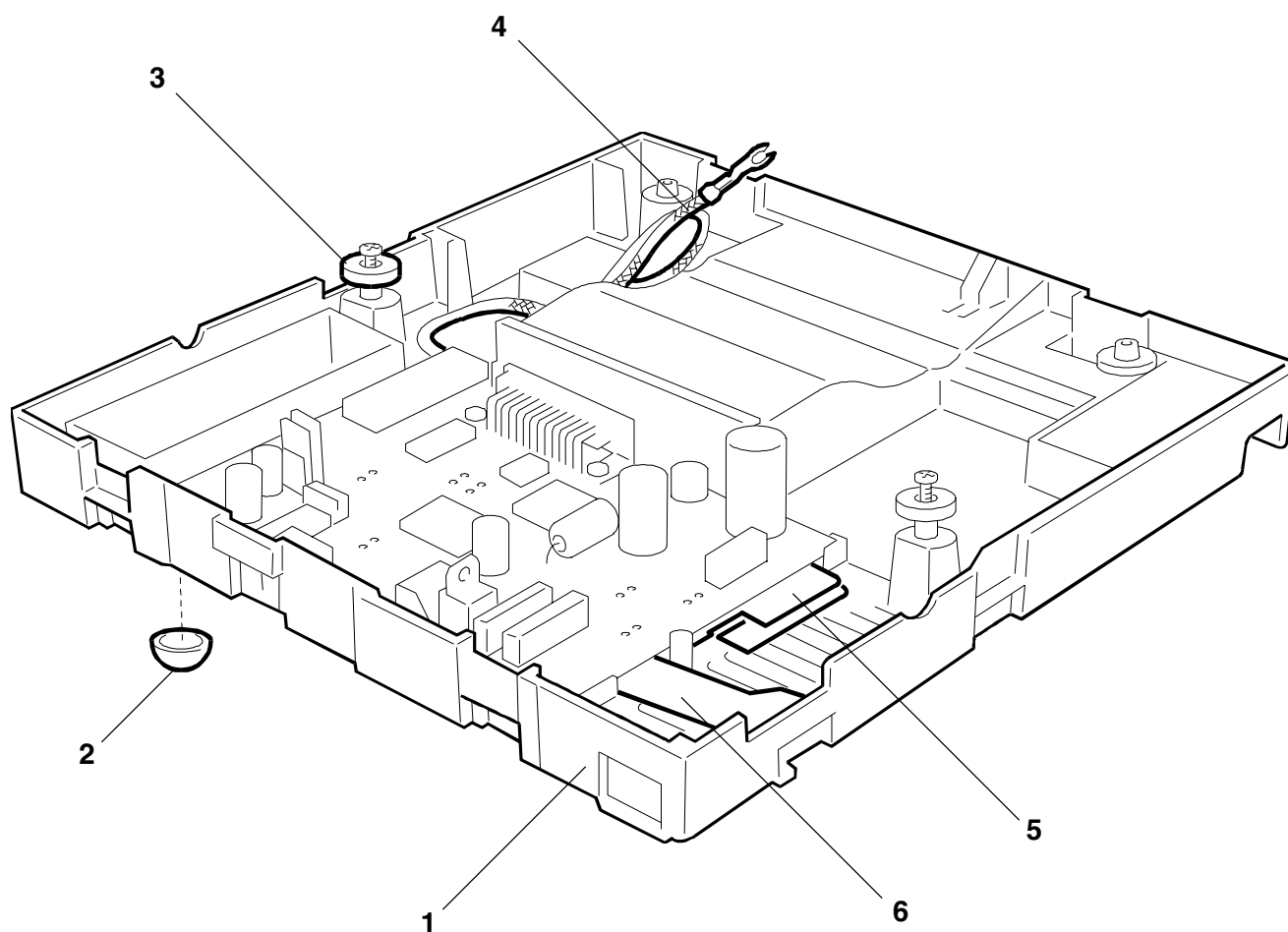
REF.	CODE	DESCRIZIONE	DESCRIPTION
1	475534 M	GRUPPO SCOCCA	CASING ASSEMBLY
2	475536 P	COPERTURA POSTERIORE)	REAR COVER
3	474698 H	FONOASSORBENTE PER COPERTURA ANT.	FRONT COVER DEADENING
4	474424 N	GOMMINO SUPPORTO COPERTURA ANTER.	FRONT COVER SUPPORT RUBBER
5	474443 Z	VETRINO PER COPERTURA ANTERIORE	FRONT COVER GLASS
6	475662 D	COPERTURA ANTERIORE	FRONT COVER
7	475538 Z	GRUPPO CONSOLE	CONSOLE ASSEMBLY
8	474427 R	SUPPORTO MICRO	MICRO SWITCH SUPPORT
9	475685 W	MOLLA SUPPORTO MICRO	MICRO SWITCH SUPPORT SPRING



# GRUPPO FONDELLO BASE UNIT

PR4 SLIP

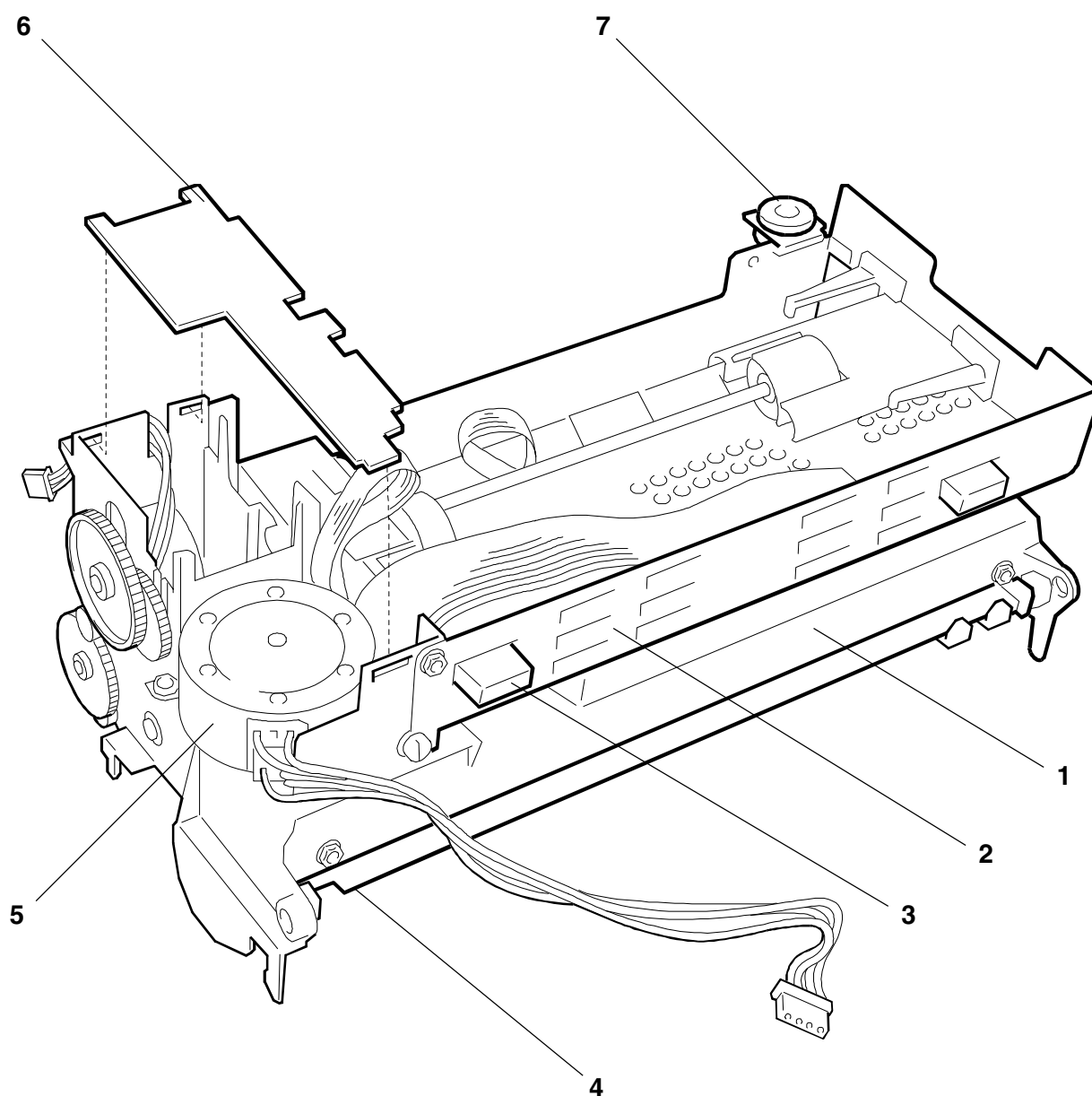
REF.	CODE	DESCRIZIONE	DESCRIPTION
1	475535 N	GRUPPO FONDELLO	BASE UNIT
2	470925 U	GOMMINO APPOGGIO	RUBBER REST
3	474430 Y	RONDELLA FISSAGGIO STAMPANTE	PRINTER FASTENING WASHER
4	474333 S	CAVO GND STRUTTURA	STRUCTURE GND CABLE
5	474429 T	MYLAR PIASTRA	BOARD MYLAR
6	474423 M	LAMIERA SCHERMO PIASTRA	BOARD SHIELD PLATE



# GRUPPO STRUTTURA STAMPA 1 PRINTING SECTION 1 ASSEMBLY

PR4 SLIP

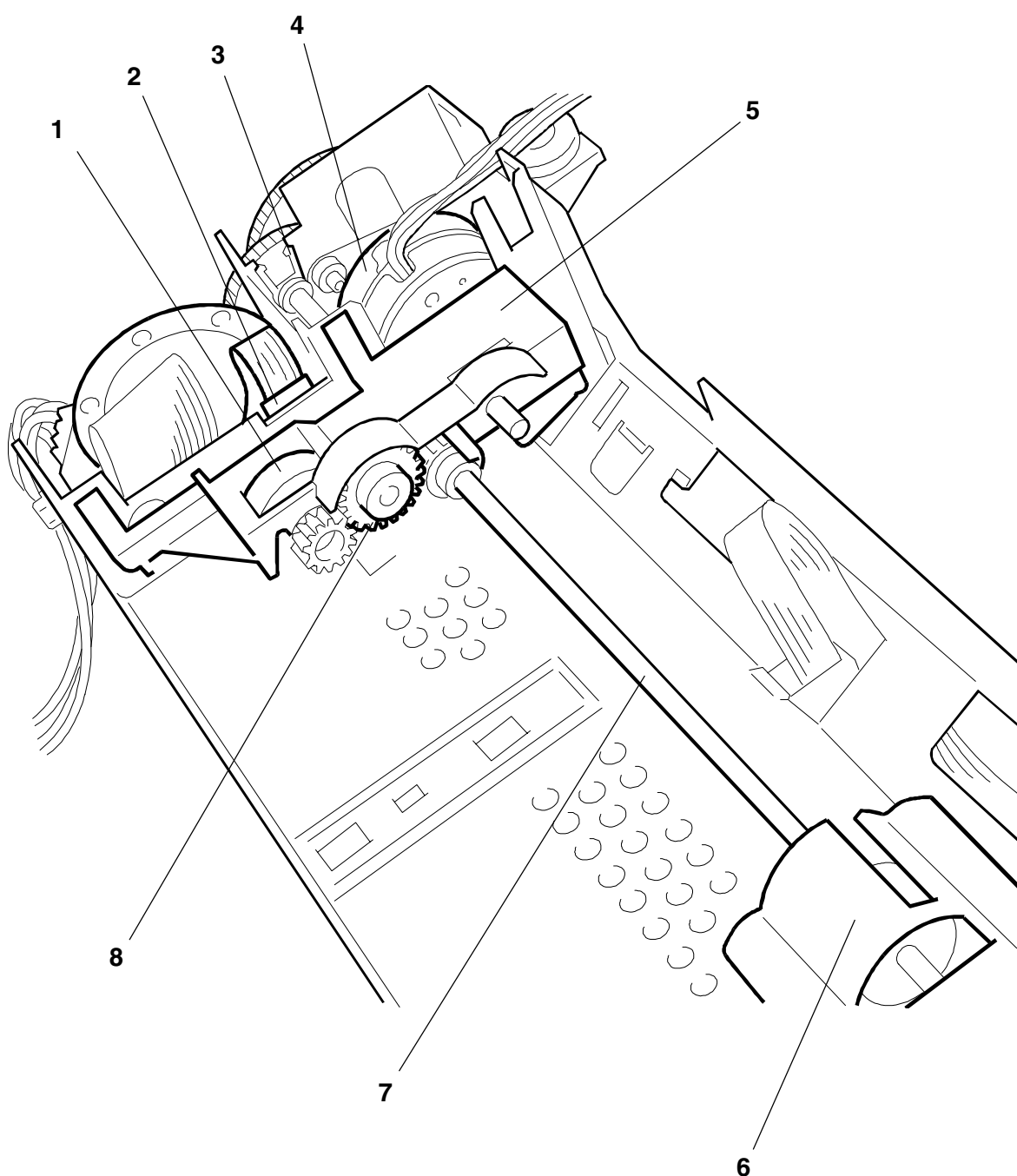
REF.	CODE	DESCRIZIONE	DESCRIPTION
1	474015 P	STRUTTURA IN ZAMA	STRUCTURE
2	475675 A	LAMIERA STRUTTURA	STRUCTURE PLATE
3	474421 K	PIEDINO ANTER. APPOGGIO STAMPANTE	PRINTER RETAINING FRONT FEET
4	474031 P	LAMIERINO REGOLAZIONE CARRELLO	CARRIAGE ADJUSTMENT PLATE
5	474021 M	MOTORE TRASPORTO	TRANSPORT MOTOR
6	474079 F	TAPPO COPRICALI	COVER CABLE PLUG
7	722149 A	GOMMINO FISSAGGIO	FIXING RUBBER



# GRUPPO STRUTTURA STAMPA 2 PRINTING SECTION 2 ASSEMBLY

PR4 SLIP

REF.	CODE	DESCRIZIONE	DESCRIPTION
1	475201 G	GR. RULLINO CONTRASTO ALLINEAMENTO	ALIGNMENT CONTRAST ROLLER ASSY
2	474075 T	GR. FOTO ALLINEAMENTO	ALIGNMENT PHOTO ASSY
3	474040 C	BOCCOLA (Npz=2)	BUSH (PCS=2)
4	474020 Y	MOTORE SLIP	SLIP MOTOR
5	474042 S	SUPPORTO INGRANAGGI	GEARS SUPPORT
6	474071 X	STAFFA SUPP. ALBERO MOTO ALLINEAM.	ALIGNMENT MOTION SHAFT SUPPORT ROD
7	475677 C	ALBERO MOTO ALLINEAMENTO	ALIGNMENT MOTION SHAFT
8	474045 V	RUOTA OZIOSA	IDLER GEAR

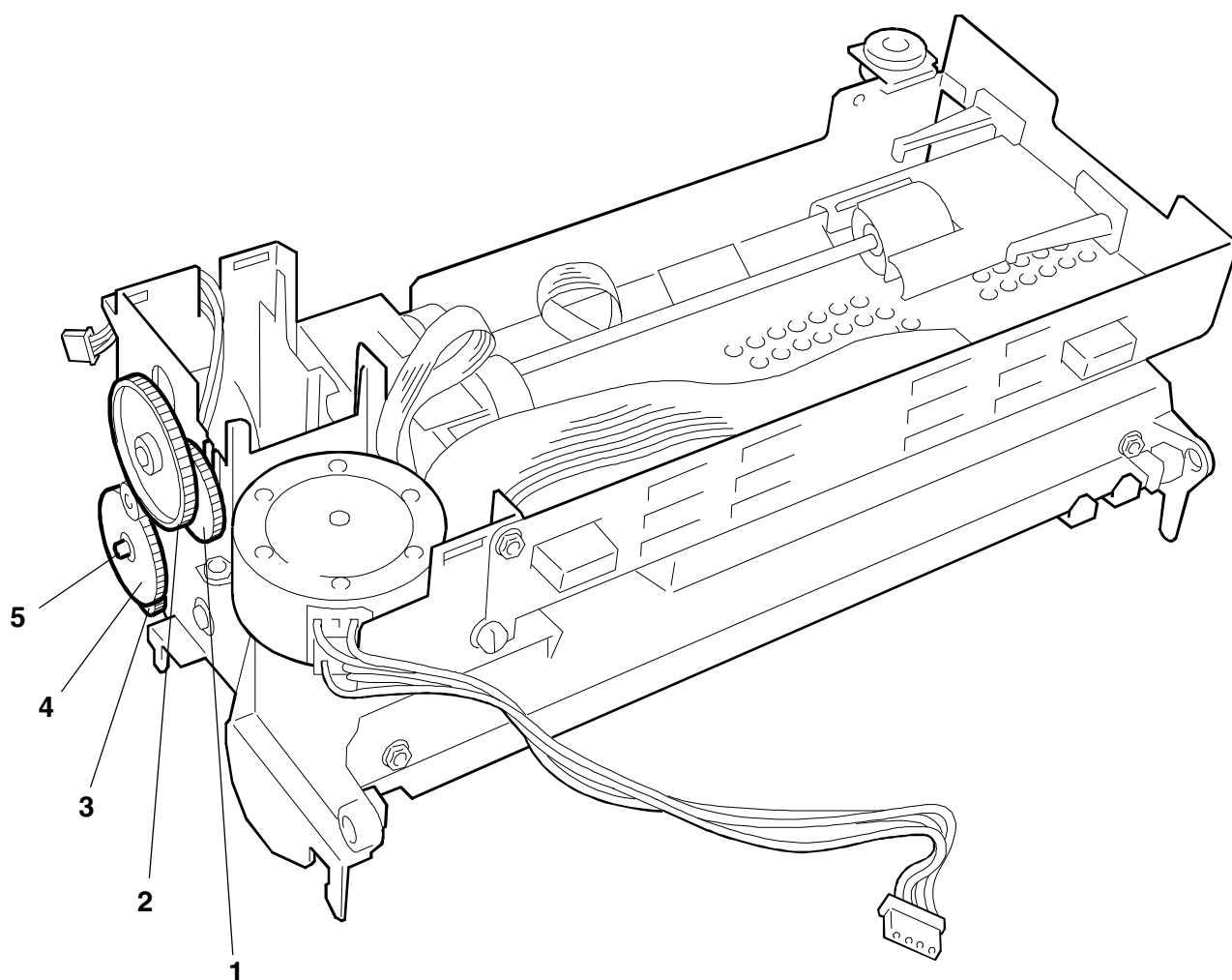




# GRUPPO STRUTTURA STAMPA 3 PRINTING SECTION 3 ASSEMBLY

PR4 SLIP

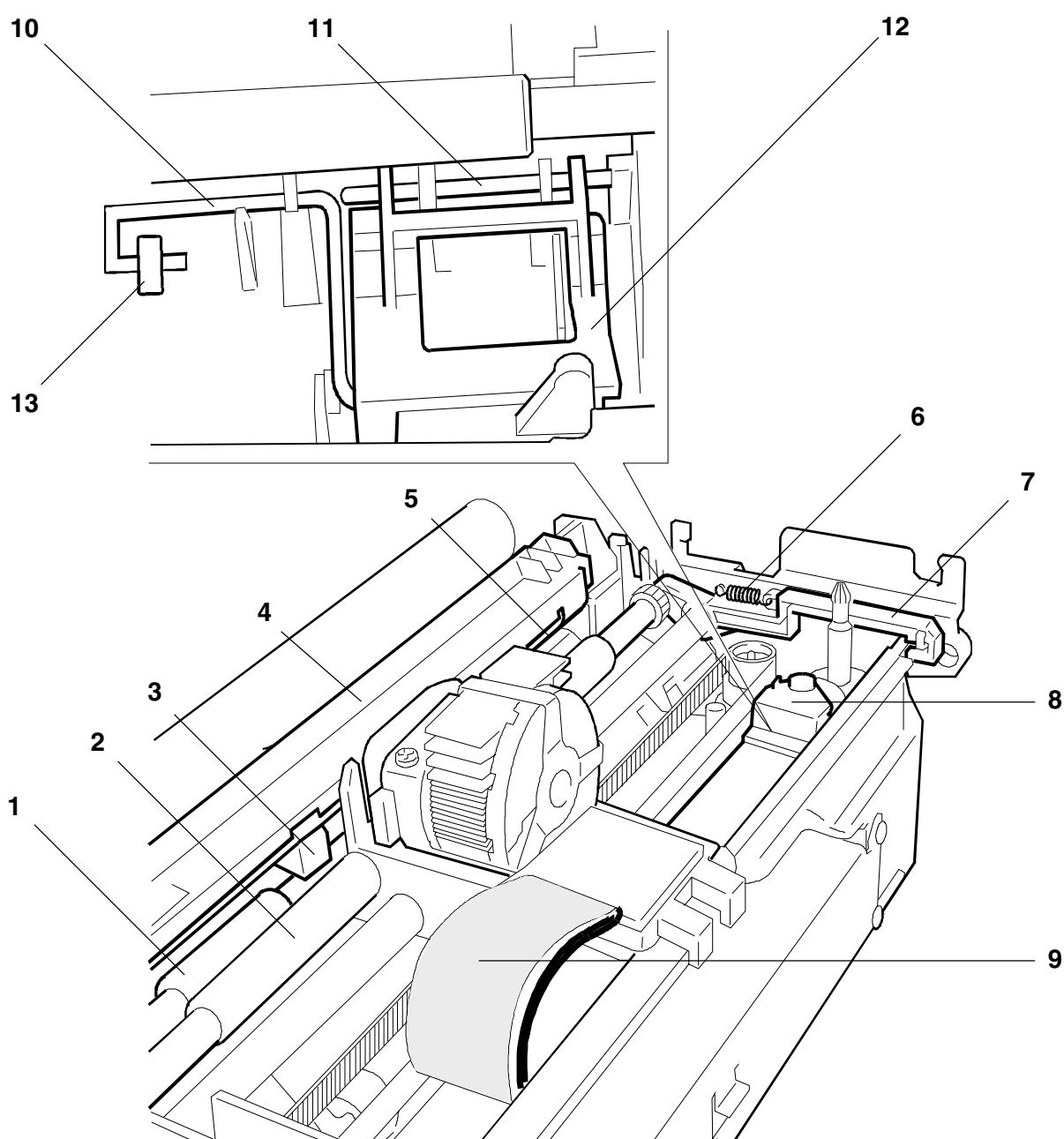
REF.	CODE	DESCRIZIONE	DESCRIPTION
1	474077 V	RUOTA ALBERO ALLINEATORE	ALIGNMENT SHAFT GEAR
2	474076 U	RUOTA RINVIO ALBERO ALLINEAMENTO	ALIGNMENT SHAFT INTERMEDIATE GEAR
3	474039 X	RUOTA PER RULLO SLIP	SLIP ROLLER GEAR
4	474028 U	RUOTA INTERLINEA	LINE FEEDING GEAR
5	474027 K	PERNO PER RUOTA INTERLINEA (Npz = 3)	LINE FEEDING GEAR PIN (Pcs = 3)



# GRUPPO STRUTTURA STAMPA 4 PRINTING SECTION 4 ASSEMBLY

PR4 SLIP

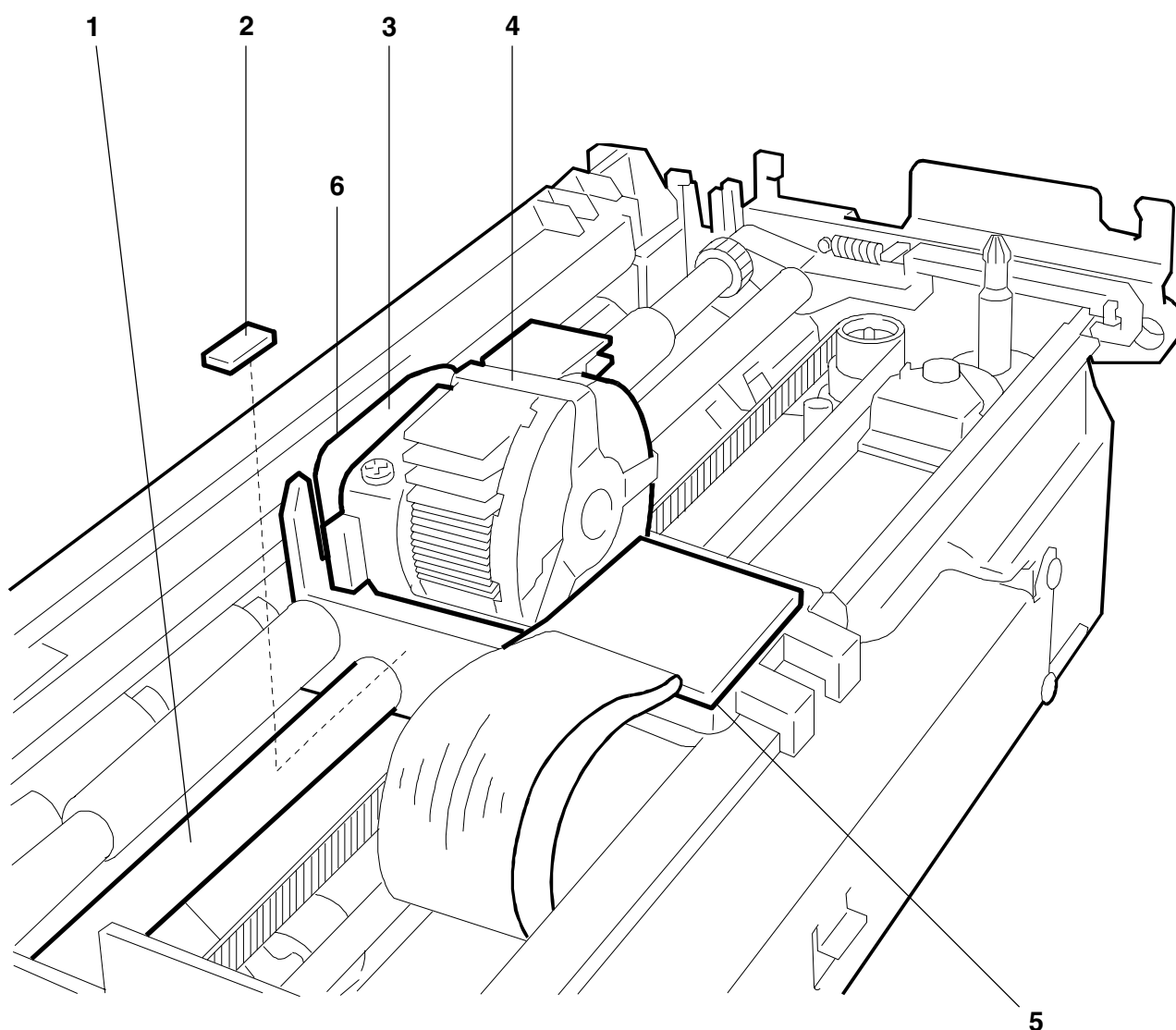
REF.	CODE	DESCRIZIONE	DESCRIPTION
1	474037 M	ALBERO SLIP	SLIP SHAFT
2	474041 Z	ALBERO CONTRASTO SLIP	SLIP CONTRAST SHAFT
3	475478 D	GRUPPO FOTOCELLULA	PHOTOELECTRIC CELL ASSY
4	474170 B	BARRA CONTRASTO STAMPA	PRINT CONTRAST BAR
5	474169 E	RASCHIATORE TEGOLO SCRITTURA	PRINT PLATE SCRAPER
6	474190 Y	MOLLA PER TASTATORE (Npz = 2)	SPRING FOR SENSOR (Pcs = 2)
7	475394 Z	TASTATORE (Npz = 2)	SENSOR (Pcs = 2)
8	474072 Y	FERMA FLAT	FLAT BLOCKING
9	474070 A	BANDELLA DI TERRA	GROUND STRIP
10	474055 X	MOLLA A FILO	SPRING
11	474052 U	ALBERINO PER SUPPORTO ALLINEAMENTO	SHAFT FOR ALIGNMENT SUPPORT
12	474048 G	SUPPORTO RULLINO ALLINEAMENTO	ALIGNMENT ROLLER SUPPORT
13	475203 A	RULLINO CONTRASTO ALLINEATORE	ALIGNER CONTRAST ROLLER



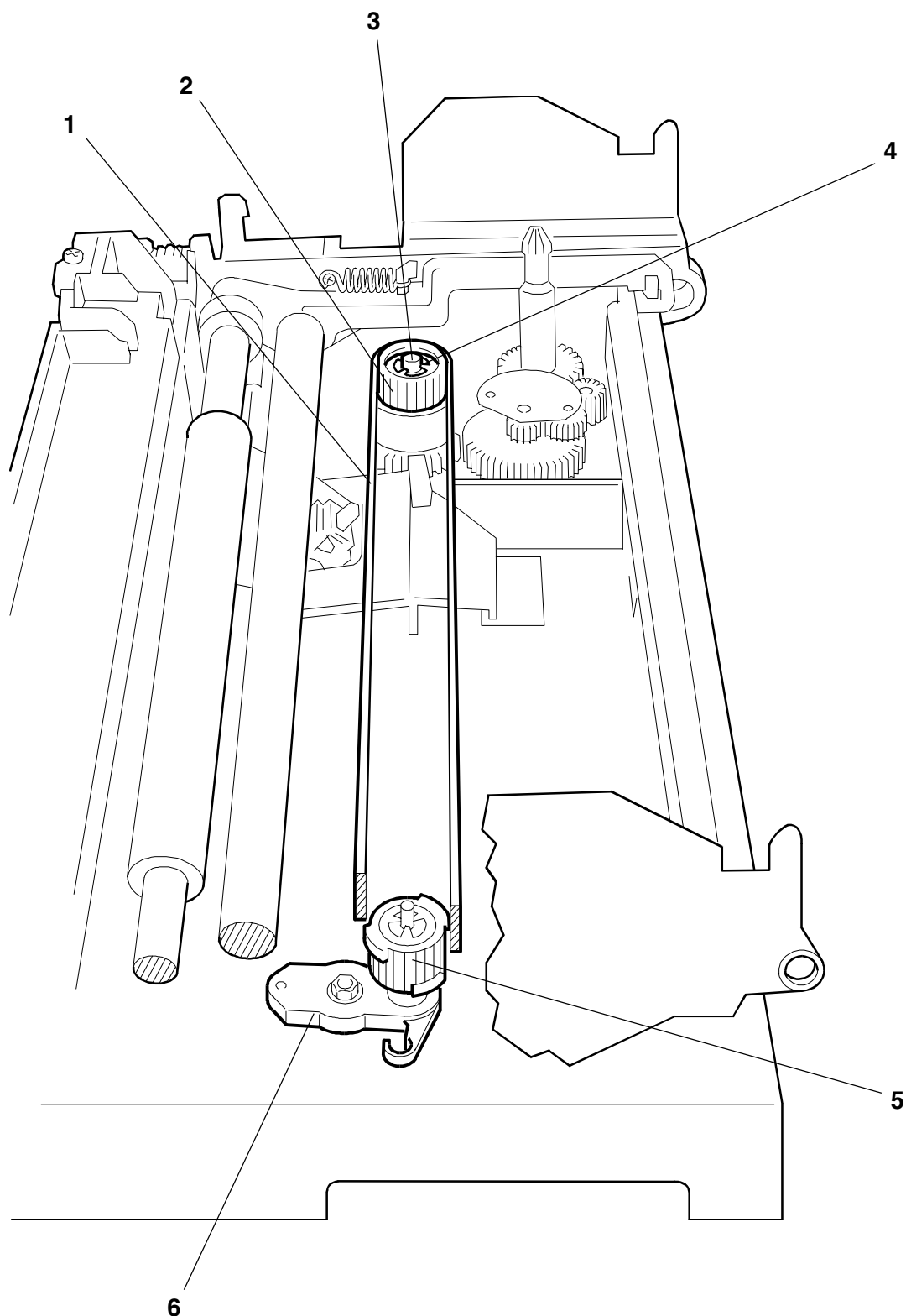
## GRUPPO STRUTTURA STAMPA 5 PRINTING SECTION 5 ASSEMBLY

PR4 SLIP

REF.	CODE	DESCRIZIONE	DESCRIPTION
1	474064 Y	ALBERO CARRELLO	CARRIAGE SHAFT
2	474243 G	FELTRINO CARRELLO	CARRIAGE PAD
3	475660 P	CARRELLO TRASPORTO TESTINA	HEAD MOVEMENT CARRIAGE
4	471939 X	GRUPPO TESTINA STAMPA	PRINT HEAD UNIT
5	474149 A	ARRESTO FLAT SU CARRELLO	BLOCKING FLAT FOR CARRIAGE
6	475196 K	LAMIERINO ANTIMACCHIA	ANTI-BLOT PLATE



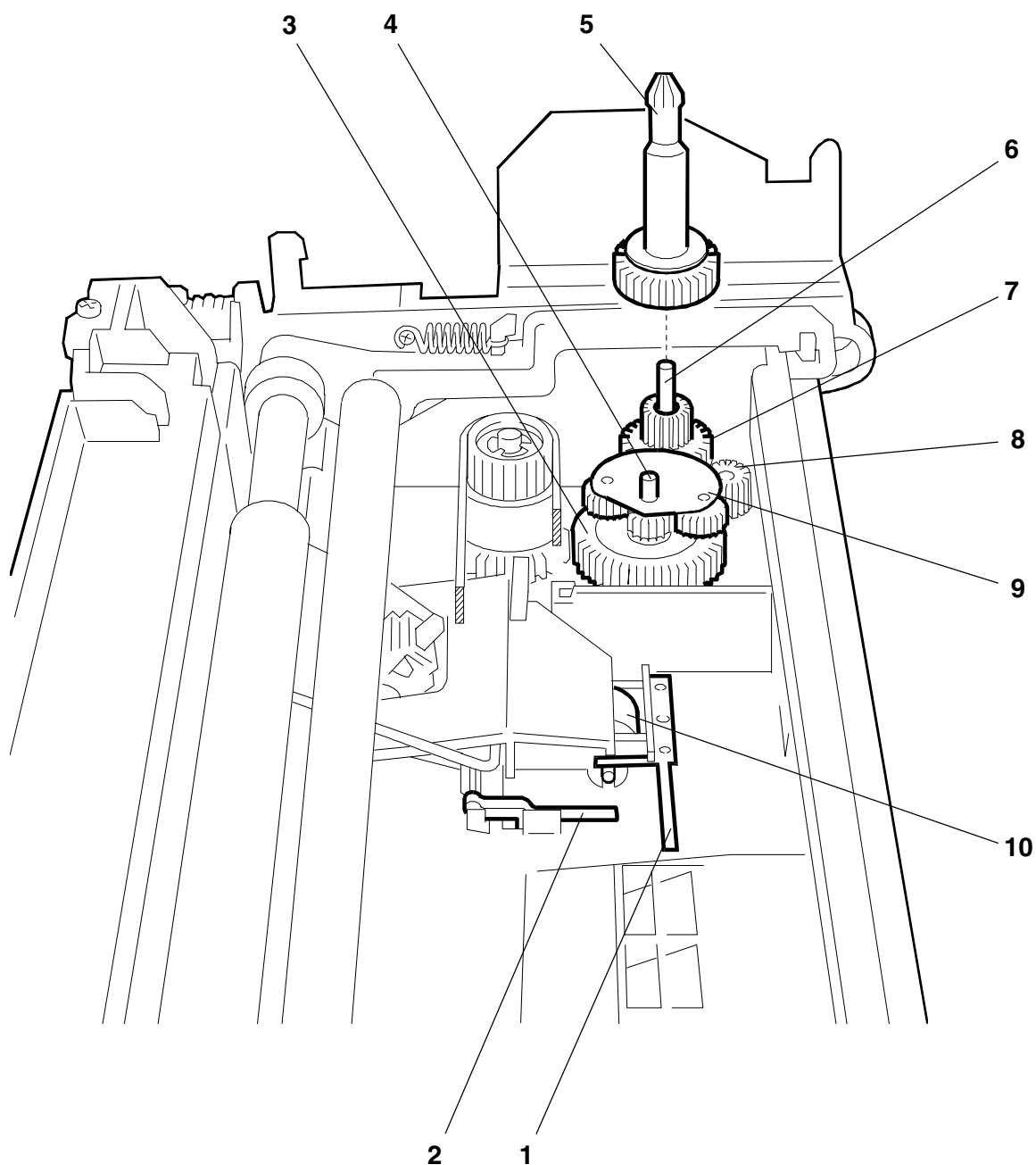
REF.	CODE	DESCRIZIONE	DESCRIPTION
1	474281 X	CINGHIA TRASPORTO CARRELLO	CARRIAGE MOVEMENT BELT
2	474259 Q	PULEGGIA CINGHIA CARRELLO	CARRIAGE BELT PULLEY
3	474025 R	PERNO PULEGGIA (Npz = 2)	PIN FOR PULLEY (Pcs = 2)
4	474241 E	RONDELLA ELASTICA Ø 2,3 (Npz = 2)	SPRING WASHER Ø 2.3 (Pcs = 2)
5	474067 T	PULEGGIA RINVIO CINGHIA	INTERMEDIATE PULLEY BELT
6	475479 E	STAFFA SUPPORTO PULEGGIA RINVIO	INTERMEDIATE PULLEY SUPPORT ROD



# GRUPPO STRUTTURA STAMPA 7 PRINTING SECTION 7 ASSEMBLY

PR4 SLIP

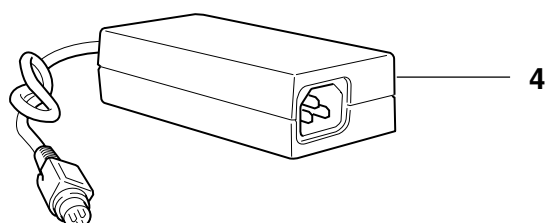
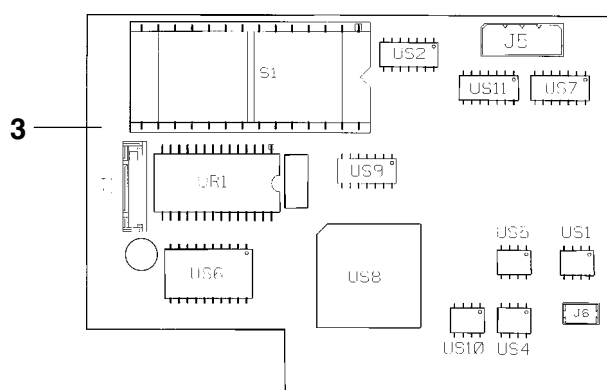
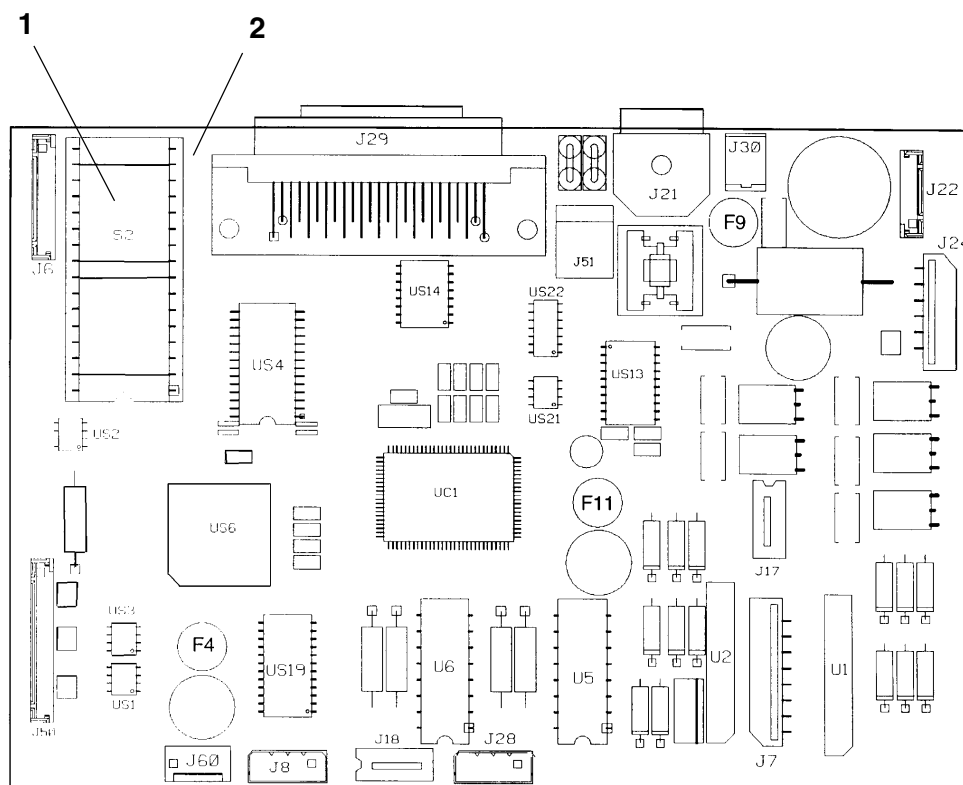
REF.	CODE	DESCRIZIONE	DESCRIPTION
1	474051 T	BALESTRA RULLINO ALLINEATORE	ALIGNMENT ROLLER LEAF SPRING
2	474053 V	ARRESTO DOCUMENTO	DOCUMENT CATCH
3	474062 W	RUOTA SCAMBIATORE	EXCHANGER GEAR
4	474023 P	PERNO PER SCAMBIATORE	PIN FOR EXCHANGER
5	474057 Z	LANCIA PER CARTUCCIA	REDUCER GEAR
6	949002 F	PERNO PER LANCIA	PIN FOR LANCE
7	474058 A	RUOTA RIDUTTORE	REDUCER GEAR
8	474061 V	RUOTA OZIOSA	IDLER GEAR
9	475408 G	GRUPPO SCAMBIATORE	EXCHANGER ASSEMBLY
10	475202 H	RULLINO ALLINEAMENTO	ALIGNMENT ROLLER



## COMPONENTI ELETTRICI ELECTRICALS COMPONENTS

PR4 SLIP

REF.	CODE	DESCRIZIONE	DESCRIPTION
1	242364 Q	FLASH EPROM INIZIALIZZATA	INITIALIZED FLASH EPROM
2	475770 M	PIASTRA BASE	MAIN BOARD
3	474317 S	PIASTRA MICR	MICR BOARD
4	474014 N	ALIMENTATORE	POWER SUPPLY



# **INDICE GENERALE DEI CODICI GENERAL CODES INDEX**

# **INDICE GENERALE DEI CODICI** **GENERAL CODES INDEX**

**PR4 SLIP**

CODICE CODE	PAGINA PAGE	CODICE CODE	PAGINA PAGE	CODICE CODE	PAGINA PAGE
242364Q	12	475408G	11		
470925U	4	475478D	8		
471939X	9	475479E	10		
474014N	12	475534M	3		
474015P	5	475535N	4		
474020Y	6	475536P	3		
474021M	5	475538Z	3		
474023P	11	475660P	9		
474025R	10	475662D	3		
474027K	7	475675A	5		
474028U	7	475677C	6		
474031P	5	475685W	3		
474037M	8	475770M	12		
474039X	7	722149A	5		
474040C	6	949002F	11		
474041Z	8				
474042S	6				
474045V	6				
474048G	8				
474051T	11				
474052U	8				
474053V	11				
474055X	8				
474057Z	11				
474058A	11				
474061V	11				
474062W	11				
474064Y	9				
474067T	10				
474070A	8				
474071X	6				
474072Y	8				
474075T	6				
474076U	7				
474077V	7				
474079F	5				
474149A	9				
474169E	8				
474170B	8				
474190Y	8				
474241E	10				
474243G	9				
474259Q	10				
474281X	10				
474317S	12				
474333S	4				
474421K	5				
474423M	4				
474424N	3				
474427R	3				
474429T	4				
474430Y	4				
474443Z	3				
474698H	3				
475196K	9				
475201G	6				
475202H	11				
475203A	8				
475394Z	8				



## STATO DI AGGIORNAMENTO UPDATING STATUS

[illegible]