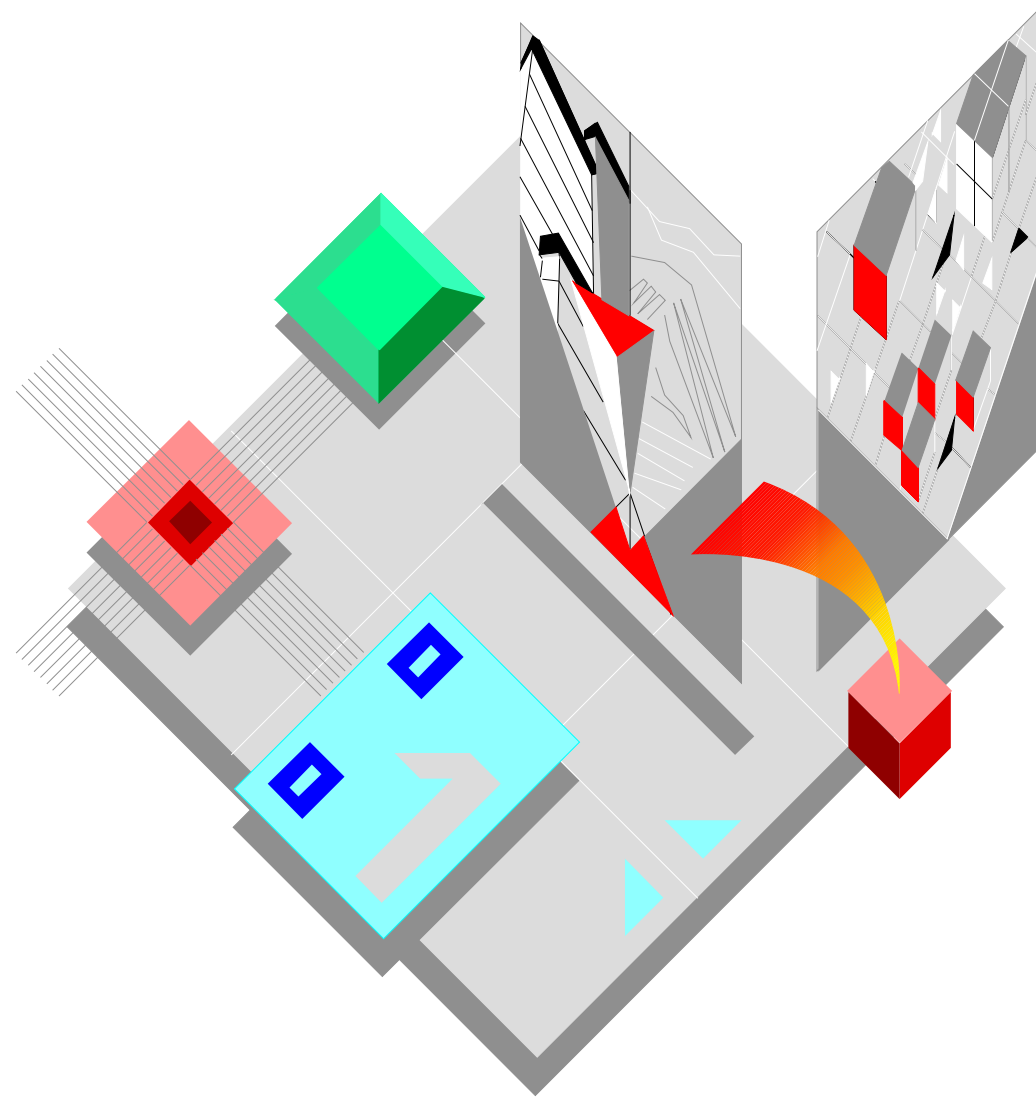


Field Engineering Library



JP 370

**CATALOGO PARTI DI RICAMBIO
SPARE PARTS CATALOGUE**

Copyright © 1996 Olivetti Lexikon S.p.A.

olivetti

Stampante - Printer

JP 370

CATALOGO PARTI DI RICAMBIO
SPARE PARTS CATALOGUE

Code 2720920V-00

IMPORTANTE

PUBBLICAZIONE REDATTA DA OLIVETTI LEXIKON (GESTIONE RICAMBI E SCORTE).
QUESTO CATALOGO È L'UNICO DOCUMENTO AL QUALE FARE RIFERIMENTO PER
ORDINARE LE PARTI DI RICAMBIO.

PER EVENTUALI INFORMAZIONI RIVOLGERSI AL NUMERO:

FAX: +39.125.524025

IMPORTANT

THIS PUBLICATION IS WRITTEN BY OLIVETTI LEXIKON (SPARE PARTS DEPARTMENT).
THIS CATALOGUE IS THE ONLY DOCUMENT TO WHICH REFERENCE MAY BE MADE
FOR ORDERING SPARE PARTS.

REQUESTS FOR ADDITIONAL INFORMATION SHOULD BE FAXED TO THE FOLLOWING
NUMBER:

FAX: +39.125.524025.

JP 370

INDICE

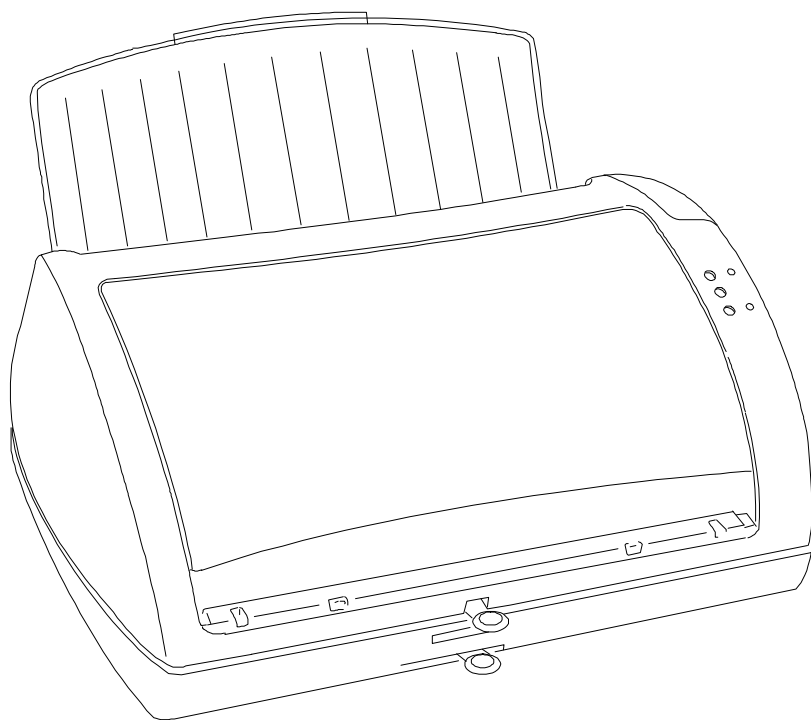
JP 370

COMPLESSIVO	Pag.	3
GRUPPO CARROZZERIA	"	4-5
GRUPPO CARRELLO E STAMPA	"	6-7
GRUPPO TRASCINAMENTO CARTA E ALI (1/2)	"	8-9
GRUPPO TRASCINAMENTO CARTA E ALI (2/2)	"	10-11
GRUPPO ASF (1/2)	"	12
GRUPPO ASF (2/2)	"	13
PIASTRA BASE	"	14
CAVI	"	15
INDICE GENERALE DEI CODICI	"	16

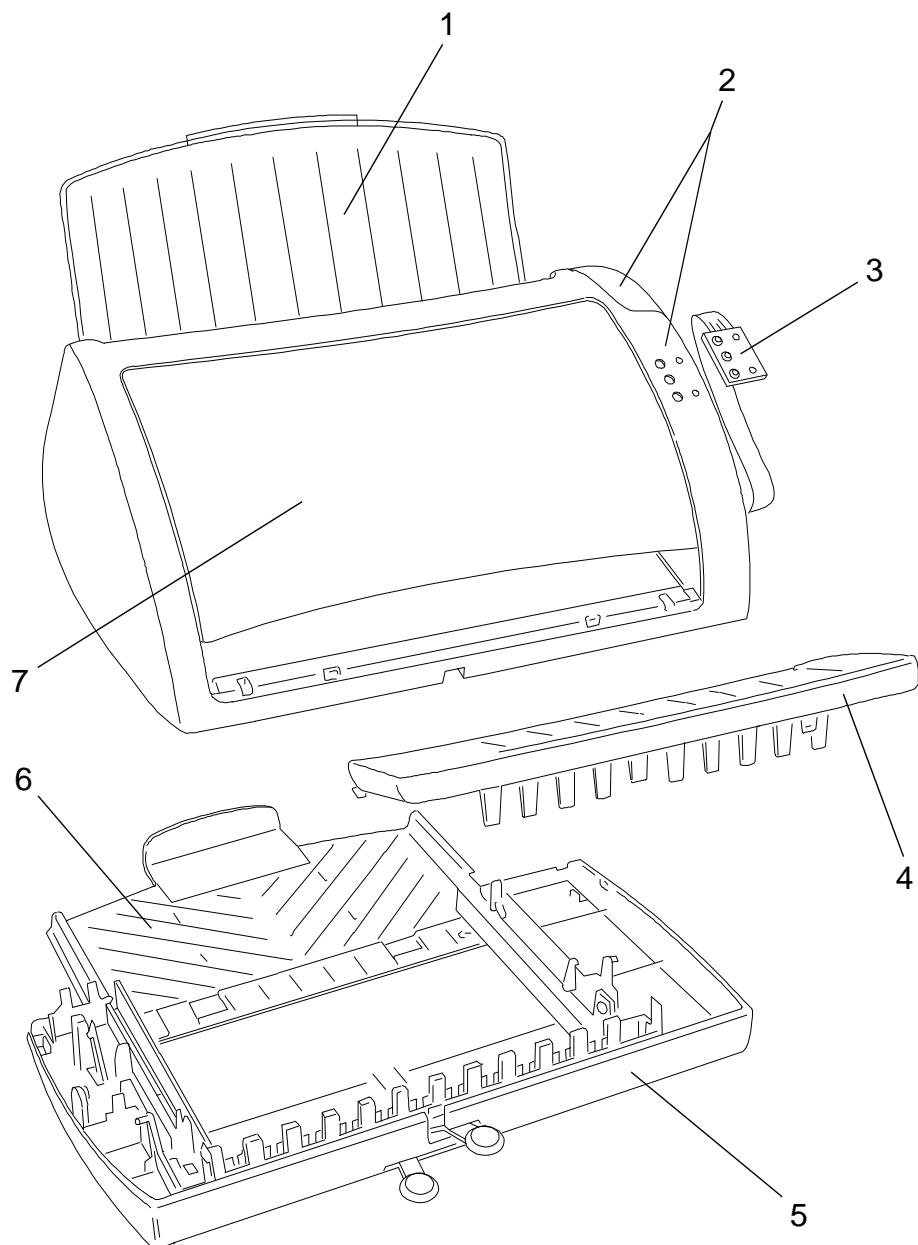
INDEX

JP 370

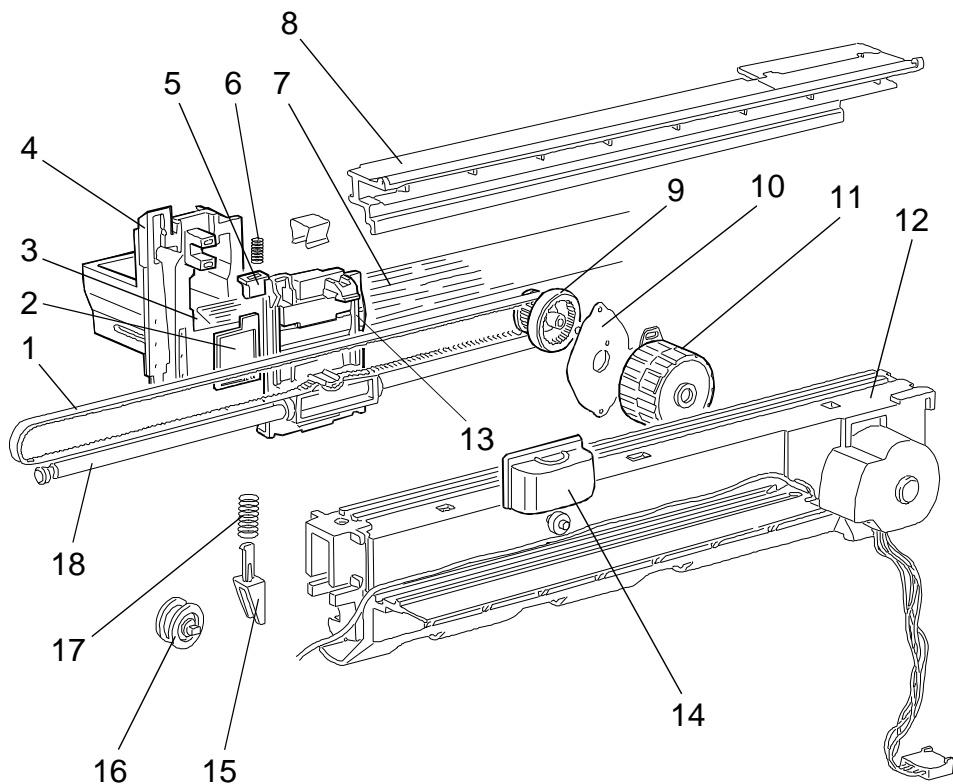
ASSEMBLY	Page	3
CASING ASSEMBLY	"	4-5
PRINT AND CARRIAGE ASSEMBLY	"	6-7
POWER SUPPLY AND PAPER FEED ASSEMBLY (1/2)	"	8-9
POWER SUPPLY AND PAPER FEED ASSEMBLY (2/2)	"	10-11
ASF ASSEMBLY (1/2)	"	12
ASF ASSEMBLY (2/2)	"	13
BASIC BOARD	"	14
CABLES	"	15
GENERAL CODES INDEX	"	16



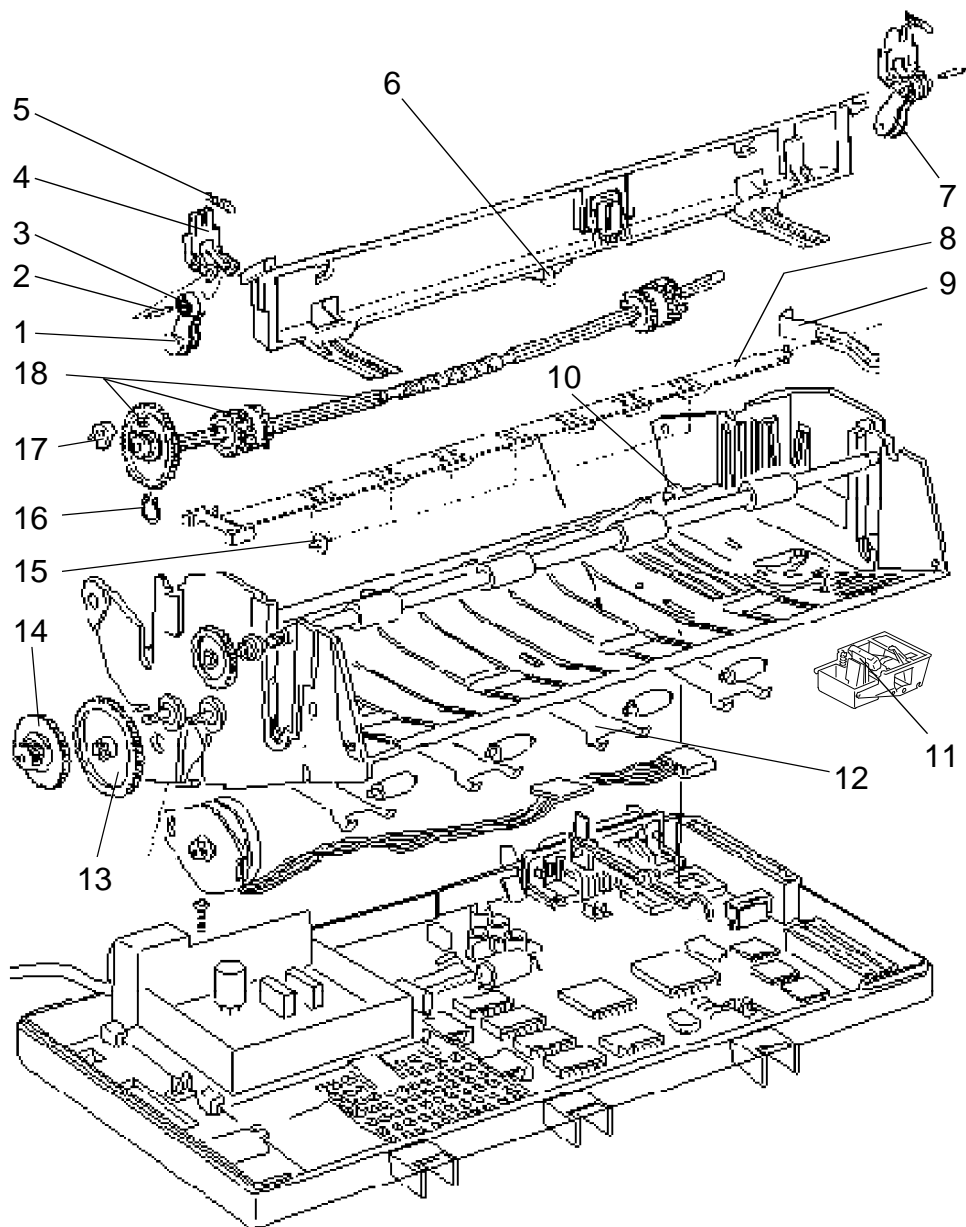
REF.	CODE	DESCRIZIONE	DESCRIPTION
1	201123 X	GR.REGGICARTA SUPERIORE	UPPER PAPER SUPPORT GR.
2	582865 M	GRUPPO SCOCCA CON COPERCHIO MEMORIA	CASING ASSEMBLY WITH MEMORY COVER
3	789526 Y	CONSOLE	CONSOLE
4	582848 U	INTRODUTTORE MANUALE	MANUAL SHEET FEED
5	582857 M	GR.FONDELLO ASF COMPLETO	ASF BASE GROUP
6	582889 N	GR.PORTA CARTA INFERIORE	LOWER PAPER SUPPORT GR.
7	582868 Y	GR.COPERCHIO	COVER ASSEMBLY



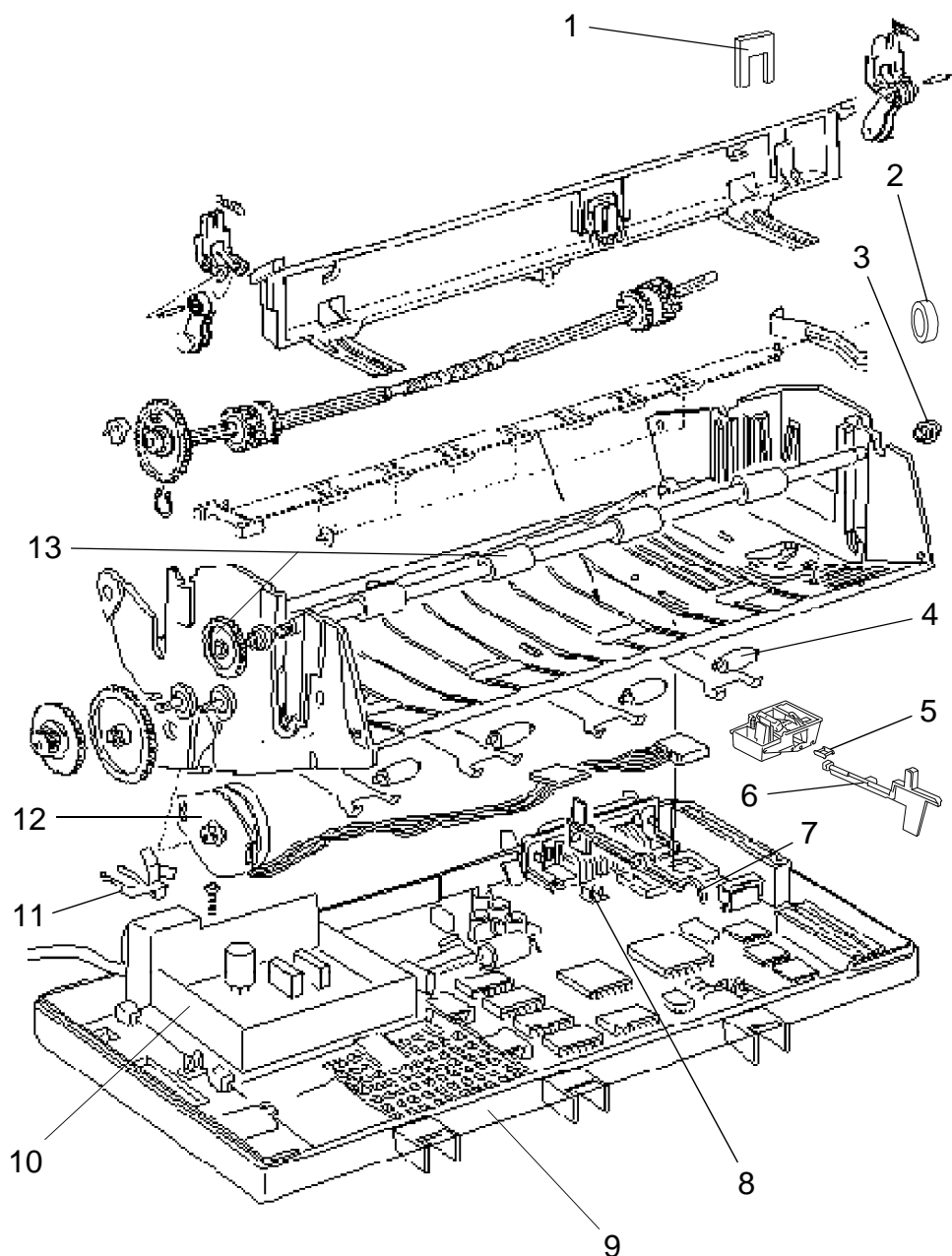
REF.	CODE	DESCRIZIONE	DESCRIPTION
1	789724 E	CINGHIA DENTATA	TOOTH BELT
2	789365 N	GOMMINO CONTR. FLAT TSP	TSP FLAT CONTRAST RUBBER
3	789269 W	GRUPPO CAVO TESTINA	HEAD CABLE ASSEMBLY
4	789488 B	COPERCHIO CARRELLO	CARRIAGE COVER
5	789216 H	LEVA FERMA TESTINA	HEAD STOP LEVER
6	789722 C	MOLLA FERMA TESTINA	HEAD STOP SPRING
7	789272 R	FLAT TESTINA	HEAD FLAT
8	582867 P	GRUPPO SET UP	SET UP ASSEMBLY
9	789711 H	INGRANAGGIO RIDUTTORE	REDUCTION GEAR
10	789710 L	FLANGIA	FLANGE
11	789427 V	MOTORE	MOTOR
12	582917 H	TRAVERSA CARRELLO	CARRIAGE BAR
13	789305 K	CORPO CARRELLO	CARRIAGE FRAME
14	583487 C	CURSORE POMPA	PUMP SLIDER
15	789732 E	CUNEO PER TENDICINGHIA	BELT TENSION U-BOLT
16	789736 A	PULEGGIA TENDICINGHIA	BELT TENSION PULLEY
17	789734 G	MOLLA	SPRING
18	789723 D	ALBERO CARRELLO	CARRIAGE SHAFT



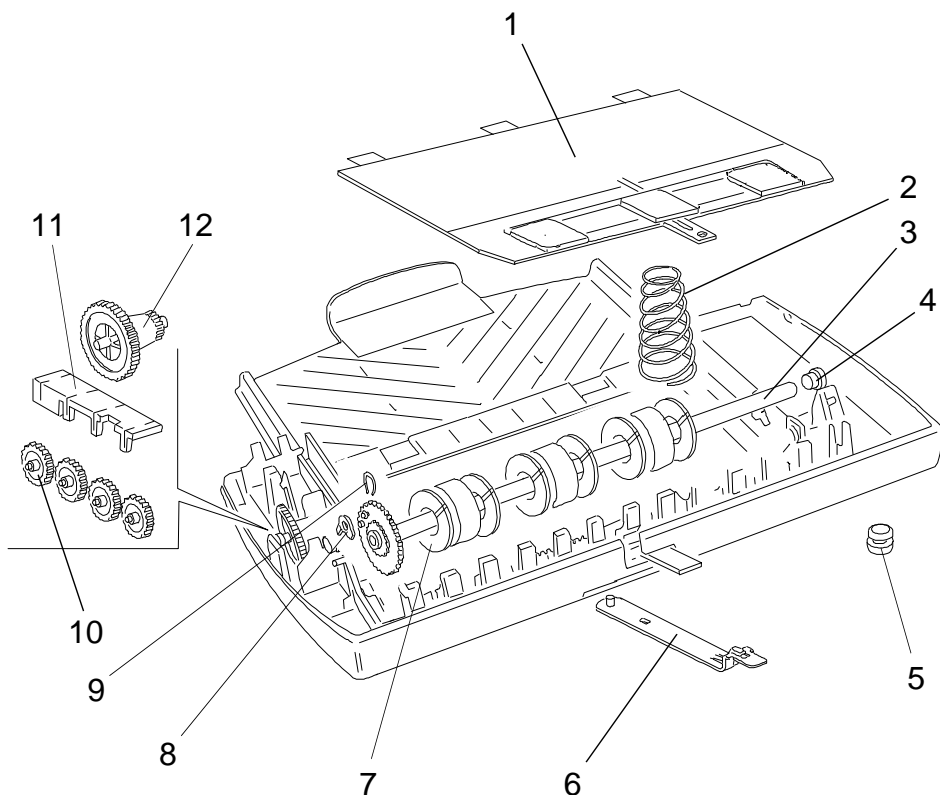
REF.	CODE	DESCRIZIONE	DESCRIPTION
	582859 X	GRUPPO STRUTTURA	FRAME ASSEMBLY
1	789589 G	GRUPPO MENISCO SINISTRO	LEFT TOGGLE LEVER ASSY
2	789758 Y	ALBERO PER COLTELLO	CUTTER SHAFT
3	789757 P	RULLINO CONICO	CONICAL ROLLER
4	789761 K	FORCHETTA	BRACKET
5	789762 L	MOLLA PER FORCHETTA	SPRING FOR BRACKET
6	789698 M	RUOTA A PICCHI	TOOTHED WHEEL
7	789590 D	GRUPPO MENISCO DESTRO	RIGHT TOGGLE LEVER ASSY
8	789760 W	SUPP. RUOTE ANTIMACCHIA	ANTI-SMUDGE WHEEL ASSY
9	789763 M	MOLLA FISSAGGIO ANTIMACC.	ANTI-SMUDGE BAR SPRING
10	789702 R	SUPPORTO ALBERO USCITA	EXIT SHAFT SUPPORT
11	789311 G	GRUPPO PATTINO COLORE	COLOR GUIDE SHOE GROUP
12	789703 J	BALESTRA SUPP. RULLINI	ROLLERS SUPP. LEAF SPRING
13	789750 U	INGRANAGGIO INTERMEDIO	INTERMEDIATE GEAR
14	789751 R	INGRANAGGIO INTERMEDIO PIÙ PIGNONE	INTERMEDIATE GEAR PLUS PINION
15	789759 Z	RUOTA ANTIMACCHIA	ANTI-SMUDGE WHEEL
16	789808 L	MOLLA ELASTICA	ELASTIC SPRING
17	789807 B	DENTE DI INNESTO	TOOTH CLUTCH
18	789738 L	GRUPPO ALBERO USCITA	EXIT SHAFT ASSEMBLY



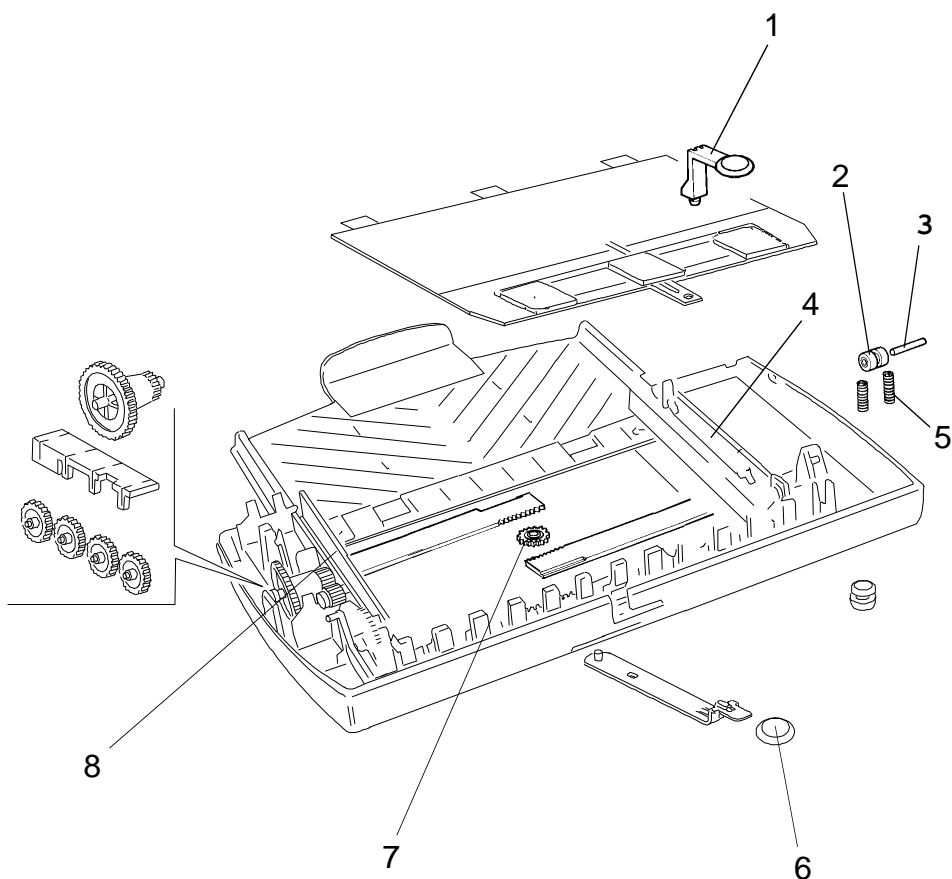
REF.	CODE	DESCRIZIONE	DESCRIPTION
1	789250 X	ARRESTO TESTINA	HEAD BLOCKING
2	789854 H	MOLLA E FERRITE PER CAVO FLAT	FERRITE AND SPRING FOR FLAT CABLE
3	789749 X	BOCCOLA ALBERO RULLINI	ROLLERS SHAFT BUSHING
4	789752 J	RULLINO PREMICAARTA	PAPER PRESSURE ROLLER
5	789340 Z	BIELLA	CONNECTING ROD
6	789335 G	LEVA COMANDO	COMMAND LEVER
7	789753 K	LEVA PRESENZA CARTA	PAPER PRESENCE LEVER
8	789785 C	APPOGGIO	SUPPORT
9	582858 W	GRUPPO FONDELLO	BASE ASSEMBLY
10	582886 B	GR. ALIMENTATORE 115V	POWER SUPPLY ASSY 115V
	582887 C	GR. ALIMENTATORE 220V	POWER SUPPLY ASSY 220V
11	789729 K	MOLLA SCHERMO	PROTECTION SPRING
12	789428 E	MOTORE TRASCINAM. CARTA	PAPER FEED MOTOR
13	789746 L	GRUPPO ALBERO INGRESSO	ENTRY SHAFT ASSEMBLY



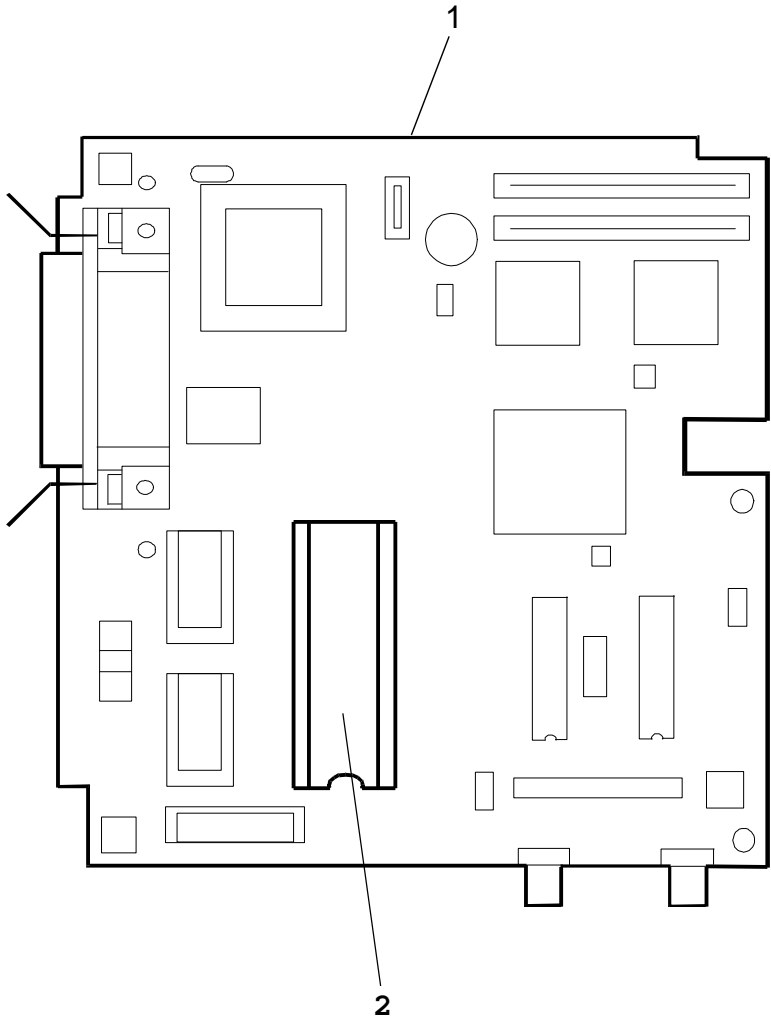
REF.	CODE	DESCRIZIONE	DESCRIPTION
	582857 M	GRUPPO FONDELLO ASF	ASF BASE ASSEMBLY
1	789830 D	GR. LAMIERA PREMICAARTA	PAPER PRESSURE PLATE ASSY
2	789819 E	MOLLA PREMICAARTA	PAPER PRESSURE SPRING
3	789025 V	GR. ALBERO DI INGRESSO	ENTRY SHAFT ASSEMBLY
4	789840 P	BOCCOLA	BUSHING
5	789673 K	PIEDINO	FOOT
6	789525 X	GRUPPO LEVA COMANDO	COMMAND LEVER ASSEMBLY
7	789841 C	RONDELLA SCARICO ASF	ASF DISCHARGED WASHER
8	789807 B	DENTE DI INNESTO	CLUTCH TOOTH
9	789808 L	MOLLA ELASTICA	ELASTIC SPRING
10	789805 H	INGRANAGGIO	GEAR
11	789839 A	COPERCHIO INGRANAG. ASF	ASF GEAR COVER
12	789835 W	RIDUTTORE	REDUCTION GEAR



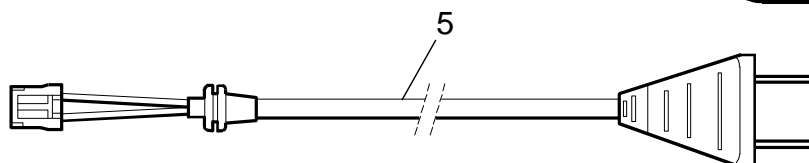
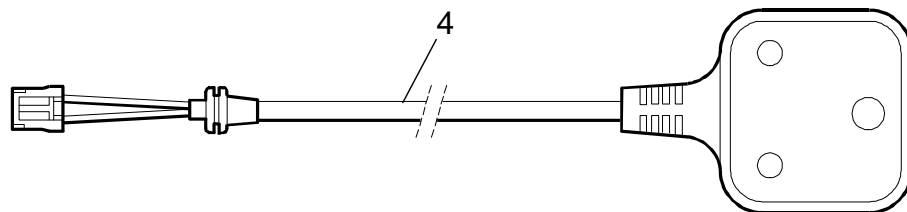
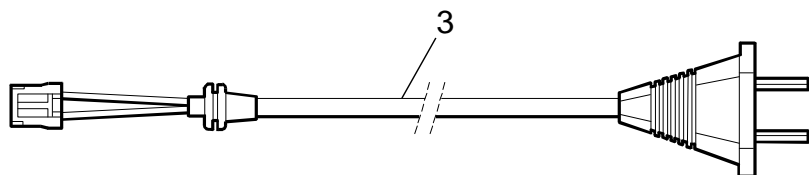
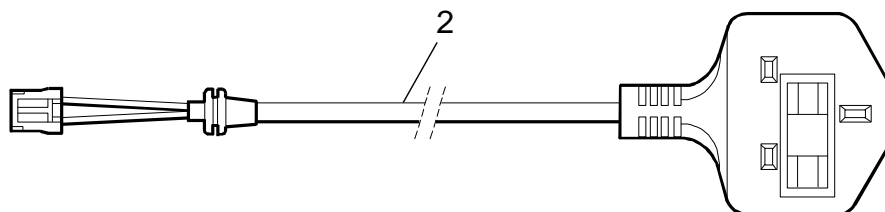
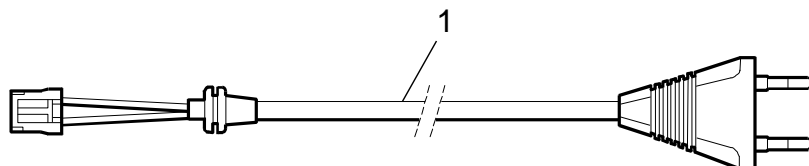
REF.	CODE	DESCRIZIONE	DESCRIPTION
	582857 M	GRUPPO FONDELLO ASF	ASF BASE ASSEMBLY
1	789522 U	LEVA COMANDO LAMIERA	PLATE COMMAND LEVER
2	789797 G	CONTRASTO RULLINI	ROLLER CONTRAST
3	789798 R	ALBERO CONTRASTO RULLINI	ROLLER CONTRAST SHAFT
4	789517 X	CORSOIO DESTRO	RIGHT GUIDE
5	789799 J	MOLLA	SPRING
6	789523 V	CAPPUCCIO	CAP
7	789676 N	INGRANAGGIO	GEAR
8	789516 W	CORSOIO SINISTRO	LEFT GUIDE



REF.	CODE	DESCRIZIONE	DESCRIPTION
1	612745 H	PIASTRA BASE - JP 370 SENZA FW	BASIC BOARD - JP 370 WITHOUT FW
2	4873387 A	EPROM REL. 100A	EPROM REL. 100A



REF.	CODE	DESCRIZIONE	DESCRIPTION
1	203175 D	COR05 - CAVO RETE EUROPA	COR05 - MAINS CABLE EUROPE
2	203176 E	COR042 - CAVO RETE U.K.	COR042 - MAINS CABLE U.K.
3	203177 F	COR043 - CAVO RETE AUSTRALIA	COR043 - MAINS CABLE AUSTRALIA
4	203178 Q	COR080 - CAVO RETE SUD AFRICA	COR080 - MAINS CABLE SOUTH AFRICA
5	203179 R	COR050 - CAVO RETE U.S.A.	COR050 - MAINS CABLE U.S.A.



INDICE GENERALE DEI CODICI - GENERAL CODES INDEX

CODICE CODE	PAGINA PAGE	CODICE CODE	PAGINA PAGE	CODICE CODE	PAGINA PAGE
413617J	12	581198Q	4	789333E	10
501047T	6	581288S	7	789732E	11
581022A	7	581298U	8		
581023B	7	581298U	11		
581024C	7	581749F	6		
581029R	6	581809V	9		
581032C	8	582119R	11		
581039K	6	582133F	7		
581039K	7	582137B	6		
581040Y	7	582139M	8		
581043P	7	582380T	6		
581043P	8	582382R	6		
581045R	6	582382R	7		
581049V	9	582383J	6		
581050S	9	582402N	4		
581050S	11	582519J	11		
581052Q	9	582521C	4		
581053R	11	582525G	13		
581055K	11	582527A	13		
581056L	8	582533G	11		
581056L	11	582571N	4		
581057M	8	582574R	6		
581058W	8	582575J	10		
581058W	11	582576K	10		
581064L	11	582578V	10		
581066N	9	582579W	10		
581086B	4	582581H	11		
581092H	7	582582A	11		
581093A	7	582583B	10		
581094B	7	582585D	10		
581095C	7	582586E	10		
581096D	7	582588Q	10		
581097E	7	582593D	4		
581102Q	7	582743S	4		
581120M	5	582743S	5		
581140Z	12	582751S	6		
581142P	8	582751S	8		
581145J	8	582767S	7		
581188N	7	789216H	11		



STATODIAGGIORNAMENTO

UPDATING STATUS

[illegible]