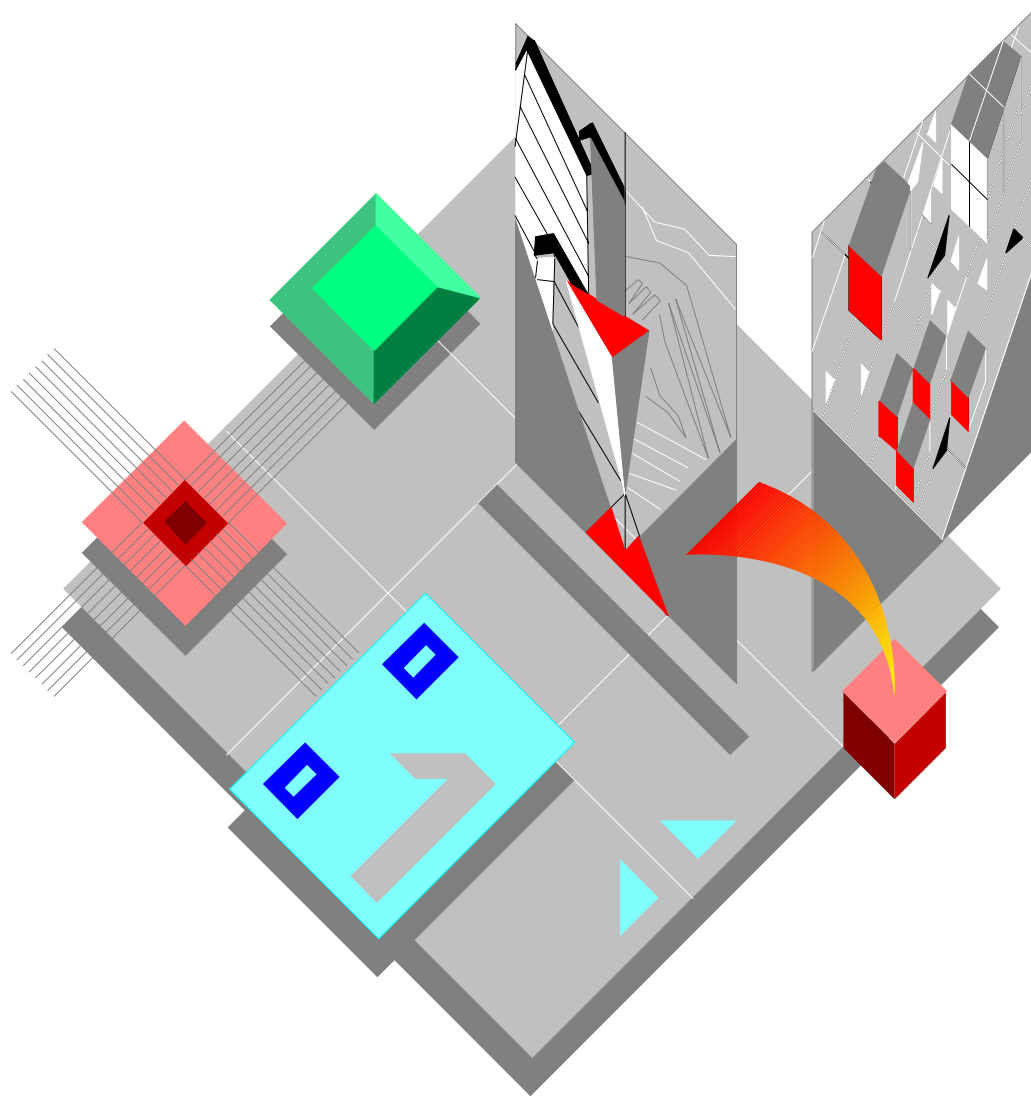


Field Engineering Library



PR 4 / PR 4 SR

**CATALOGO PARTI DI RICAMBIO
SPARE PARTS CATALOGUE**

Copyright © 1998 Olivetti Lexikon S.p.A.

olivetti

Stampante - Printer

PR 4 / PR 4 SR

CATALOGO PARTI DI RICAMBIO
SPARE PARTS CATALOGUE

Code 681821L-01

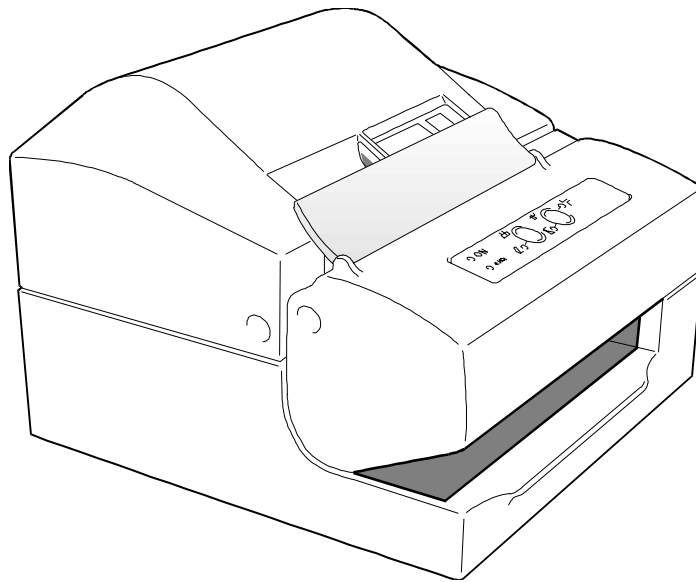
IMPORTANTE

PUBBLICAZIONE REDATTA DA OLIVETTI LEXIKON (GESTIONE RICAMBI E SCORTE).
QUESTO CATALOGO È L' UNICO DOCUMENTO AL QUALE FARE RIFERIMENTO PER
ORDINARE LE PARTI DI RICAMBIO.

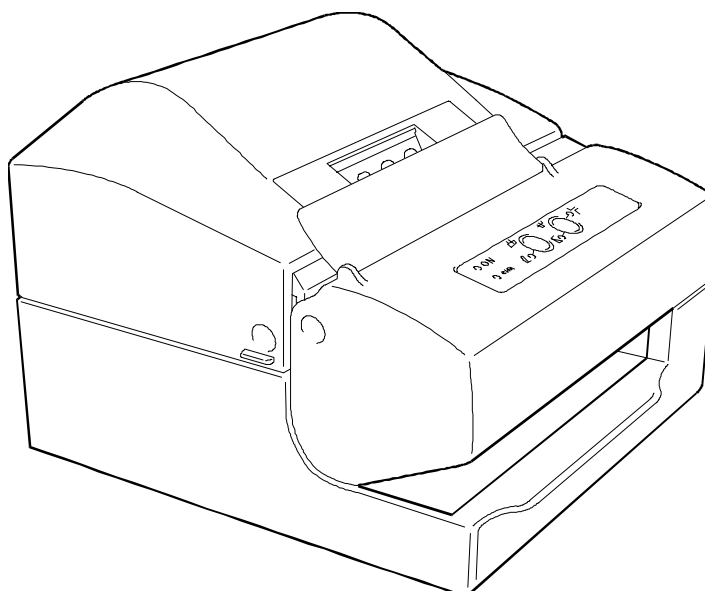
IMPORTANT

THIS PUBLICATION IS WRITTEN BY OLIVETTI LEXIKON (SPARE PARTS DEPARTMENT).
THIS CATALOGUE IS THE ONLY DOCUMENT TO WHICH REFERENCE MAY BE MADE
FOR ORDERING SPARE PARTS.

PR 4



PR 4 SR



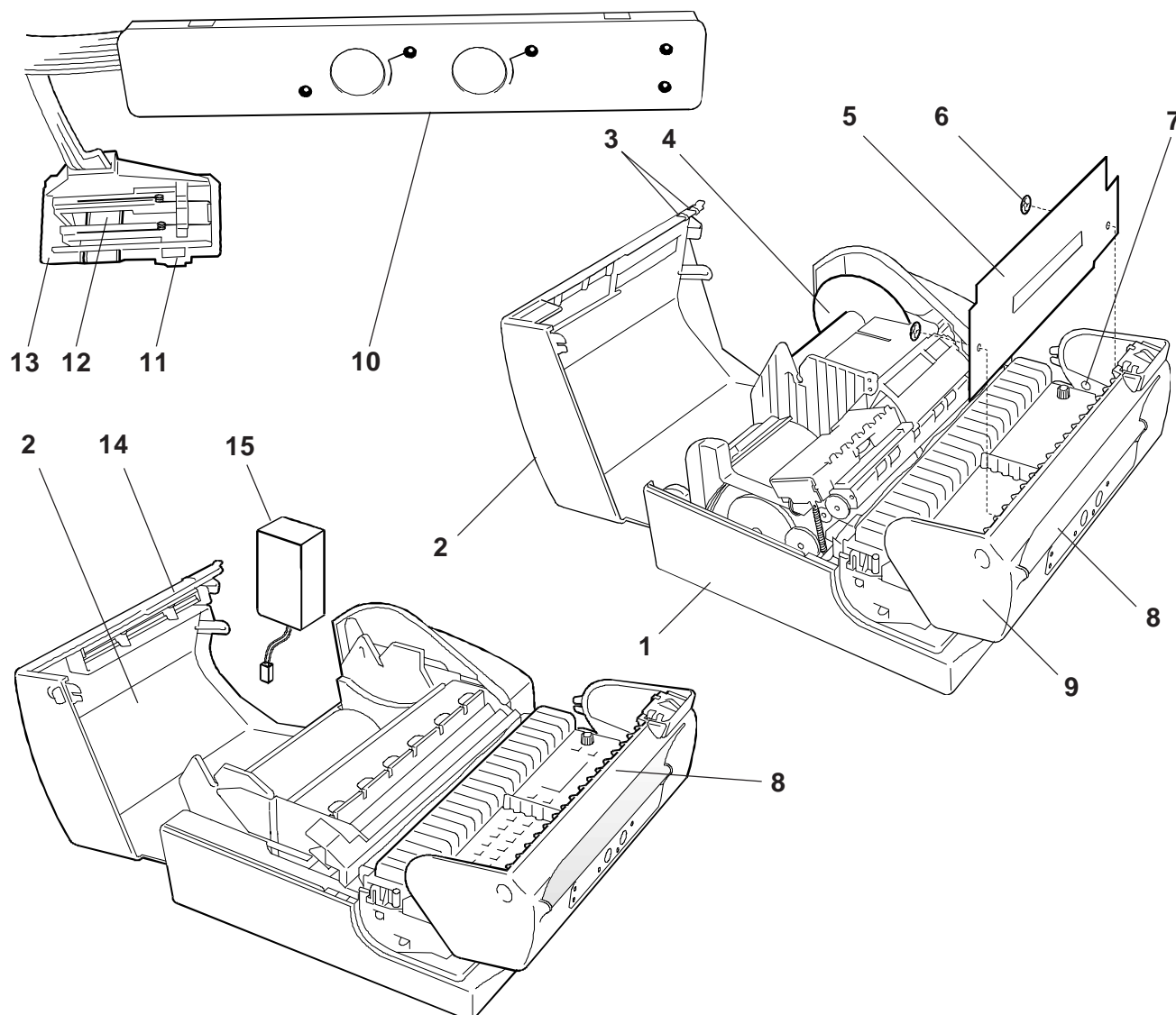
INDICE

GRUPPO CARROZZERIA	Pag. 3
GRUPPO FONDELLO	" 4
GRUPPO STRUTTURA STAMPA 1	" 5
GRUPPO STRUTTURA STAMPA 2	" 6
GRUPPO STRUTTURA STAMPA 3	" 7
GRUPPO STRUTTURA STAMPA 4	" 8
GRUPPO STRUTTURA STAMPA 5	" 9
GRUPPO STRUTTURA STAMPA 6	" 10
GRUPPO STRUTTURA STAMPA 7	" 11
GRUPPO TRATTAMENTO CARTA 1	" 12
GRUPPO TRATTAMENTO CARTA 2 (PR4)	" 13
GRUPPO TRATTAMENTO CARTA 2 (PR4 SR)	" 14
GRUPPO TRATTAMENTO CARTA 3 (PR4)	" 15
GRUPPO TRATTAMENTO CARTA 3 (PR4 SR)	" 16
GRUPPO TRATTAMENTO CARTA 4	" 17
PIASTRE ELETTRONICHE	" 18
MINUTERIA	" 19
INDICE GENERALE DEI CODICI	Pag. 21

INDEX

CASING ASSEMBLY	Pag. 3
BASE UNIT	" 4
PRINTING SECTION 1 ASSEMBLY	" 5
PRINTING SECTION 2 ASSEMBLY	" 6
PRINTING SECTION 3 ASSEMBLY	" 7
PRINTING SECTION 4 ASSEMBLY	" 8
PRINTING SECTION 5 ASSEMBLY	" 9
PRINTING SECTION 6 ASSEMBLY	" 10
PRINTING SECTION 7 ASSEMBLY	" 11
PAPER FEEDING 1 ASSEMBLY	" 12
PAPER FEEDING 2 ASSEMBLY (PR4)	" 13
PAPER FEEDING 2 ASSEMBLY (PR4 SR)	" 14
PAPER FEEDING 3 ASSEMBLY (PR4)	" 15
PAPER FEEDING 3 ASSEMBLY (PR4 SR)	" 16
PAPER FEEDING 4 ASSEMBLY	" 17
ELECTRONIC BOARD	" 18
DETAILS	" 19
GENERAL INDEX	Pag. 21

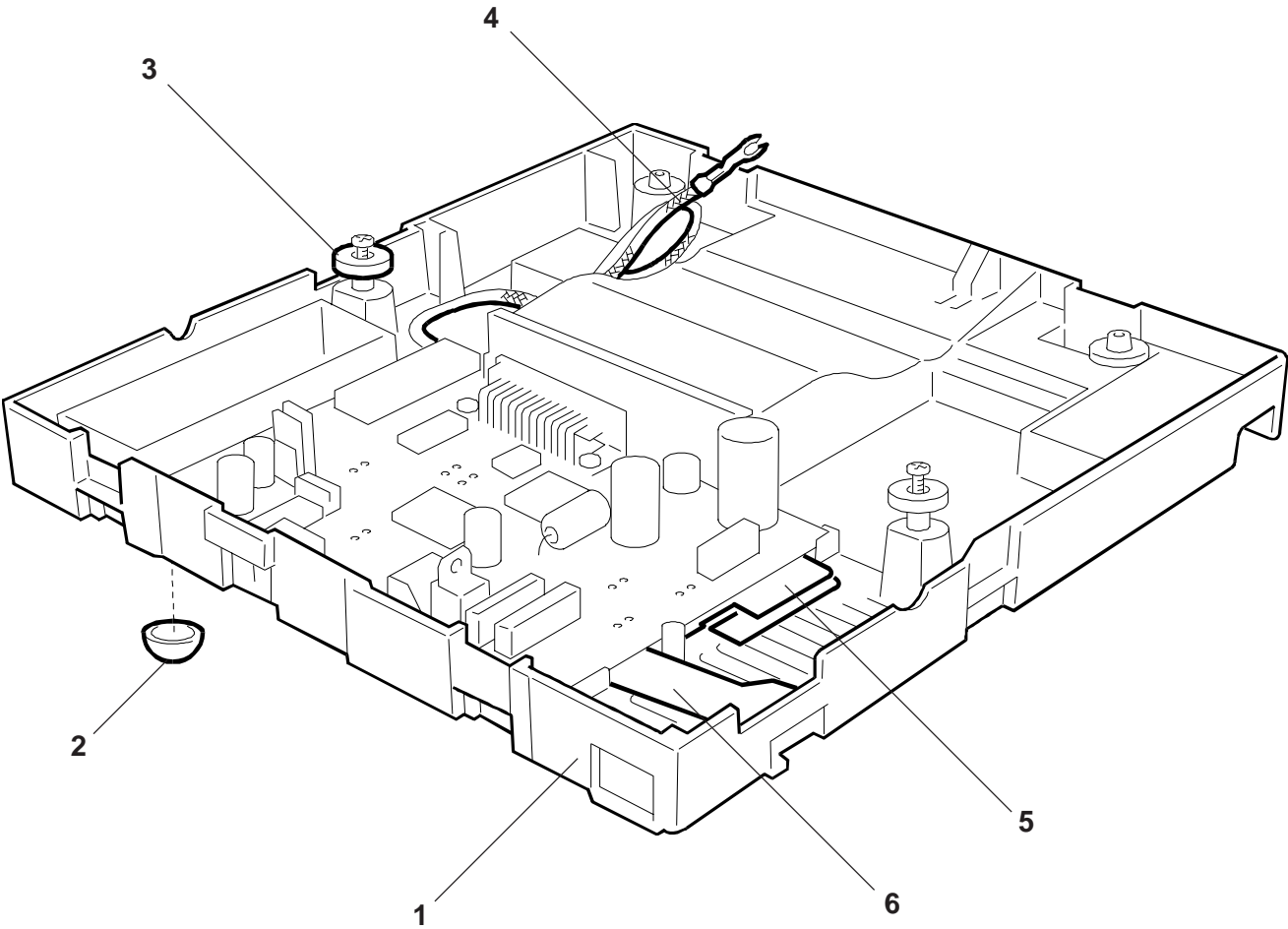
REF.	CODE	DESCRIZIONE	DESCRIPTION
1	474419 Z	GRUPPO SCOCCA	CASING ASSEMBLY
2	474425 P 474688 F	COPERTURA POSTERIORE (PR4) COPERTURA POSTERIORE (PR4 SR)	REAR COVER (PR4) REAR COVER FOR LONG ROLL (PR4 SR)
3	474446 U	ARRESTO DOCUMENTO VERTICALE	VERTICAL DOCUMENT CATCH
4	474115 Q	ROTOLO RIAVVOLGITORE	REWINDER ROLL
5	474442 Y	FONOASSORBENTE PER COPERTURA ANT.	FRONT COVER DEADENING
6	474474 Y	RONDELLA BLOCCAGG. FONOASSORBENTE	DEADENING BLOCKING PLAIN WASHER
7	474424 N	GOMMINO SUPPORTO COPERTURA ANTER.	FRONT COVER SUPPORT RUBBER
8	474443 Z	VETRINO PER COPERTURA ANTERIORE	FRONT COVER GLASS
9	474422 L	COPERTURA ANTERIORE	FRONT COVER
10	474426 Q 474701 C	GRUPPO CONSOLE (PR4) GRUPPO CONSOLE (PR4 SR)	CONSOLE ASSEMBLY (PR4) CONSOLE ASSEMBLY (PR4 SR)
11	474427 R	SUPPORTO MICRO	MICRO SWITCH SUPPORT
12	474428 S	MOLLA SUPPORTO MICRO	MICRO SWITCH SUPPORT SPRING
13	474441 X	CONTRASTO MYLAR CONSOLE	CONSOLE MYLAR CONTRAST
14	474691 S	TAGLIERINA (PR4 SR)	CUTTER (PR4 SR)
15	474014 N	ALIMENTATORE INTERNO	INTERNAL POWER



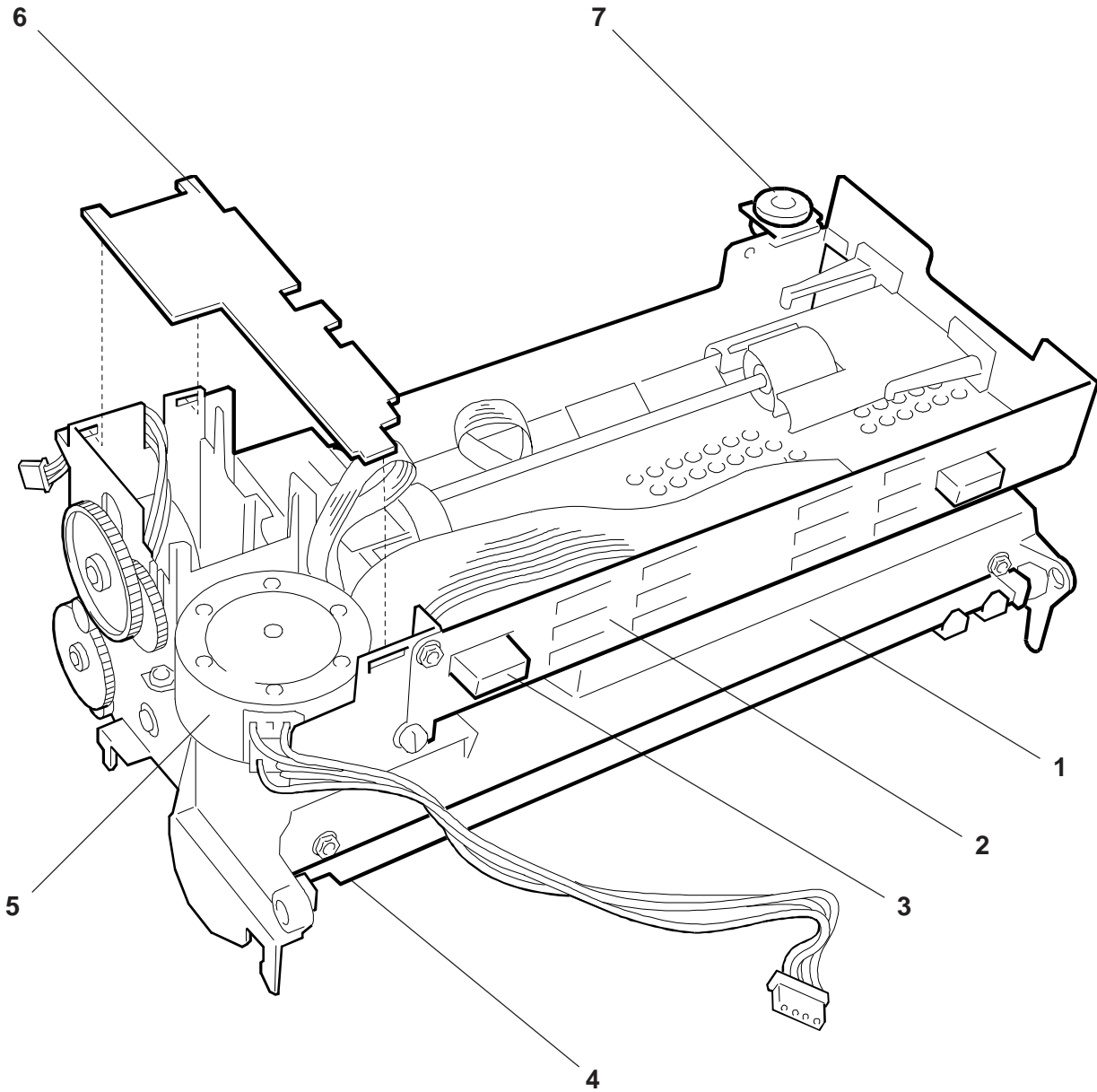
GRUPPO FONDELLO
BASE UNIT

PR4 / PR4 SR

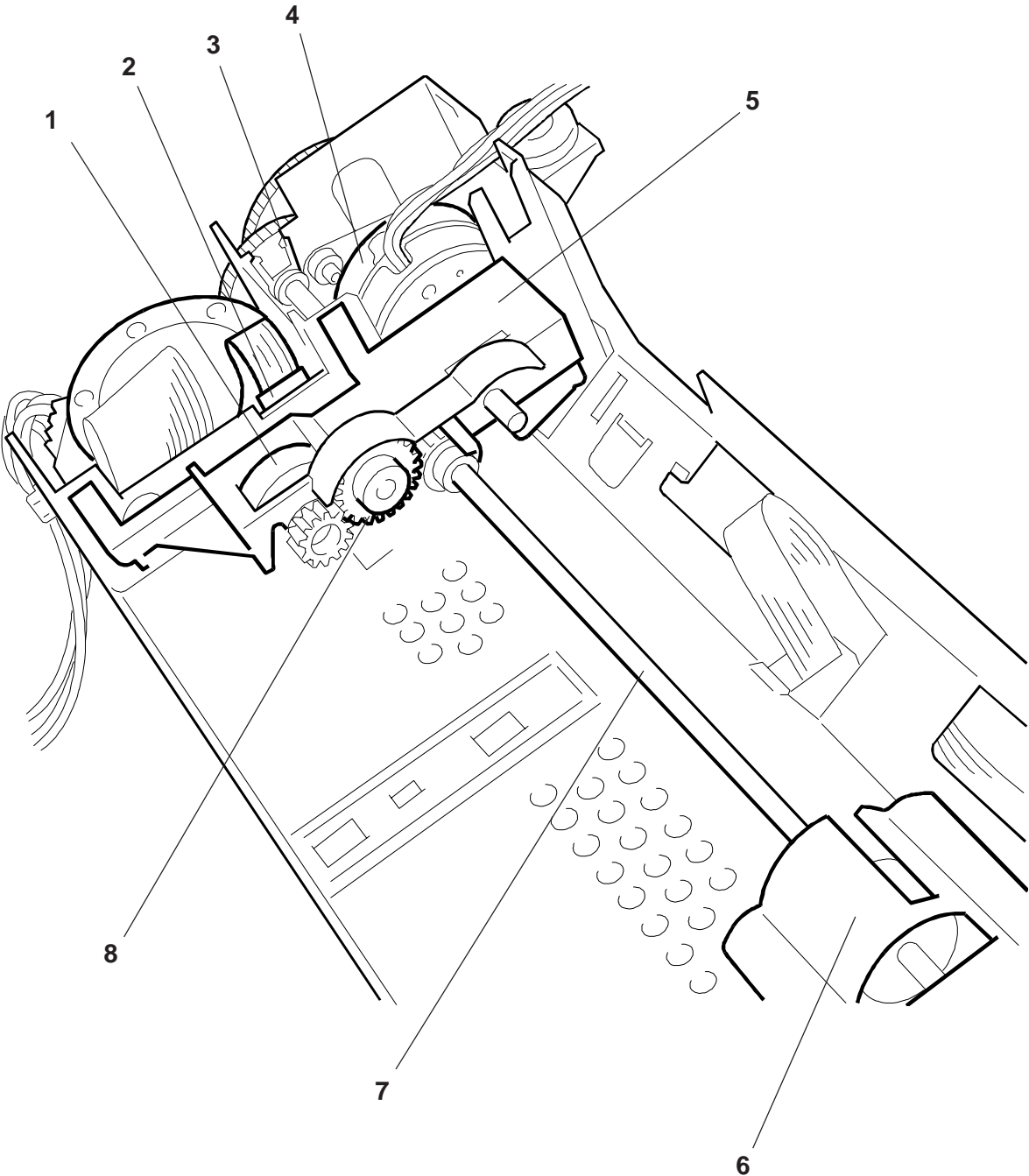
REF.	CODE	DESCRIZIONE	DESCRIPTION
1	474420 W	GRUPPO FONDELLO	BASE UNIT
2	470925 U	GOMMINO APPOGGIO	RUBBER REST
3	474430 Y	RONDELLA FISSAGGIO STAMPANTE	PRINTER FASTENING WASHER
4	474333 S	CAVO GND STRUTTURA	STRUCTURE GND CABLE
5	474429 T	MYLAR PIASTRA	BOARD MYLAR
6	474423 M	LAMIERA SCHERMO PIASTRA	BOARD SHIELD PLATE



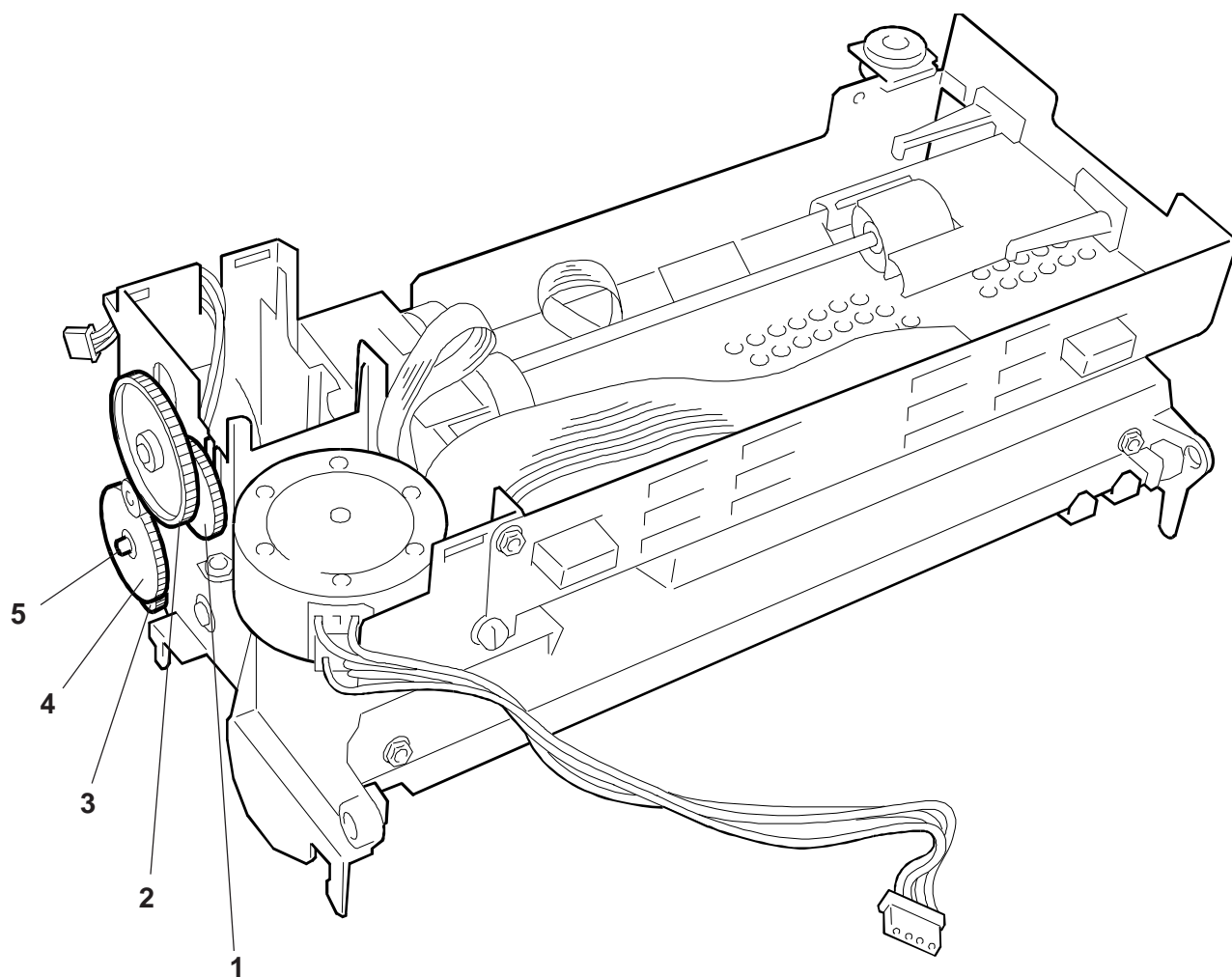
REF.	CODE	DESCRIZIONE	DESCRIPTION
1	474015 P	STRUTTURA IN ZAMA	STRUCTURE
2	474011 K	LAMIERA STRUTTURA	STRUCTURE PLATE
3	474421 K	PIEDINO ANTER. APPOGGIO STAMPANTE	PRINTER RETAINING FRONT FEET
4	474031 P	LAMIERINO REGOLAZIONE CARRELLO	CARRIAGE ADJUSTMENT PLATE
5	474021 M	MOTORE TRASPORTO	TRANSPORT MOTOR
6	474079 F	TAPPO COPRICA VI	COVER CABLE PLUG
7	722149 A	GOMMINO FISSAGGIO	FIXING RUBBER



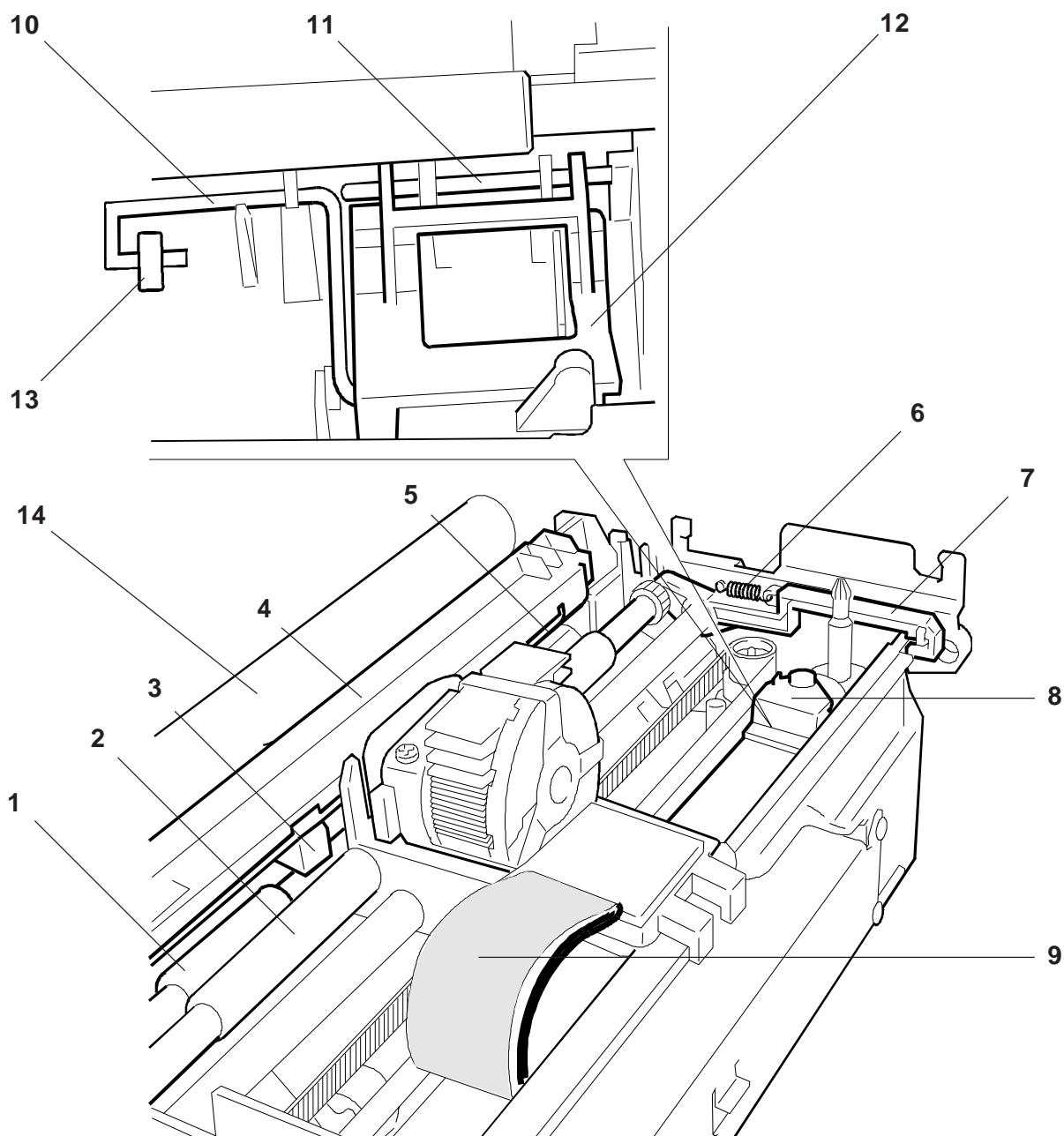
REF.	CODE	DESCRIZIONE	DESCRIPTION
1	474046 W	GR. RULLINO CONTRASTO ALLINEAMENTO	ALIGNMENT CONTRAST ROLLER ASSY
2	474075 T	GR. FOTO ALLINEAMENTO	ALIGNMENT PHOTO ASSY
3	474040 C	BOCCOLA (Npz=2)	BUSH (PCS=2)
4	474020 Y	MOTORE SLIP	SLIP MOTOR
5	474042 S	SUPPORTO INGRANAGGI	GEARS SUPPORT
6	474071 X	STAFFA SUPP. ALBERO MOTO ALLINEAM.	ALIGNMENT MOTION SHAFT SUPPORT ROD
7	474043 T	ALBERO MOTO ALLINEAMENTO	ALIGNMENT MOTION SHAFT
8	474045 V	RUOTA OZIOSA	IDLER GEAR



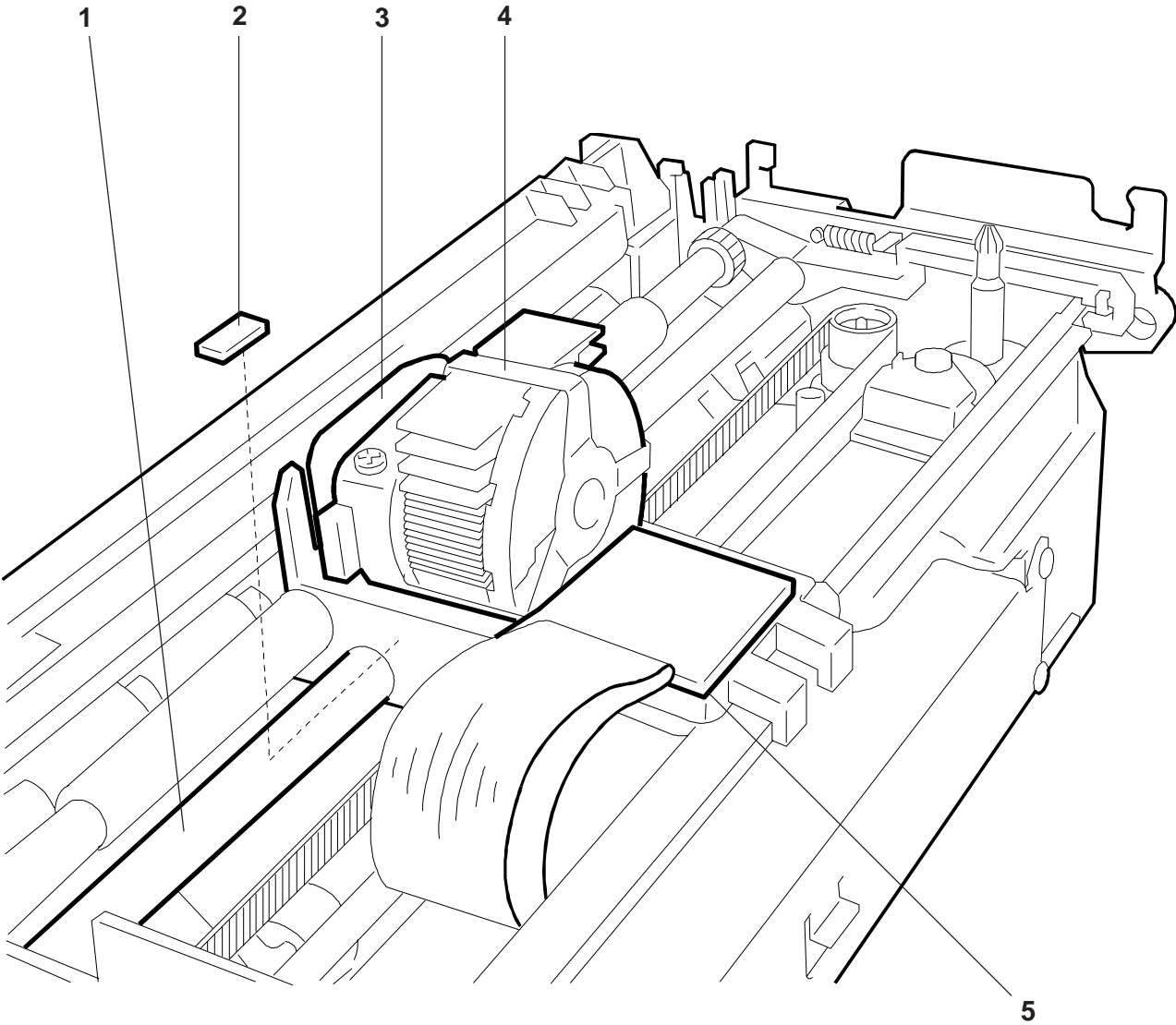
REF.	CODE	DESCRIZIONE	DESCRIPTION
1	474077 V	RUOTA ALBERO ALLINEATORE	ALIGNMENT SHAFT GEAR
2	474076 U	RUOTA RINVIO ALBERO ALLINEAMENTO	ALIGNMENT SHAFT INTERMEDIATE GEAR
3	474039 X	RUOTA PER RULLO SLIP	SLIP ROLLER GEAR
4	474028 U	RUOTA INTERLINEA	LINE FEEDING GEAR
5	474027 K	PERNO PER RUOTA INTERLINEA (Npz = 3)	LINE FEEDING GEAR PIN (Pcs = 3)



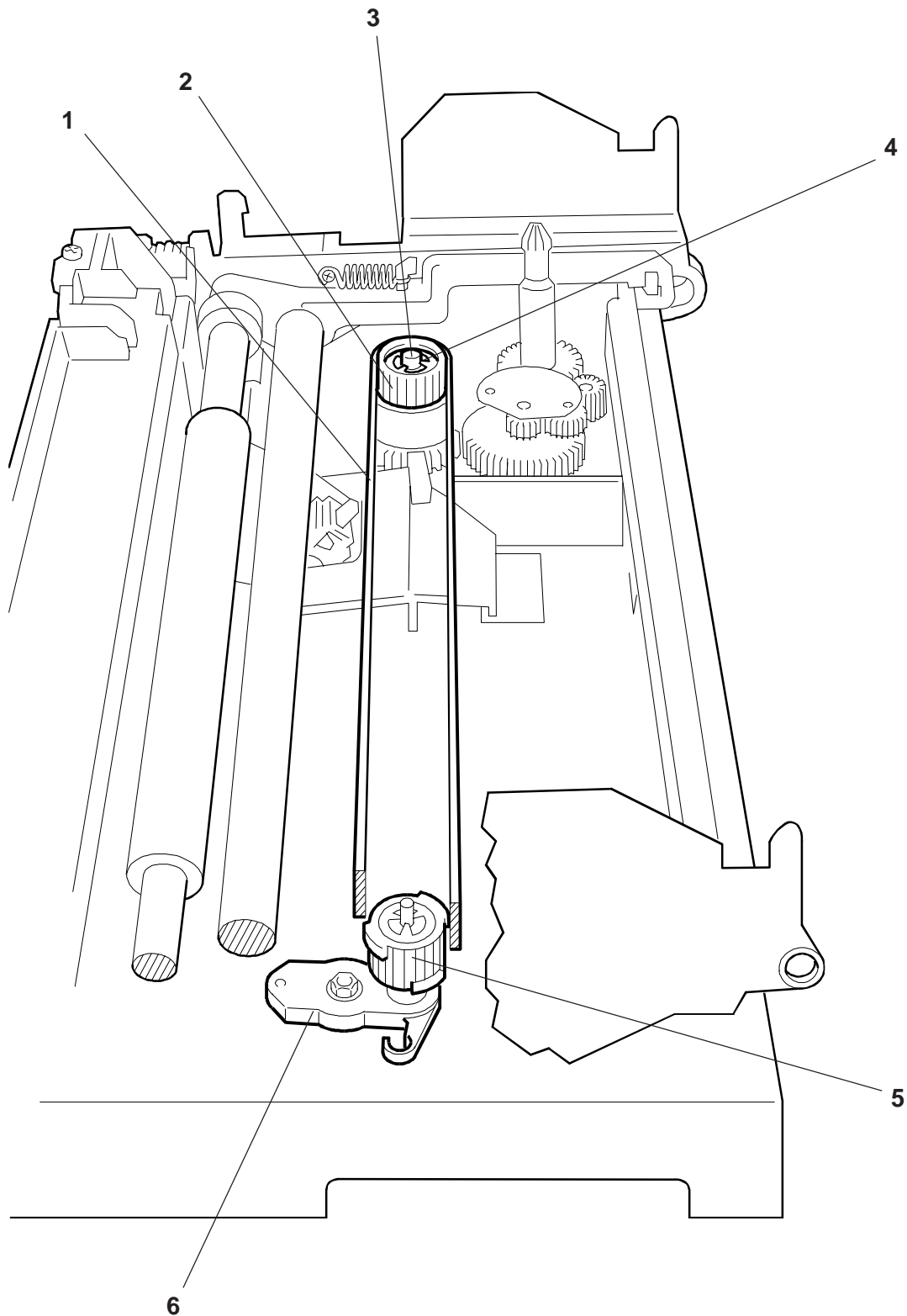
REF.	CODE	DESCRIZIONE	DESCRIPTION
1	474037 M	ALBERO SLIP	SLIP SHAFT
2	474041 Z	ALBERO CONTRASTO SLIP	SLIP CONTRAST SHAFT
3	474033 R	GRUPPO FOTOCELLULA	PHOTOELECTRIC CELL ASSY
4	474018 S	BARRA CONTRASTO STAMPA (PR4)	PRINT CONTRAST BAR (PR4)
	474212 Z	BARRA CONTRASTO STAMPA (PR4 SR)	PRINT CONTRAST BAR (PR4 SR)
5	474032 Q	RASCHIATORE TEGOLO SCRITTURA	PRINT PLATE SCRAPER
6	474190 Y	MOLLA PER TASTATORE (Npz = 2)	SPRING FOR SENSOR (Pcs = 2)
7	474065 Z	TASTATORE (Npz = 2)	SENSOR (Pcs = 2)
8	474072 Y	FERMA FLAT	FLAT BLOCKING
9	474070 A	BANDELLA DI TERRA	GROUND STRIP
10	474055 X	MOLLA A FILO	SPRING
11	474052 U	ALBERINO PER SUPPORTO ALLINEAMENTO	SHAFT FOR ALIGNMENT SUPPORT
12	474048 G	SUPPORTO RULLINO ALLINEAMENTO	ALIGNMENT ROLLER SUPPORT
13	474056 Y	RULLINO CONTRASTO ALLINEATORE	ALIGNER CONTRAST ROLLER
14	474226 X	RULLO PRINCIPALE (PR4 SR)	PRINCIPALL ROLL (PR4 SR)



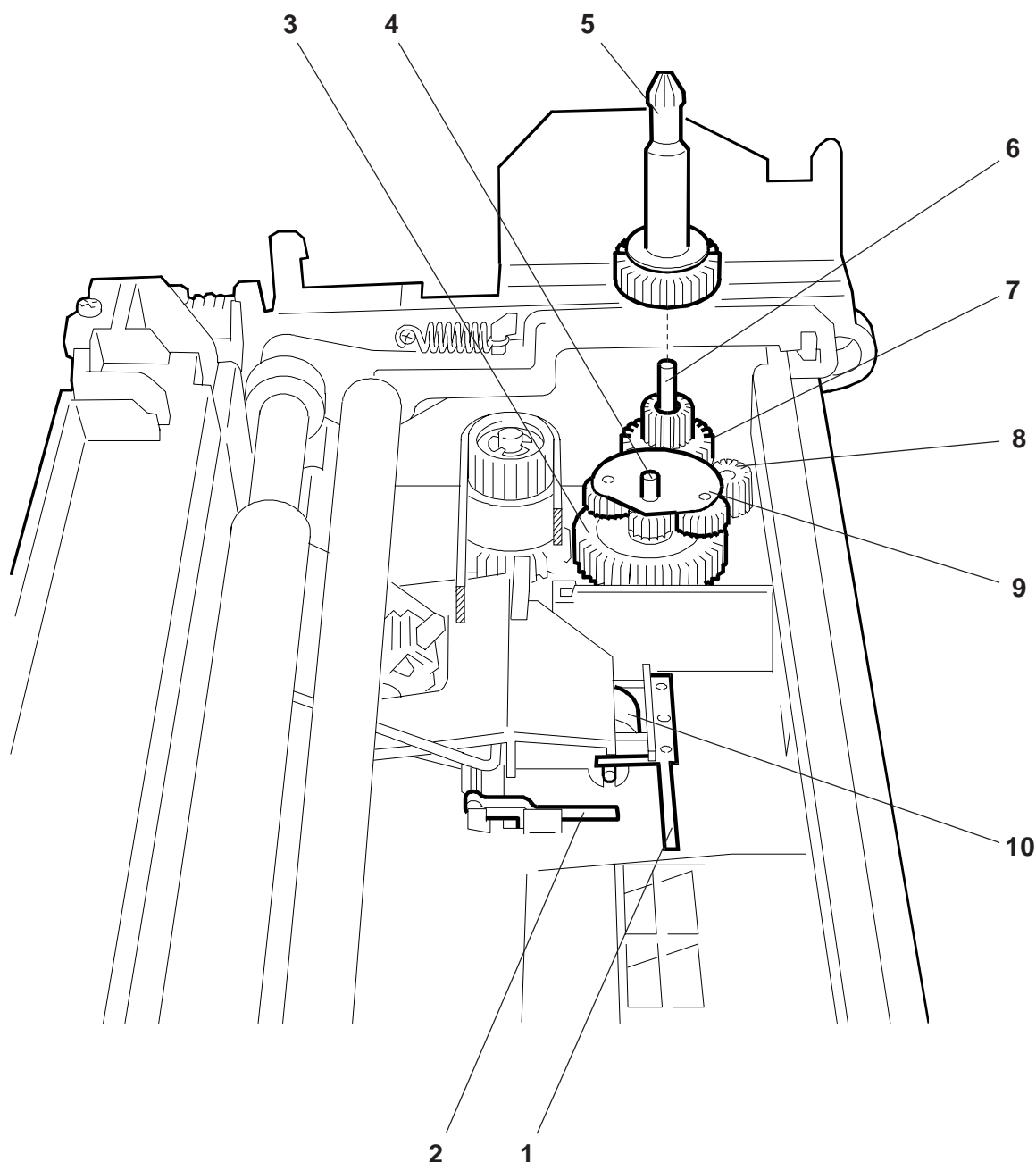
REF.	CODE	DESCRIZIONE	DESCRIPTION
1	474064 Y	ALBERO CARRELLO	CARRIAGE SHAFT
2	474243 G	FELTRINO CARRELLO	CARRIAGE PAD
3	474063 X	CARRELLO TRASPORTO TESTINA	HEAD MOVEMENT CARRIAGE
4	471939 X	GRUPPO TESTINA STAMPA	PRINT HEAD UNIT
5	474149 A	ARRESTO FLAT SU CARRELLO	BLOCKING FLAT FOR CARRIAGE



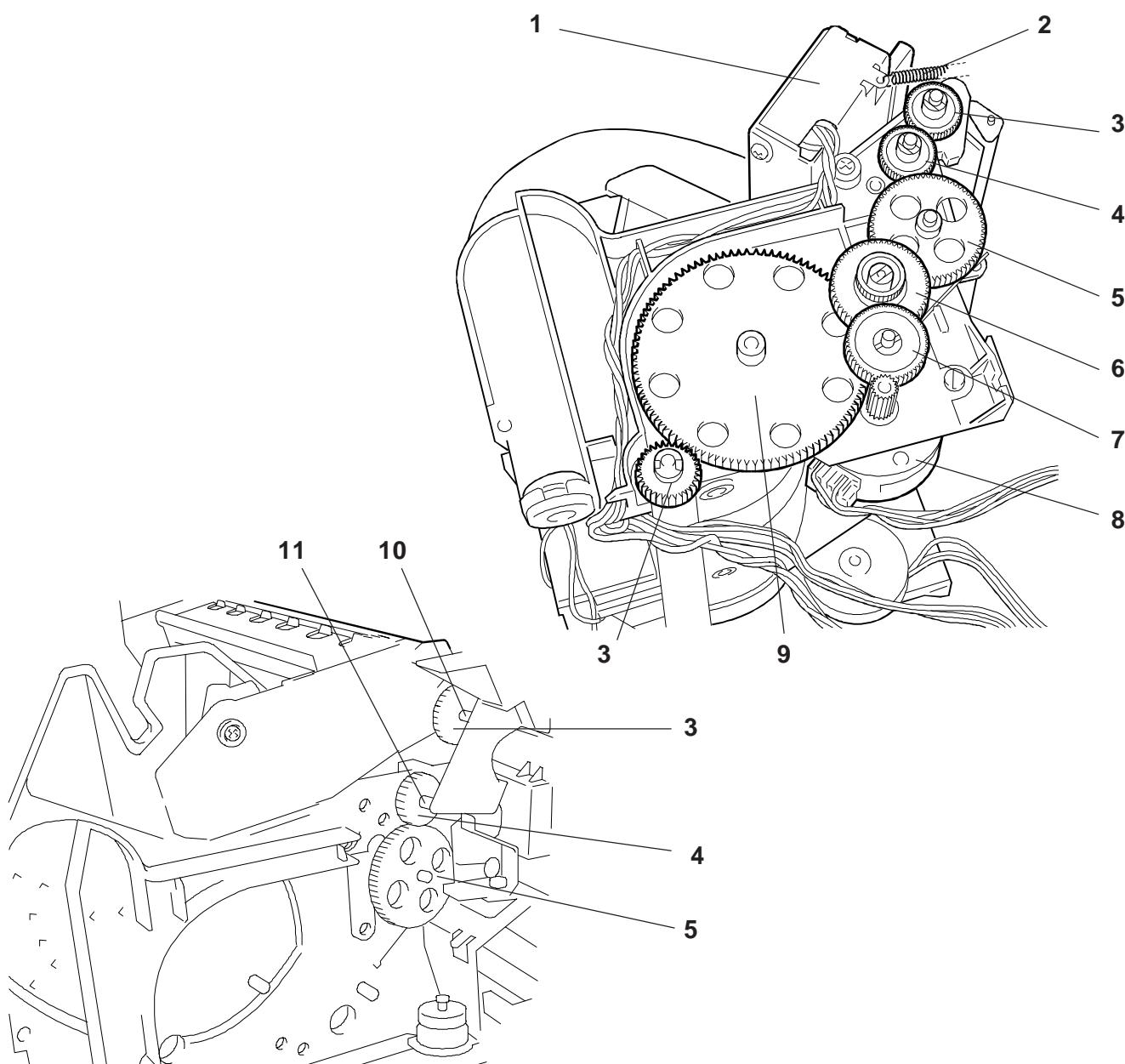
REF.	CODE	DESCRIZIONE	DESCRIPTION
1	474281 X	CINGHIA TRASPORTO CARRELLO	CARRIAGE MOVEMENT BELT
2	474259 Q	PULEGGIA CINGHIA CARRELLO	CARRIAGE BELT PULLEY
3	474025 R	PERNO PULEGGIA (Npz = 2)	PIN FOR PULLEY (Pcs = 2)
4	474241 E	RONDELLA ELASTICA Ø 2,3 (Npz = 2)	SPRING WASHER Ø 2.3 (Pcs = 2)
5	474067 T	PULEGGIA RINVIO CINGHIA	INTERMEDIATE PULLEY BELT
6	474050 E	STAFFA SUPPORTO PULEGGIA RINVIO	INTERMEDIATE PULLEY SUPPORT ROD



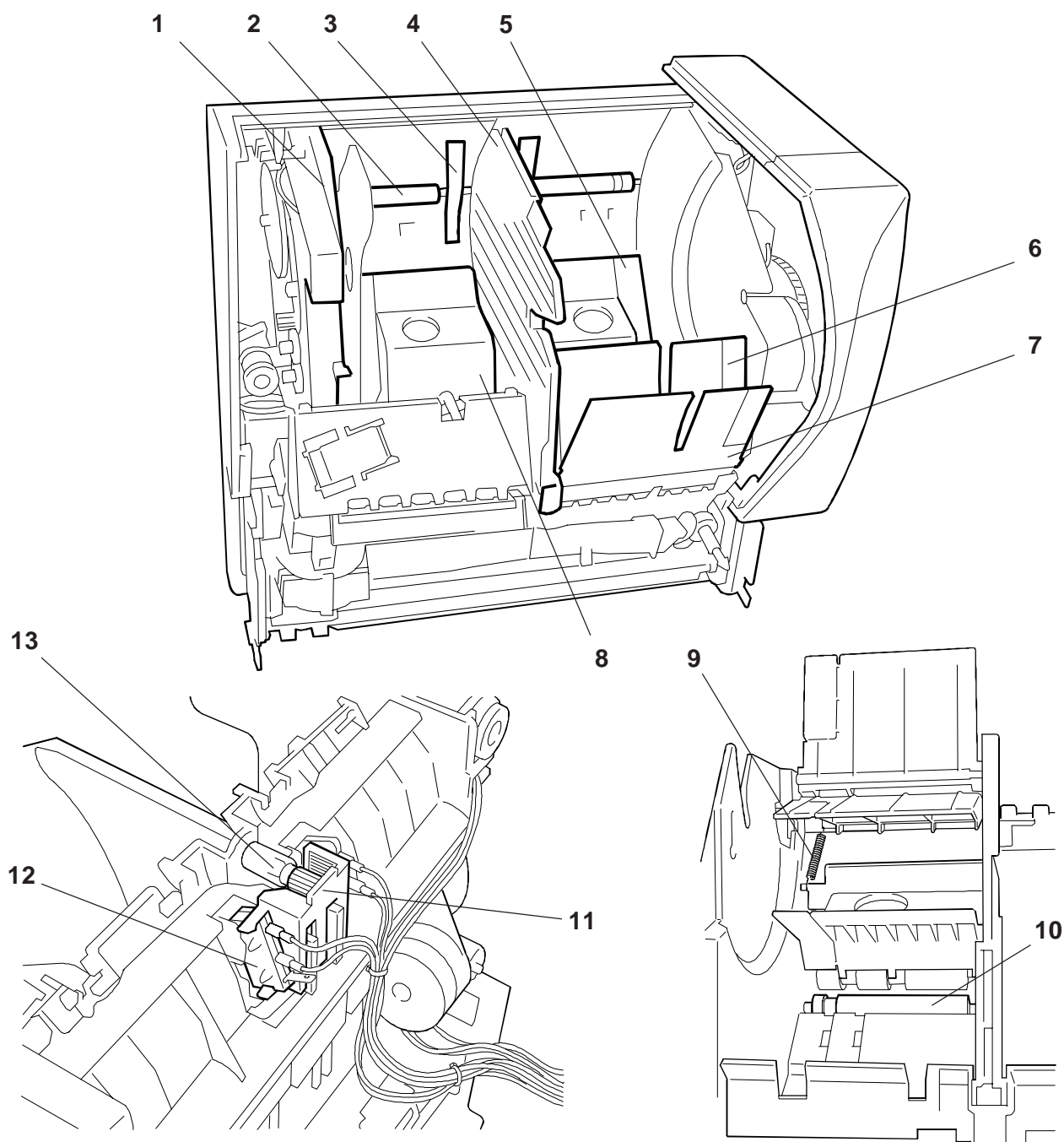
REF.	CODE	DESCRIZIONE	DESCRIPTION
1	474051 T	BALESTRA RULLINO ALLINEATORE	ALIGNMENT ROLLER LEAF SPRING
2	474053 V	ARRESTO DOCUMENTO	DOCUMENT CATCH
3	474062 W	RUOTA SCAMBIATORE	EXCHANGER GEAR
4	474023 P	PERNO PER SCAMBIATORE	PIN FOR EXCHANGER
5	474057 Z	LANCIA PER CARTUCCIA	REDUCER GEAR
6	949002 F	PERNO PER LANCIA	PIN FOR LANCE
7	474058 A	RUOTA RIDUTTORE	REDUCER GEAR
8	474061 V	RUOTA OZIOSA	IDLER GEAR
9	474059 B	GRUPPO SCAMBIATORE	EXCHANGER ASSEMBLY
10	474049 H	RULLINO ALLINEAMENTO	ALIGNMENT ROLLER



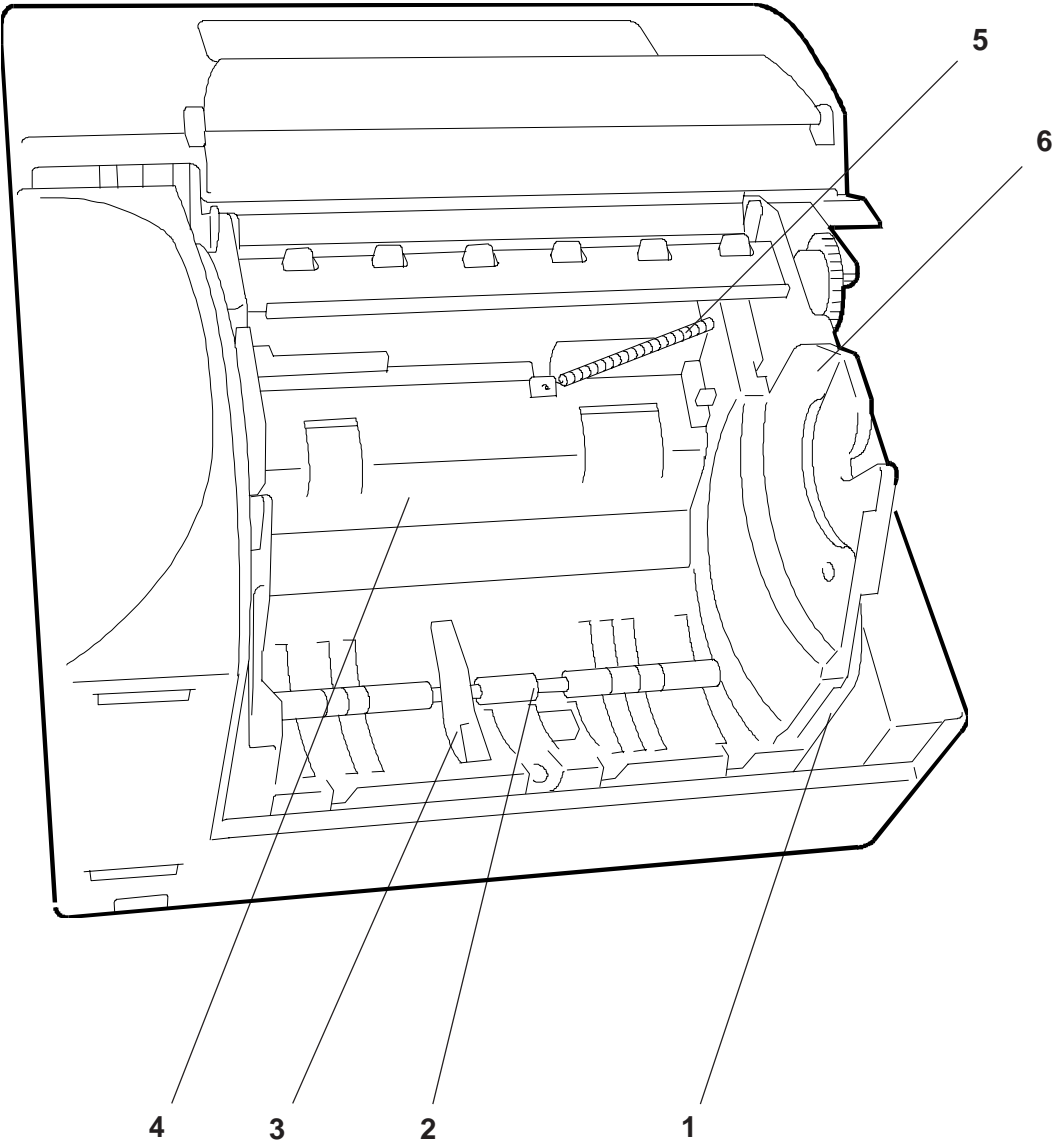
REF.	CODE	DESCRIZIONE	DESCRIPTION
1	566179 C	GR. TAGLIERINA MONTATA	MOUNTING CUTTER ASSY
2	474162 X	MOLLA AGGANCIAMENTO TAGLIERINA	CUTTER HOOKING SPRING
3	474084 M	RUOTA Z=32	GEAR, 32T
4	474098 T	RUOTA OZIOSA Z=32	IDLER GEAR, 32T
5	474092 M	RUOTA PRINCIPALE TRASCINAM. CARTA	PAPER FEED MAIN GEAR
6	474088 Z	RUOTA Z=52	GEAR, 52T
7	474082 K	RUOTA RIDUZIONE MOTORE	MOTOR REDUCTION GEAR
8	474078 E	MOTORE RICEVUTA	RECEIPT MOTOR
9	474083 L	RUOTA OZIOSA Z=122	IDLER GEAR, 122T
10	474210 B	RULLO SUPERIORE	UPPER ROLLER
11	474224 V	RULLO SUPPORTO PULEGGIA	PULLEY SUPPORT ROLLER



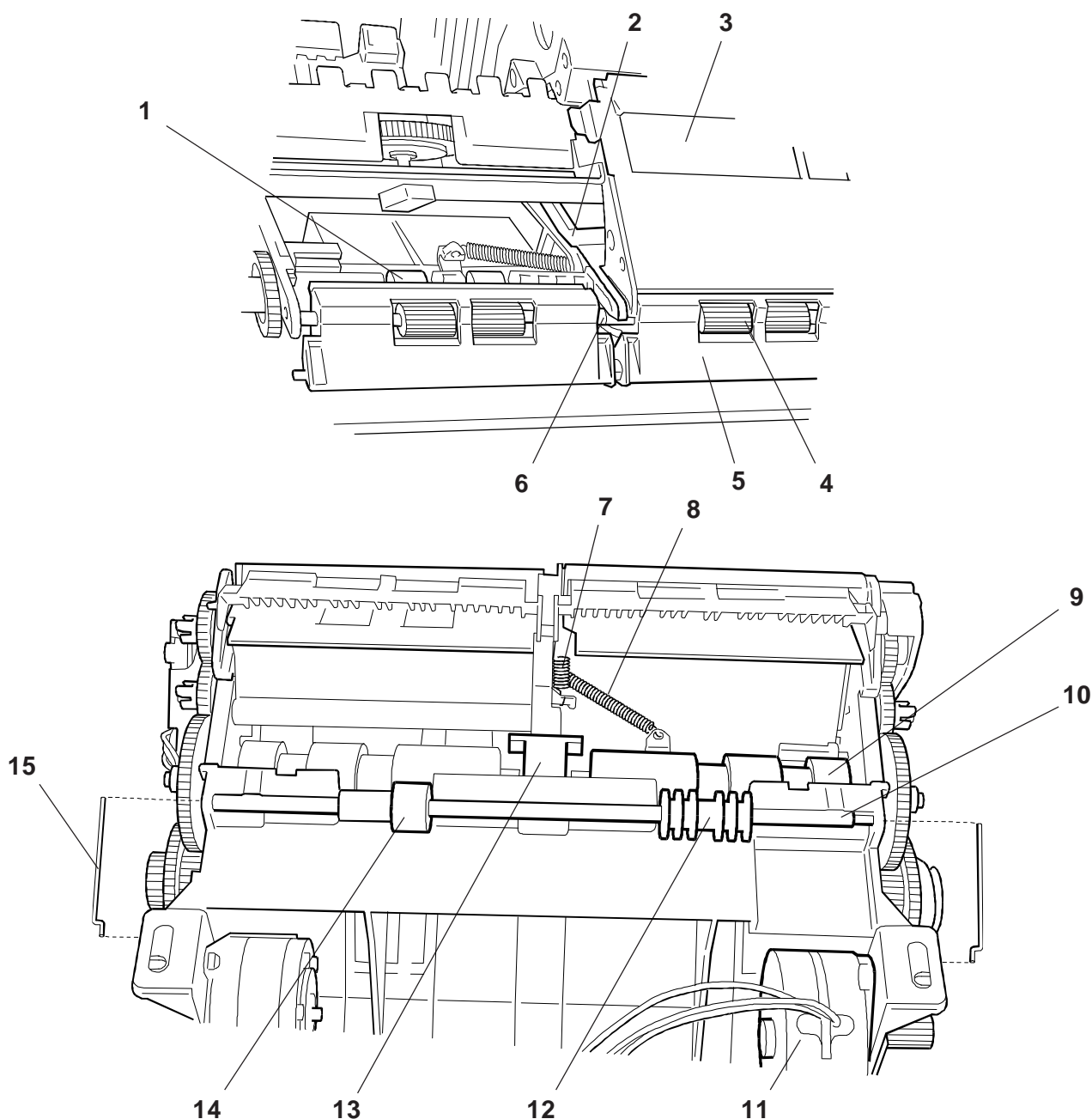
REF.	CODE	DESCRIZIONE	DESCRIPTION
1	474080 V	CULLA PER ROTOLO	CRADLE FOR ROLL
2	474086 P	RULLINO MOTORIZZAZ.SUPP.ROTOLO (Npz=2)	ROLL SUPPORT MOTION ROLLER (Pcs=2)
3	474118 T	PALETTA SEGNALE FINE CARTA (Npz=2)	PAPER END SIGNAL SENSING LEVER (Pcs=2)
4	474085 N	FIANCO CENTRALE	CENTRAL SIDE FRAME
5	474100 E	CONVOGLIATORE GIORNALE INFERIORE	LOWER JOURNAL CONVEYOR
6	474103 V	CONVOGLIATORE INFER. RIAVVOLGITORE	REWINDER LOWER CONVEYOR
7	474105 X	CONVOGLIATORE SUPER. RIAVVOLGITORE	REWINDER UPPER CONVEYOR
8	474102 U	CONVOGLIATORE RICEVUTE INFERIORE	LOWER RECEIPT CONVEYOR
9	474104 W	MOLLA CONVOGLIATORE INFER.RIAVVOLG.	REWINDER LOWER CONVEYOR SPRING
10	474094 P	RULLINO MOTORIZZ.SUPP.PULEGGIA (Npz=2)	PULLEY SUPPORT MOTION ROLLER(Pcs=2)
11	474117 J	SUPPORTO MICRO FINE CARTA	PAPER END MICROSWITCH SUPPORT
12	474331 Y	MICRO FINE CARTA	PAPER END MICROSWITCH
13	474120 Z	REGOLATORE PALETTE	SENSING LEVER ADJUSTMENT



REF.	CODE	DESCRIZIONE	DESCRIPTION
1	474223 U	CULLA PORTA ROTOLO	CRADLE FOR ROLL
2	474225 W	RULLINO MOTORIZZAZ.SUPP.ROTOLO	ROLL SUPPORT MOTION ROLLER
3	474118 T	PALETTA SEGNALE FINE CARTA	PAPER END SIGNAL SENSING LEVER
4	474222 T	CONVOGLIATORE	CONVEYOR
5	474247 C	MOLLA PER CONVOGLIATORE	SPRING FOR CONVEYOR
6	474221 S	FIANCO LATERALE SINISTRO	LEFT SIDE



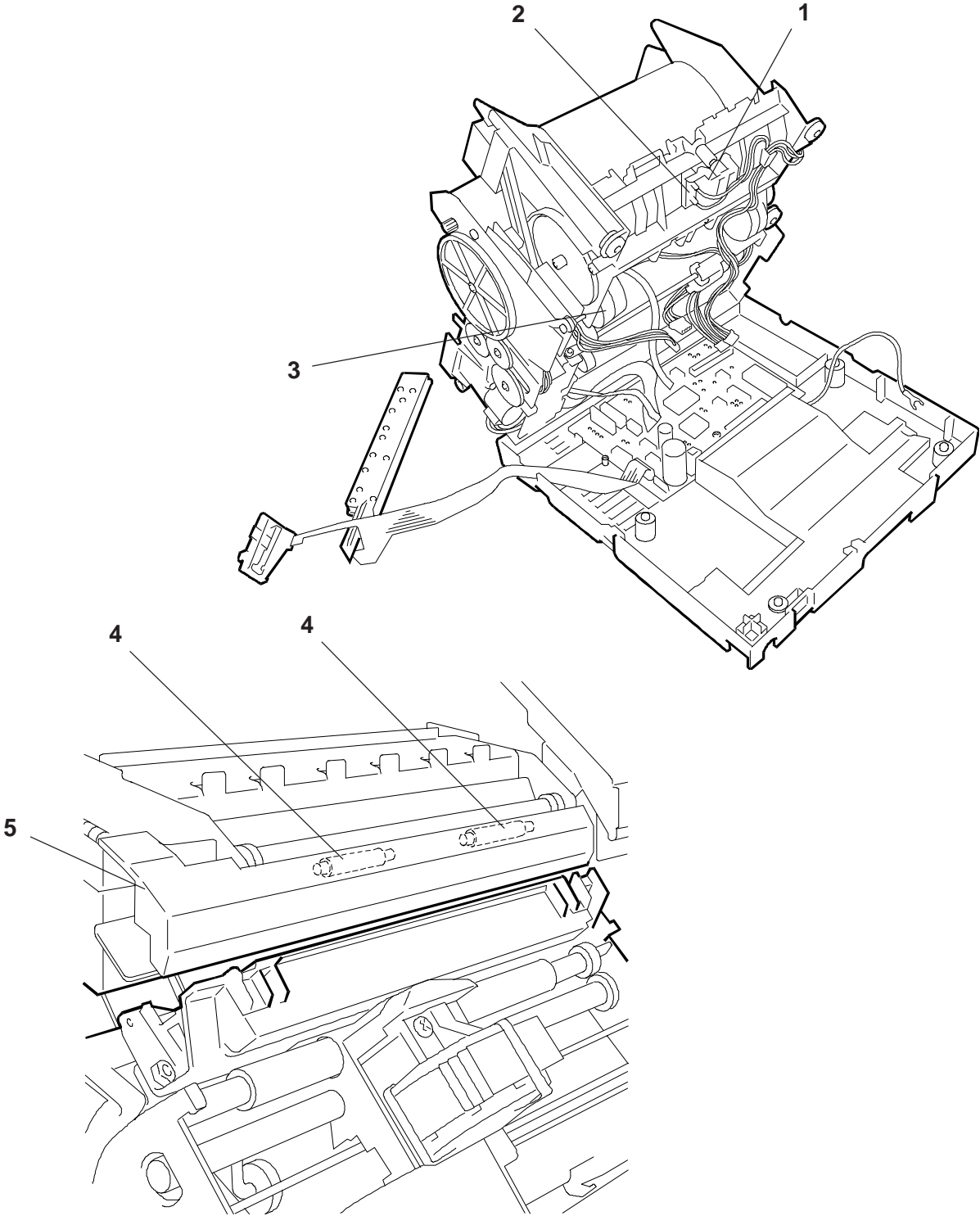
REF.	CODE	DESCRIZIONE	DESCRIPTION
1	474093 N	RULLO SUPERIORE	UPPER ROLLER
2	474146 X	MESSA A TERRA ALBERO RULLINI	ROLLER SHAFT GROUND
3	474106 Y	TEGOLO GUIDACARTA	PAPER GUIDE PLATE
4	474131 Q	CONTRO RULLINO SUPERIORE	UPPER CONTRAST ROLLER
5	474095 Q	CONVOGLIATORE ANTERIORE (Npz=2)	FRONT CONVEYOR (Pcs=2)
6	474132 R	ALBERO CONTRO RULLINO SUPERIORE	UPPER OPPONENT ROLLER SHAFT
7	474133 J	MOLLA SPECIALE AGGANCIO	HOOKING SPECIAL SPRING
8	474101 T	MOLLA CONVOGLIATORI INFERIORI	LOWER CONVEYORS SPRING
9	474091 L	RULLO PRINCIPALE (Npz=2)	MAIN ROLLER (Pcs=2)
10	474112 M	ALBERO RULLINI TRASCINAMEN.PRINCIPALE	MAIN FEED ROLLERS SHAFT
11	474097 J	MOTORE GIORNALE	JOURNAL MOTOR
12	474113 N	CONTRO RULLO	CONTRAST ROLLER
13	474145 W	CUNEO SBLOCCA BURRAGE	PAPER JAM RELEASE WEDGE
14	474143 U	RULLINO ANTISBANDO	ANTI-SKEW ROLLER
15	474114 P	BALESTRA ALBERO RULLINI (Npz=2)	ROLLERS SHAFT LEAF SPRING (Pcs=2)



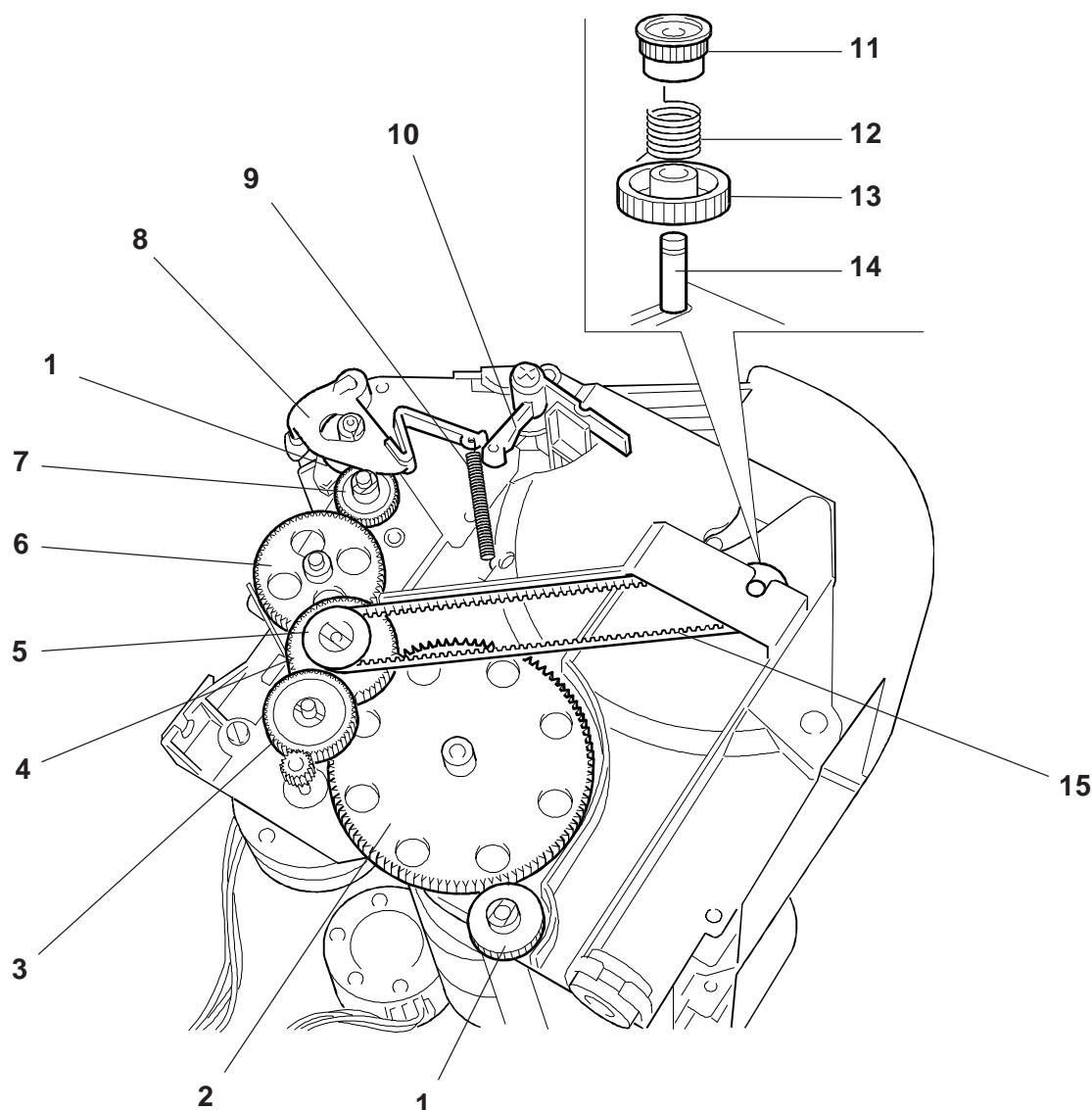
GRUPPO TRATTAMENTO CARTA 3
PAPER FEEDING 3 ASSEMBLY

PR4 SR

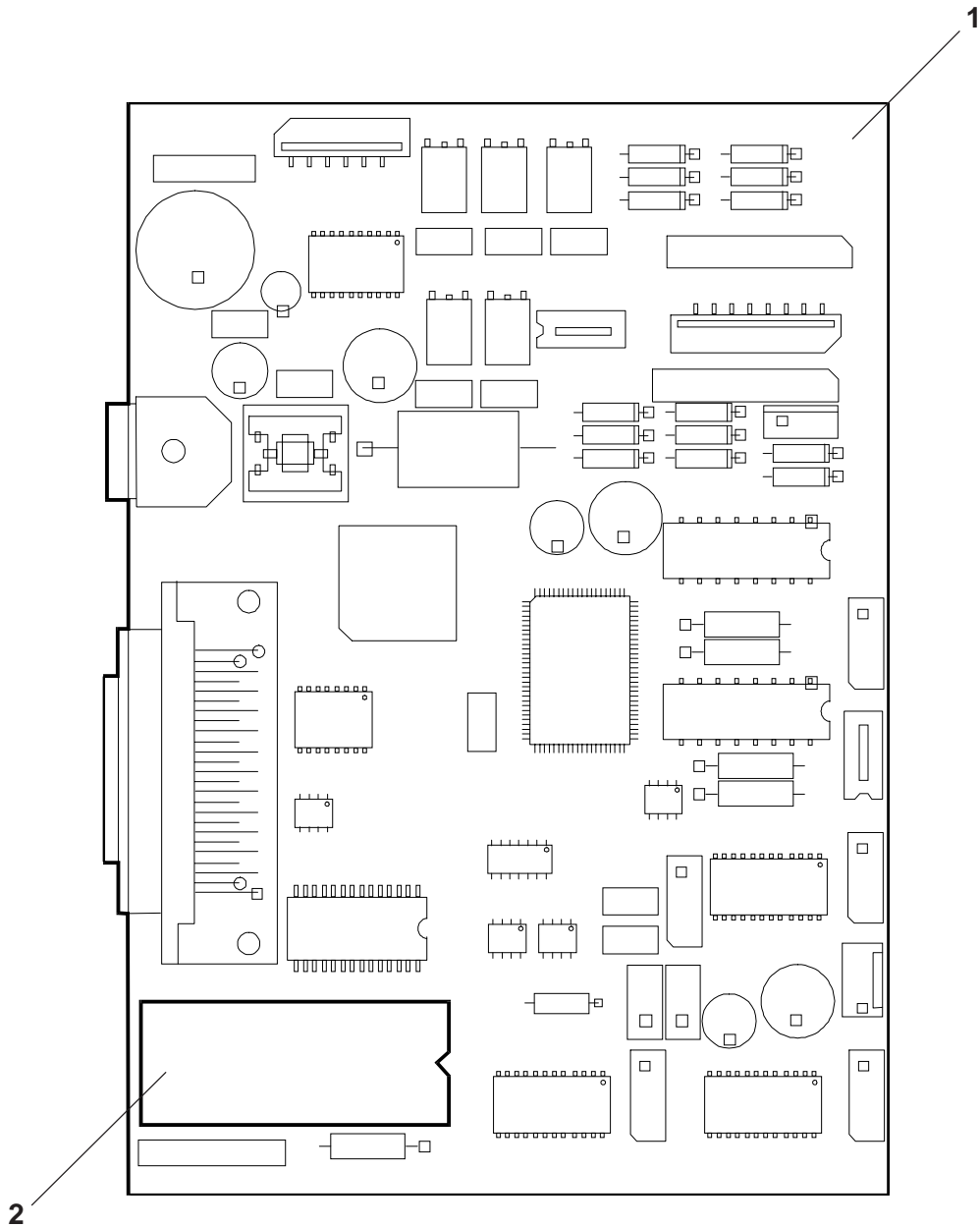
REF.	CODE	DESCRIZIONE	DESCRIPTION
1	474117 J	SUPPORTO MICRO FINE CARTA	PAPER END MICROSWITCH SUPPORT
2	474356 H	GRUPPO MICRO FINE CARTA	PAPER END MICROSWITCH ASSEMBLY
3	474232 V	GRUPPO MOTORE GIORNALE	JOURNAL MOTOR ASSEMBLY
4	474201 F	RULLINO TRAZIONE RICEVUTA	RECEIPT TRACTION ROLLER
5	474161 W	GRUPPO PALPEBRA TELAIO	FRAME FLAP ASSEMBLY



REF.	CODE	DESCRIZIONE	DESCRIPTION
1	474084 M	RUOTA Z=32	GEAR, 32T
2	474083 L	RUOTA OZIOSA Z=122	IDLE GEAR, 122T
3	474082 K	RUOTA RIDUZIONE MOTORE	MOTOR REDUCTION GEAR
4	474088 Z	RUOTA Z=52	GEAR, 52T
5	474089 S	FLANGIA PER RUOTA	FLANGE FOR GEAR
6	474092 M	RUOTA PRINCIPALE TRASCINAMEN. CARTA	PAPER FEED MAIN GEAR
7	474098 T	RUOTA OZIOSA Z=32	IDLE GEAR, 32T
8	474140 D	LEVA APERTURA PALPEBRE	FLAP OPENING LEVER
9	474142 T	MOLLA RICHIAMO	RECALL SPRING
10	474141 S	COMANDO APERTURA PALPEBRE	FLAP OPENING COMMAND
11	474109 B	PULEGGIA FRIZIONE (PR4)	CLUTCH PULLEY (PR4)
	474216 V	PULEGGIA FRIZIONE (PR4 SR)	CLUTCH PULLEY (PR4 SR)
12	474111 L	MOLLA FRIZIONE (PR4)	CLUTCH SPRING (PR4)
	474213 S	MOLLA FRIZIONE (PR4 SR)	CLUTCH SPRING (PR4 SR)
13	474110 X	RUOTA FRIZIONE	CLUTCH GEAR
14	474108 A	PERNO FRIZIONE RIAVVOLGIMENTO	REWINDER CLUTCH PIN
15	474107 Z	CINGHIA RIAVVOLGIMENTO	REWINDER BELT



REF.	CODE	DESCRIZIONE	DESCRIPTION
1	612795 U	BAX45 - PIASTRA BASE	MAIN BOARD BAX45
2	242364 Q	FLASH EPROM INIZIALIZZATA	INITIALIZED FLASH EPROM



REF.	CODE	DESCRIZIONE	DESCRIPTION
1	924917 F	VITE AUTOFILETTANTE 2,9 x 6,5	SELF-TAPPING SCREW 2.9 x 6.5
2	927005 L	VITE SCREWPLAST 2,9 x 6,5	SCREWPLAST 2.9 x 6.5
3	927006 M	VITE SCREWPLAST 2,9 x 9,5	SCREWPLAST 2.9 x 9.5
4	966431 J	RONDELLA Ø 4	WASHER Ø 4
5	920048 B	VITE A TESTA CILINDRICA M3 x 6	CHEESEHEAD SCREW M3 x 6
6	925599 J	VITE A TESTA ESAGONALE M3 x 4	HEXAGONAL HEADED SCREW M3 x 4
7	927013 B	VITE SCREWPLAST 2,9 x 13	SCREWPLAST 2.9 x 13
8	945190 Y	STAFFA Ø 1,9	ROD Ø 1.9
9	945320 H	STAFFA Ø 3,2	ROD Ø 3.2
10	945230 F	STAFFA Ø 2,3	ROD Ø 2.3
11	945500 F	STAFFA Ø 5	ROD Ø 5
12	945400 B	STAFFA Ø 4	ROD Ø 4
13	966321 T	RONDELLA DENTATA Ø 3	TOOTHED WASHER Ø 3
14	925601 U	VITE A TESTA ESAGONALE M3 x 6	HEXAGONAL HEADED SCREW M3 x 6
15	927008 X	VITE SCREWPLAST 3,5 x 6	SCREWPLAST 3.5 x 6
16	940121 V	RONDELLA Ø 3	WASHER Ø 3

INDICE GENERALE DEI CODICI GENERAL CODES INDEX

CODICE CODE	PAGINA PAGE	CODICE CODE	PAGINA PAGE	CODICE CODE	PAGINA PAGE
242364Q	18	474088Z	17	474247C	14
470925U	4	474089S	17	474259Q	10
471939X	9	474091L	15	474281X	10
474011K	5	474092M	12	474331Y	13
474014N	3	474092M	17	474333S	4
474015P	5	474093N	15	474356H	16
474018S	8	474094P	13	474419Z	3
474020Y	6	474095Q	15	474420W	4
474021M	5	474097J	15	474421K	5
474023P	11	474098T	12	474422L	3
474025R	10	474098T	17	474423M	4
474027K	7	474100E	13	474424N	3
474028U	7	474101T	15	474425P	3
474031P	5	474102U	13	474426Q	3
474032Q	8	474103V	13	474427R	3
474033R	8	474104W	13	474428S	3
474037M	8	474105X	13	474429T	4
474039X	7	474106Y	15	474430Y	4
474040C	6	474107Z	17	474441X	3
474041Z	8	474108A	17	474442Y	3
474042S	6	474109B	17	474443Z	3
474043T	6	474110X	17	474446U	3
474045V	6	474111L	17	474474Y	3
474046W	6	474112M	15	474688F	3
474048G	8	474113N	15	474691S	3
474049H	11	474114P	15	474701C	3
474050E	10	474115Q	3	566179C	12
474051T	11	474117J	13	612795U	18
474052U	8	474117J	16	722149A	5
474053V	11	474118T	13	920048B	19
474055X	8	474118T	14	924917F	19
474056Y	8	474120Z	13	925599J	19
474057Z	11	474131Q	15	925601U	19
474058A	11	474132R	15	927005L	19
474059B	11	474133J	15	927006M	19
474061V	11	474140D	17	927008X	19
474062W	11	474141S	17	927013B	19
474063X	9	474142T	17	940121V	19
474064Y	9	474143U	15	945190Y	19
474065Z	8	474145W	15	945230F	19
474067T	10	474146X	15	945320H	19
474070A	8	474149A	9	945400B	19
474071X	6	474161W	16	945500F	19
474072Y	8	474162X	12	949002F	11
474075T	6	474190Y	8	966321T	19
474076U	7	474201F	16	966431J	19
474077V	7	474210B	12		
474078E	12	474212Z	8		
474079F	5	474213S	17		
474080V	13	474216V	17		
474082K	12	474221S	14		
474082K	17	474222T	14		
474083L	12	474223U	14		
474083L	17	474224V	12		
474084M	12	474225W	14		
474084M	17	474226X	8		
474085N	13	474232V	16		
474086P	13	474241E	10		
474088Z	12	474243G	9		