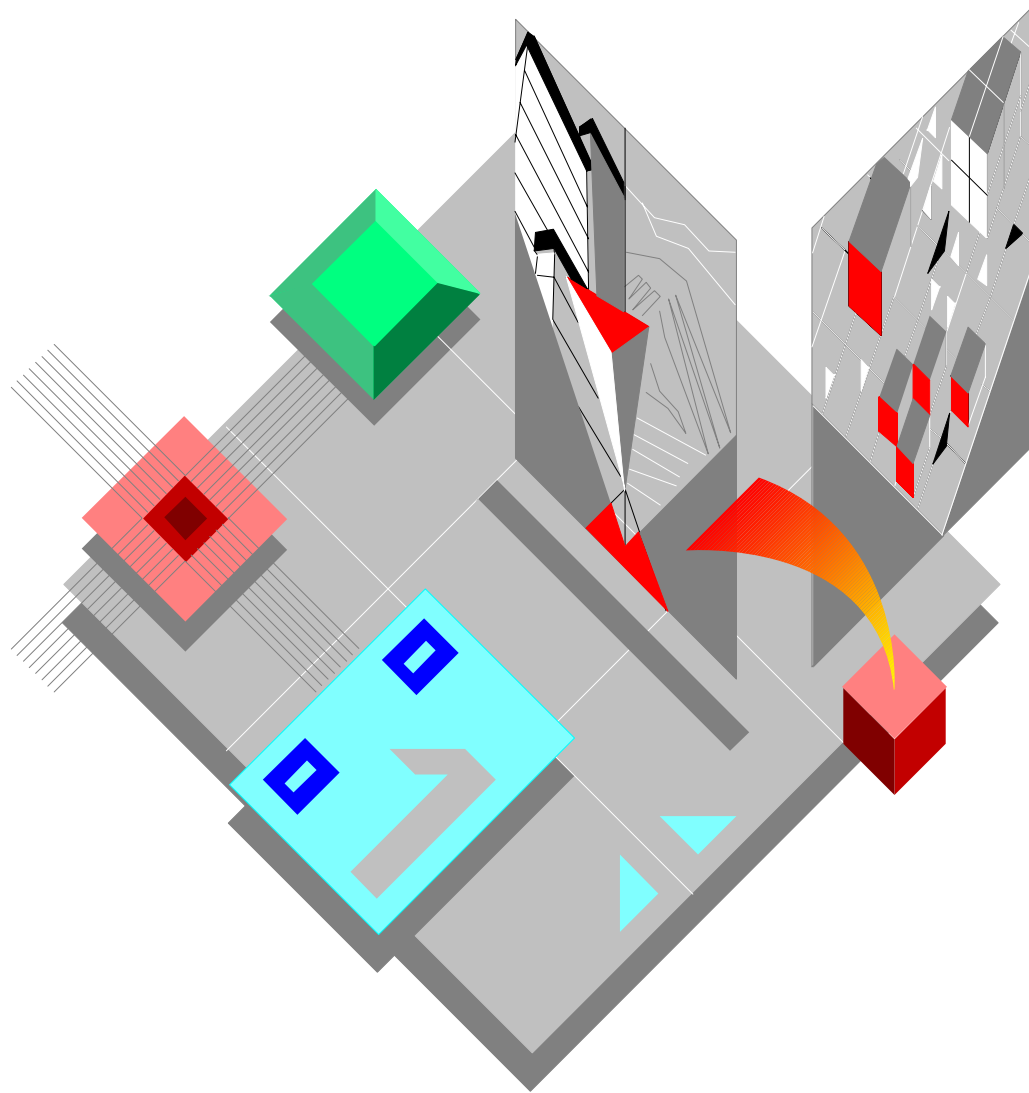


Field Engineering Library



JP 883

**CATALOGO PARTI DI RICAMBIO
SPARE PARTS CATALOGUE**

Copyright © 1998 Olivetti Lexikon S.p.A.

olivetti

Stampante - Printer

JP 883

CATALOGO PARTI DI RICAMBIO
SPARE PARTS CATALOGUE

Code 685100A-00

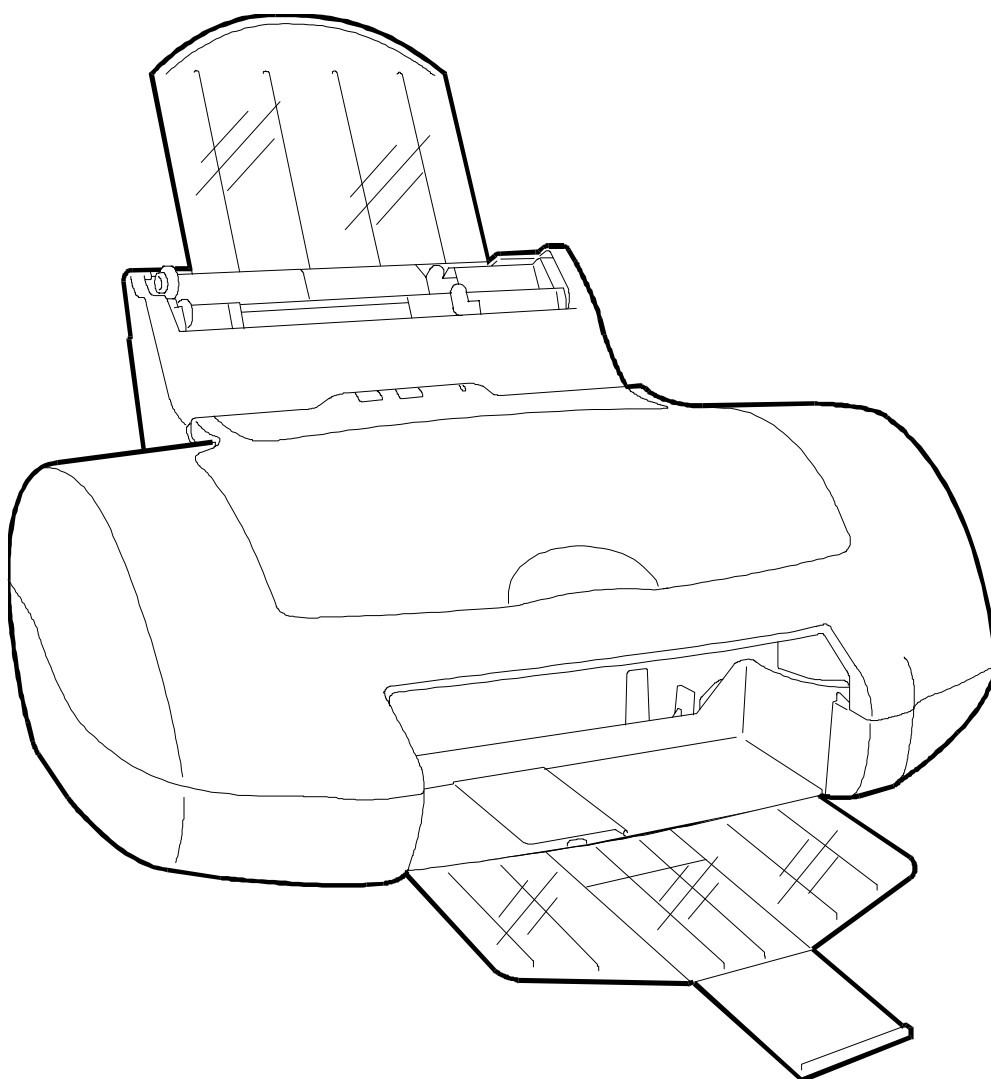
IMPORTANTE

PUBBLICAZIONE REDATTA DA OLIVETTI LEXIKON (GESTIONE RICAMBI E SCORTE).
QUESTO CATALOGO È L' UNICO DOCUMENTO AL QUALE FARE RIFERIMENTO PER
ORDINARE LE PARTI DI RICAMBIO.

IMPORTANT

THIS PUBLICATION IS WRITTEN BY OLIVETTI LEXIKON (SPARE PARTS DEPARTMENT).
THIS CATALOGUE IS THE ONLY DOCUMENT TO WHICH REFERENCE MAY BE MADE
FOR ORDERING SPARE PARTS.

JP 883



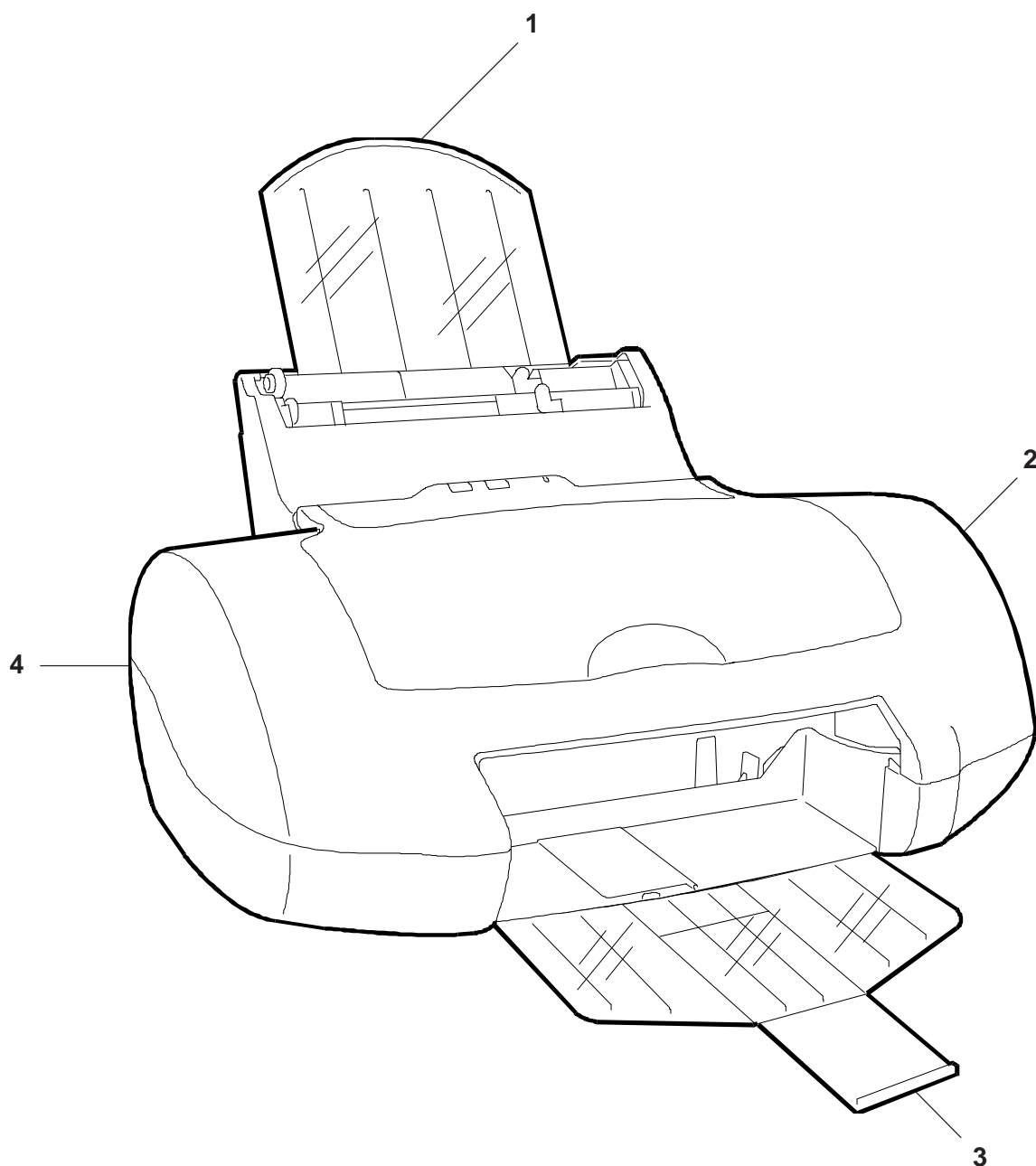
INDICE

GRUPPO CARROZZERIA 1	Pag. 3
GRUPPO CARROZZERIA 2	" 4
USCITA CARTA / GR. ALIMENTATORE	" 5
GRUPPO CASSETTO	" 6
PARTI ELETTRICHE	" 7
GRUPPO MOVIMENTO CARRELLO	" 8
GR. CARRELLO / GR. POMPA	" 9
GRUPPO MECCANISMI	" 10
GRUPPO SENSORI	" 11
PIASTRA BASE	" 12
INDICE GENERALE DEI CODICI	Pag. 14

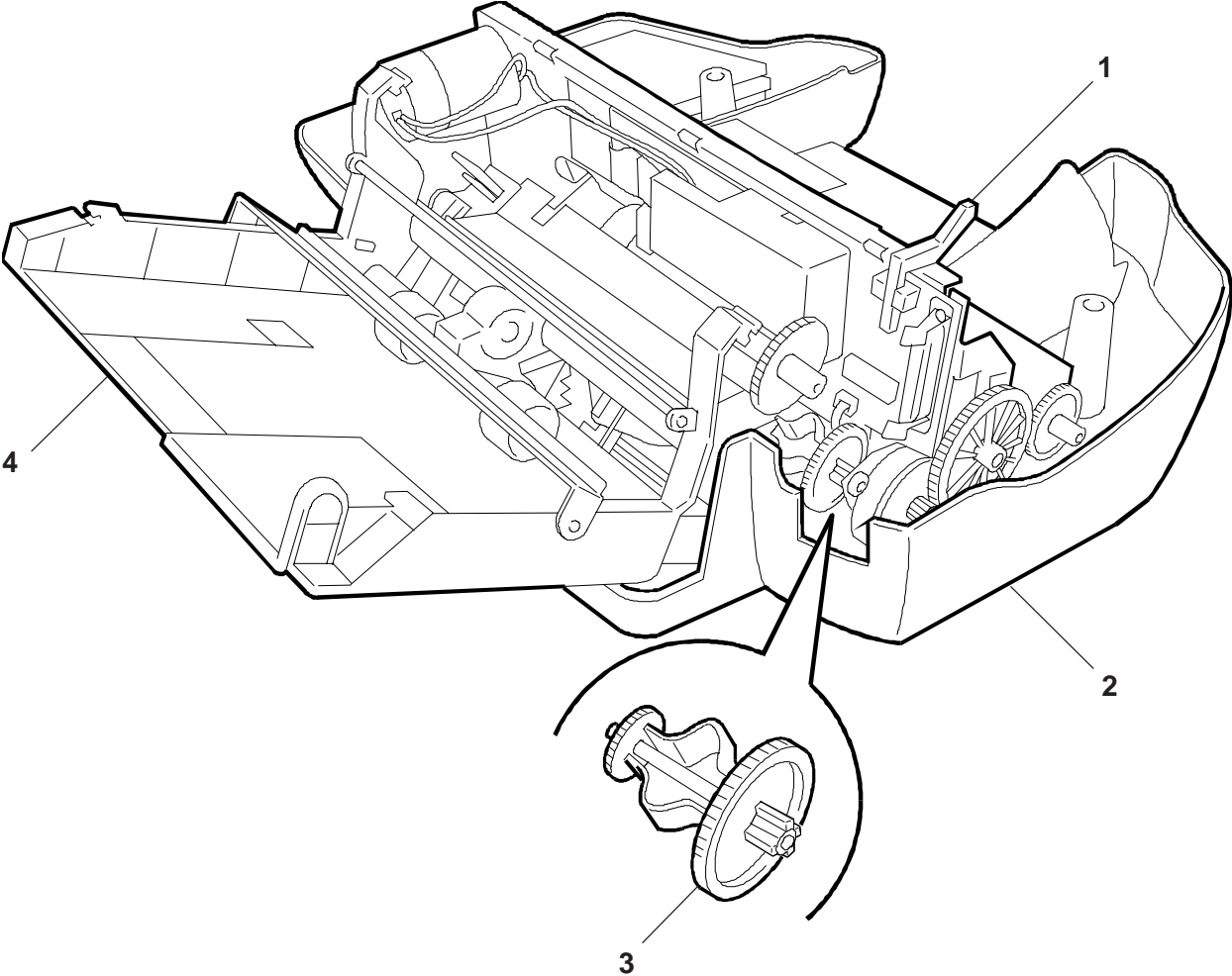
INDEX

CASING ASSEMBLY 1	Pag. 3
CASING ASSEMBLY 2	" 4
PAPER EXIT / POWER SUPPLY ASSY	" 5
CASSETTE ASSEMBLY	" 6
ELECTRICAL COMPONENTS	" 7
CARRIAGE MOVEMENT ASSY	" 8
CARRIAGE ASSY / PUMP ASSY	" 9
MECHANISM	" 10
SENSORS GROUP	" 11
MAIN BOARD	" 12
GENERAL INDEX	Pag. 14

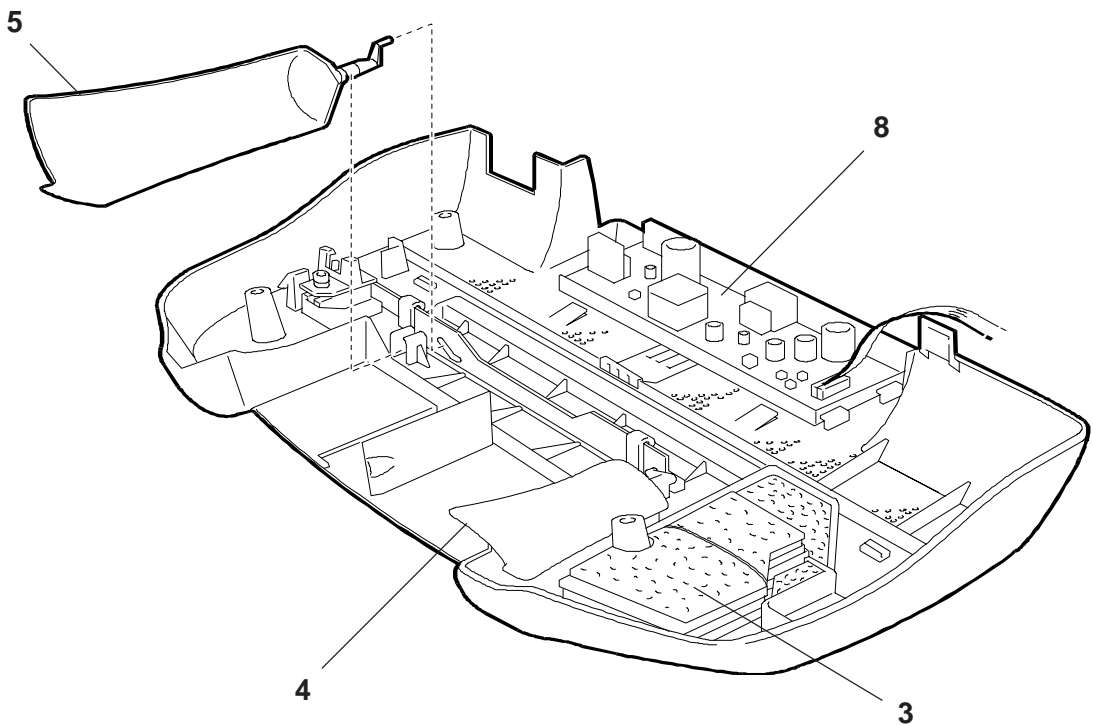
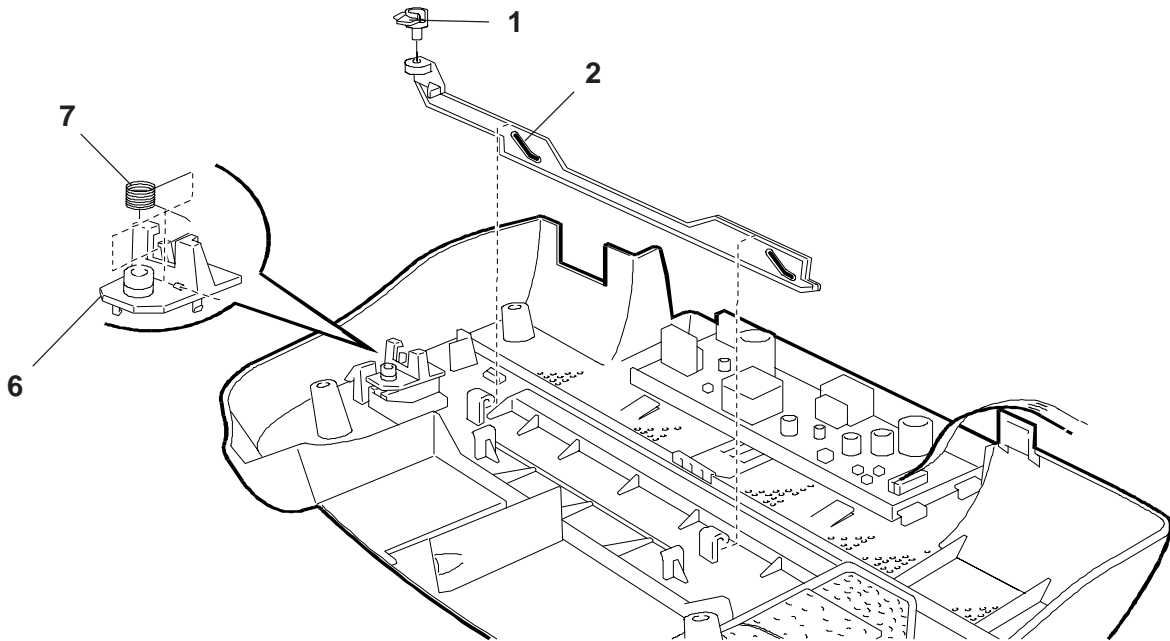
REF.	CODE	DESCRIZIONE	DESCRIPTION
1	581086 B	SUPPORTO CARTA	PAPER SUPPORT
2	203645 L	GRUPPO SCOCCA	CASING ASSEMBLY
3	203591 X	GR. RACCOGLITORE COPIE	STACKER ASSEMBLY
4	203621 C	SPORTELLLO CONNETTORE	DOOR CONNECTOR



REF.	CODE	DESCRIZIONE	DESCRIPTION
1	203610 M	LEVA SENSORE	SENSOR LEVER
2	203611 A	GRUPPO FONDELLO	BASE ASSEMBLY
3	203431 W	RUOTA INTERMEDIA ASF	INTERMEDIATE GEAR ASF
4	203603 K	COPERTURA POSTERIORE	REAR COVER



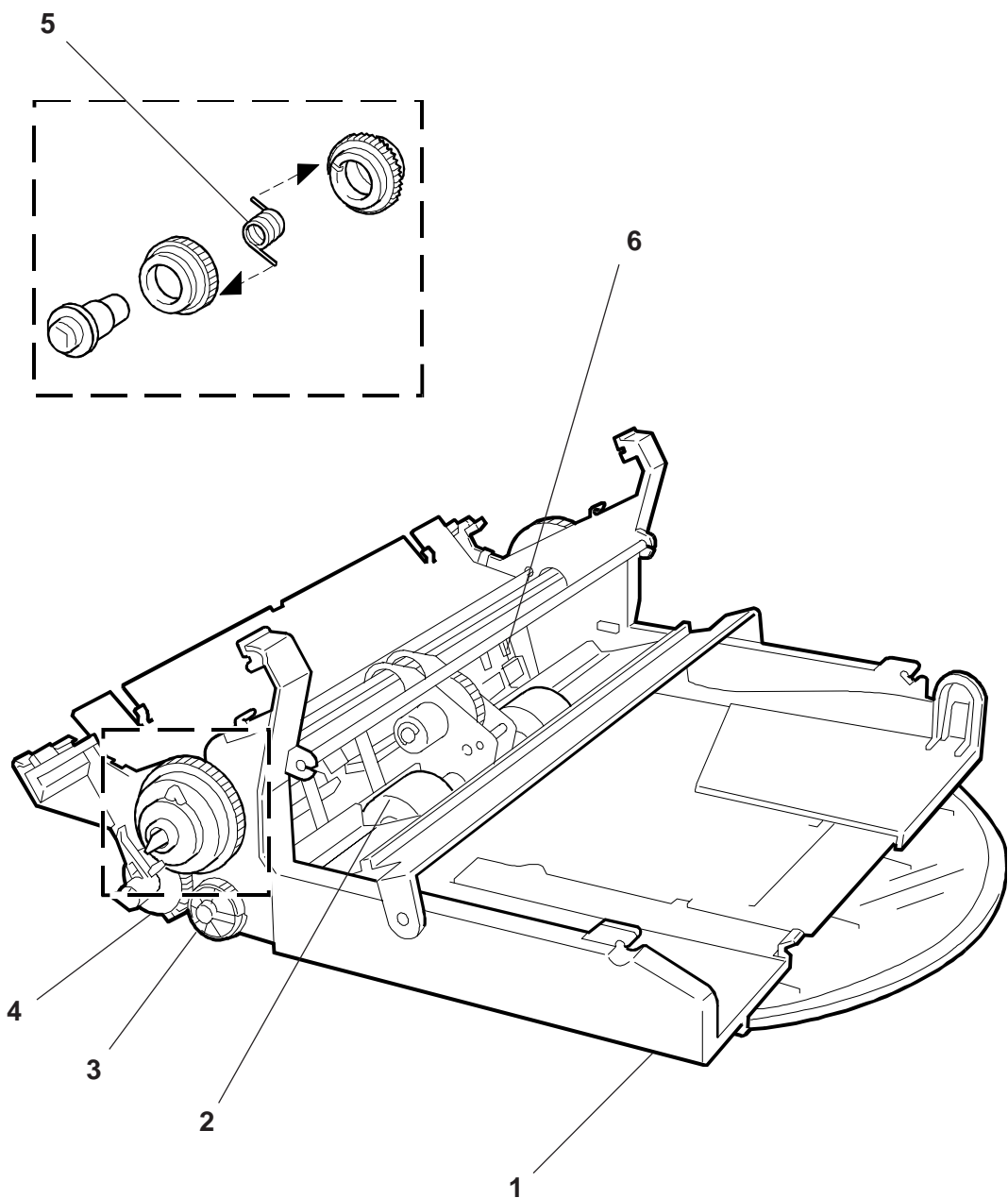
REF.	CODE	DESCRIZIONE	DESCRIPTION
1	203464 F	SELETTORE CAMMA	CAM SELECTOR
2	203465 G	TRAVERSA CAMMA	CAM BAR
3	203568 P	CARTA ASSORBENTE	BLOTTING PAPER
4	203613 C	ALETTA DESTRA	WING RIGHT
5	203614 D	ALETTA SINISTRA	WING LEFT
6	203469 L	SUPPORTO BATTUTE	BEAT SUPPORT
7	203468 K	MOLLA SELEZIONE	SELECTION SPRING
8	203470 R	GRUPPO ALIMENTATORE	POWER SUPPLY ASSEMBLY



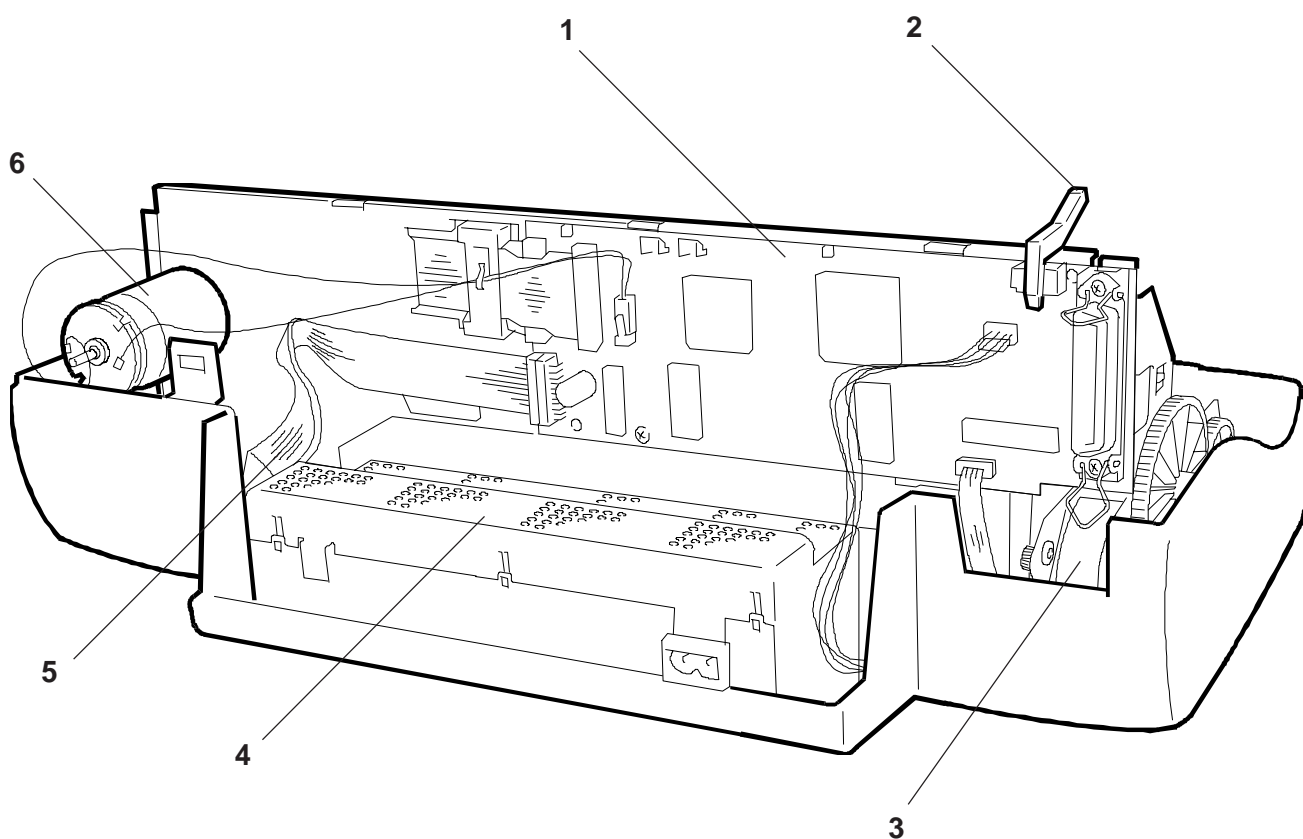
GRUPPO CASSETTO
CASSETTE ASSEMBLY

JP 883

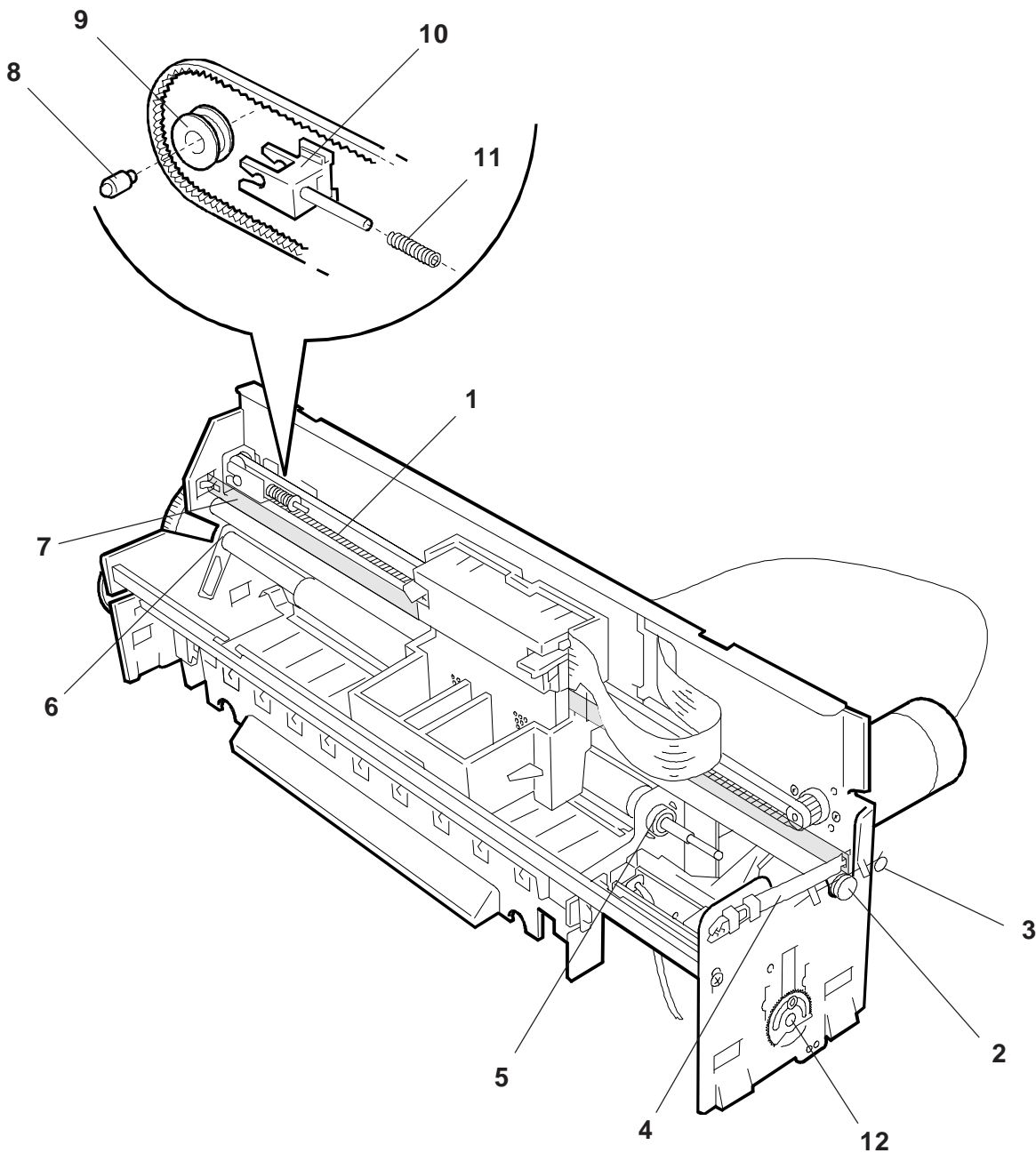
REF.	CODE	DESCRIZIONE	DESCRIPTION
1	203584 Y	GRUPPO CASSETTO	CASSETTE ASSEMBLY
2	203507 B	GOMMINO RULLO ASF	ASF ROLLER RUBBER
3	203519 E	RUOTA DENTATA	TOOTH WHEEL
4	203514 Z	RUOTA DENTATA	TOOTH WHEEL
5	203513 Y	MOLLA FRIZIONE	CLUTCH SPRING
6	203494 W	PATTINO PER ASF	SLIDING FOR ASF



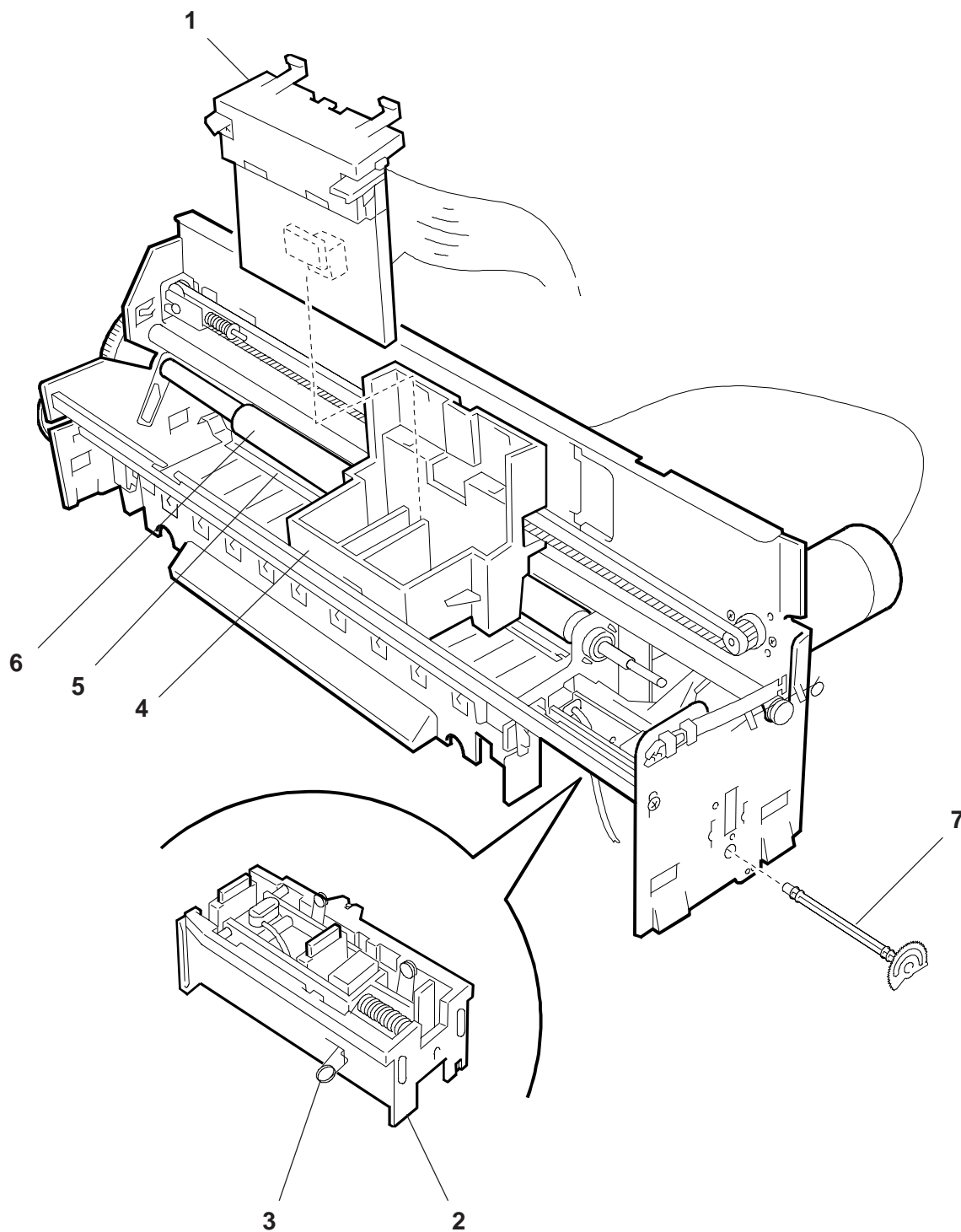
REF.	CODE	DESCRIZIONE	DESCRIPTION
1	566976 T	PIASTRA BASE	MAIN BOARD
2	203610 M	LEVA SENSORE	SENSOR LEVER
3	203426 Z	GR. MOTORE CARTA	PAPER MOTOR GROUP
4	203473 G	COPERCHIO ALIMENTATORE	POWER SUPPLY COVER
5	203474 H	CAVO FLAT - ALI / PIASTRA BASE	PSU / MAIN - FLAT CABLE
6	203370 U	GR. MOTORE CARRELLO	CARRIAGE MOTOR GROUP



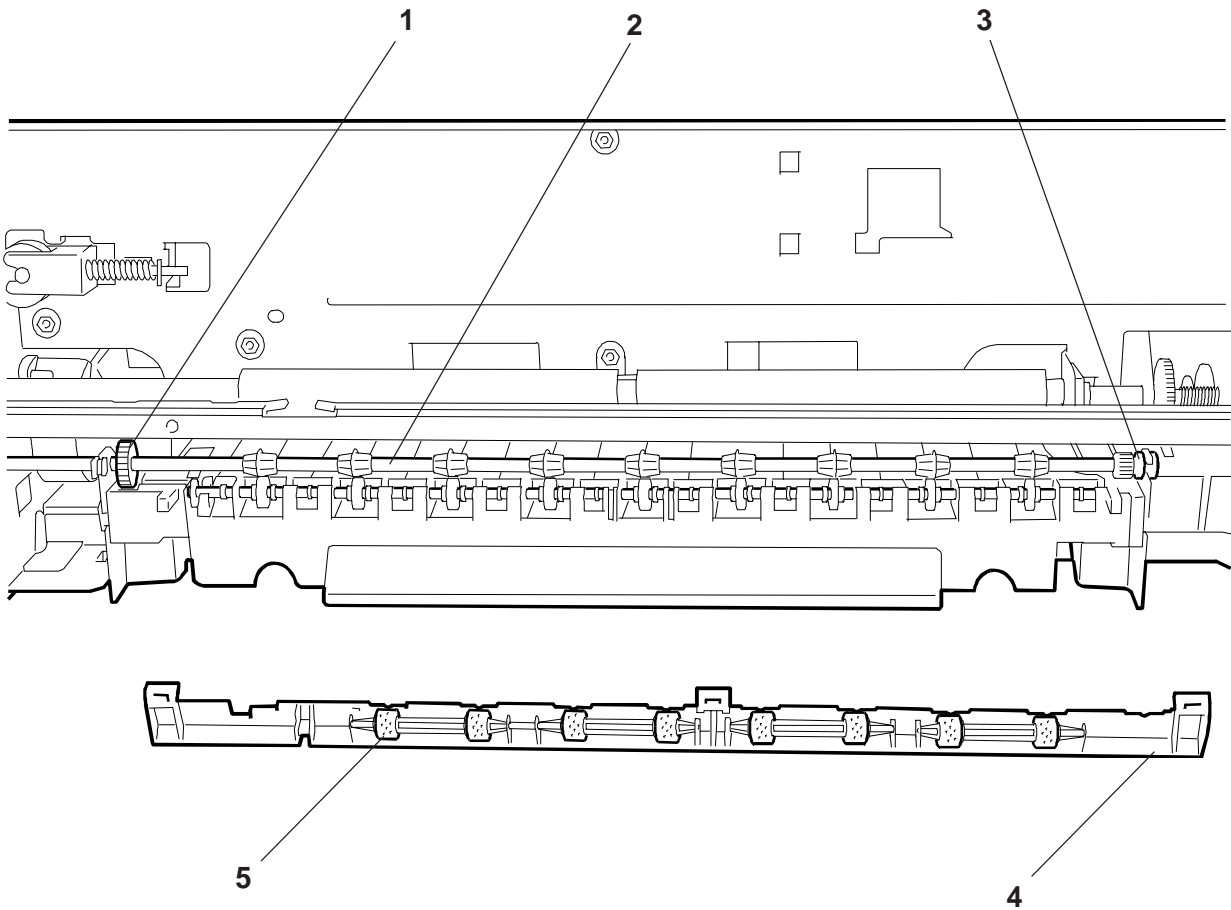
REF.	CODE	DESCRIZIONE	DESCRIPTION
1	203350 Y	CINGHIA CARRELLO	CARRIAGE BELT
2	203360 S	ALBERO CARRELLO	CARRIAGE SHAFT
3	203367 M	MOLLA BLOCCAGGIO CARRELLO	CARRIAGE BLOCKING SPRING
4	581052 Q	MOLLA BANDELLA ENCODER	ENCODER BLADE SPRING
5	203582 W	BOCCOLA DESTRA RULLO CARTA	BUSHING RIGHT PAPER ROLLER
6	203424 X	BOCCOLA SINISTRA RULLO CARTA	BUSHING LEFT PAPER ROLLER
7	203379 Z	BANDELLA ENCODER	ENCODER BLADE
8	203377 P	PERNO PULEGGIA TENDICINGHIA	PIN PULLEY BELT TENSION
9	203374 L	PULEGGIA TENDICINGHIA	BELT TENSION PULLEY
10	203375 M	FORCHETTA TENDICINGHIA	BELT TENSION FORK
11	203376 N	MOLLA TENDICINGHIA	BELT TENSION SPRING
12	203565 C	ASSE DI REGOLAZIONE	ADJUSTMENT PIN



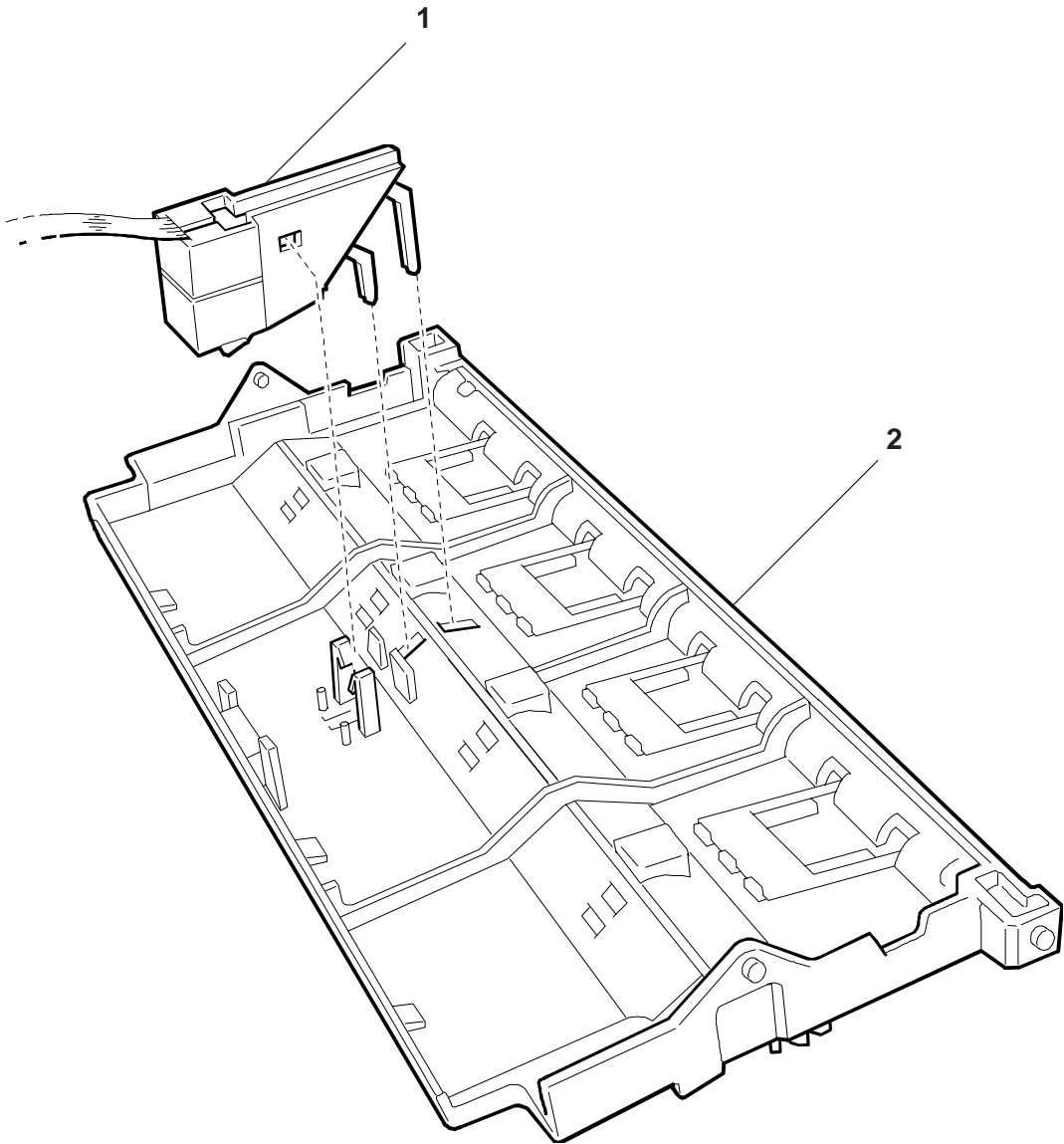
REF.	CODE	DESCRIZIONE	DESCRIPTION
1	203619 J	GR. ELETTRICO CARRELLO	CARRIAGE ELECTRONIC ASSY
2	203560 K	GR. STAZIONE	STATION ASSY
3	203314 G	MOLLA BISTABILE	BISTABLE SPRING
4	203356 J	GR. CORPO CARRELLO	CARRIAGE BODY ASSY
5	203419 A	SPOILER 2	SPOILER 2
6	203578 R	GR. RULLO CARTA	PAPER ROLLER ASSY
7	203565 C	ASSE DI REGOLAZIONE	ADJUSTMENT PIN



REF.	CODE	DESCRIZIONE	DESCRIPTION
1	203444 B	INGRANAGGIO ALBERO PICCHI	GEAR SHAFT TOOTHED
2	203593 Z	GR. ALBERO PICCHI	SHAFT TOOTHED ASSY
3	203446 D	BOCCOLA ALBERO PICCHI	BUSH SHAFT TOOTHED
4	203366 L	SUPPORTO SPUGNE	SPONGE SUPPORT
5	203364 J	SPUGNA	SPONGE



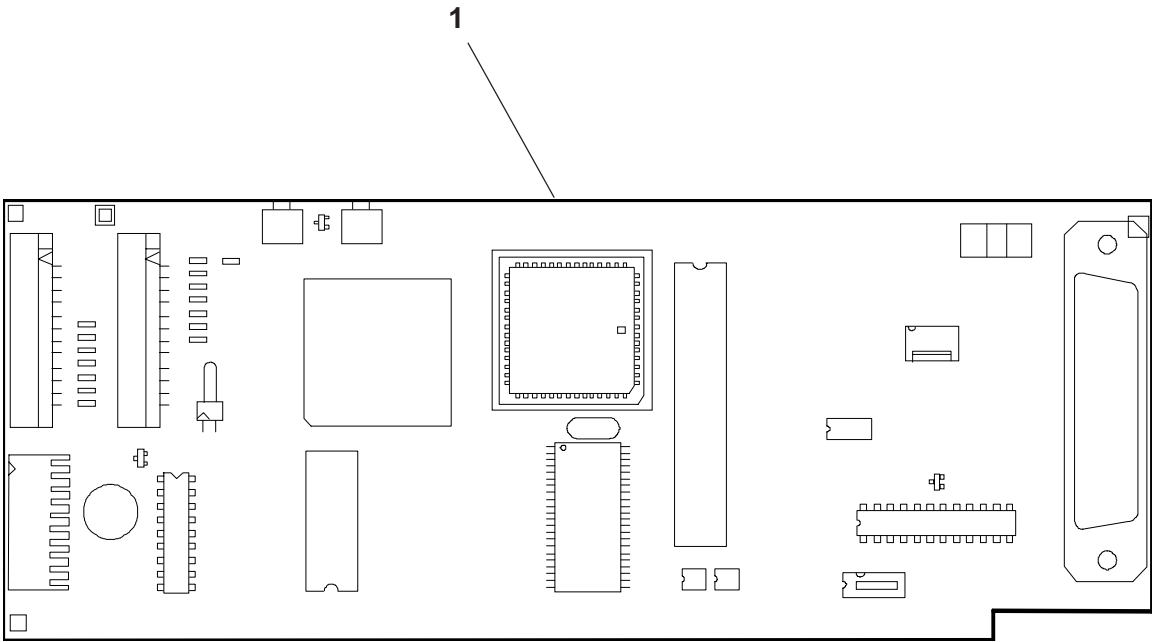
REF.	CODE	DESCRIZIONE	DESCRIPTION
1	203411 S	GR. SENSORI CARTA	PAPER SENSORS GROUP
2	203594 S	CONVOGLIATORE CARTA	PAPER CONVEYOR



PIASTRA BASE
MAIN BOARD

JP 883

REF.	CODE	DESCRIZIONE	DESCRIPTION
1	566976 T	PIASTRA BASE	MAIN BOARD



INDICE GENERALE DEI CODICI GENERAL CODES INDEX

CODICE CODE	PAGINA PAGE	CODICE CODE	PAGINA PAGE	CODICE CODE	PAGINA PAGE
203314G	9				
203350Y	8				
203356J	9				
203360S	8				
203364J	10				
203366L	10				
203367M	8				
203370U	7				
203374L	8				
203375M	8				
203376N	8				
203377P	8				
203379Z	8				
203411S	11				
203419A	9				
203424X	8				
203426Z	7				
203431W	4				
203444B	10				
203446D	10				
203464F	5				
203465G	5				
203468K	5				
203469L	5				
203470R	5				
203473G	7				
203474H	7				
203494W	6				
203507B	6				
203513Y	6				
203514Z	6				
203519E	6				
203560K	9				
203565C	8				
203565C	9				
203568P	5				
203578R	9				
203582W	8				
203584Y	6				
203591X	3				
203593Z	10				
203594S	11				
203603K	4				
203610M	4				
203610M	7				
203611A	4				
203613C	5				
203614D	5				
203619J	9				
203621C	3				
203645L	3				
566976T	7				
566976T	12				
581052Q	8				
581086B	3				