

Reference Guide

Quick Launch *Overview*



ServerWORKS™ Quick Launch provides an ease-of-use interface for customers to install one of several supported operating systems onto their newly purchased Prioris™ Server. This software application ensures greater accuracy in the installation process and enhanced ease of use over typical Network Operating System (NOS) installations, while bringing greater productivity to the user.

In addition to the software installation module, Quick Launch provides a single source for all Prioris Server Documentation, Technical Support Information including diagnostics, drivers and other related products and information from Digital.

What comes with the product

Your Quick Launch package should contain the following items:

Software Media included:

- ServerWORKS Quick Launch CD-ROM disk (Bootable)

Documentation included:

- This Quick Launch Reference Guide
- Software License

What you need to provide

Software is required from any Authorized Operating System Reseller (your choice of one of the following):

- Novell™ **
- SCO™ UNIX
- MS-Windows™ NT **
- OS/2™

**** Note:** CD-ROM Media is required for Quick Launch's *Express* Install.

Hardware Requirements

Quick Launch is designed to work with most members of the Prioris Server family. However, there are some basic system requirements when using Quick Launch. You must have:

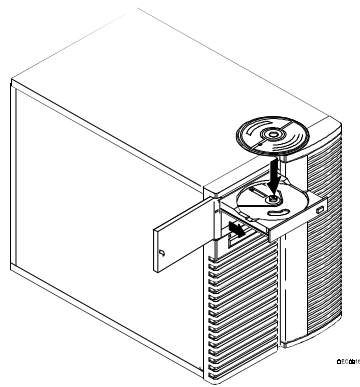
- 1.) A Quick Launch CD-ROM Disk
- 2.) A CD-ROM Drive attached to a Adaptec SCSI Controller with a BIOS level to support a bootable CD-ROM. Current information on the BIOS level is available in the Readme's.
- 3.) Minimum Hard Drive size of 500 MB
- 4.) Minimum of 16 MB of RAM
- 5.) Keyboard (Mouse is also recommended)
- 6.) SVGA Monitor attached, 256 Colors
- 7.) The "Bootable CD" option in the SCSISelect (Advanced Configuration Option) should be enabled.

Note: The Quick Launch CD-ROM disk may not work if it is used on a different system than the one that it was shipped with. The Quick Launch CD-ROM disk is paired with and matched to your system's BIOS and SCU (System Configuration Utility) .

Booting Your Server Using Quick Launch

To begin Quick Launch, follow these steps:

- Step 1** — Locate the Quick Launch CD-ROM disk in your ServerWORKS™ product package.
- Step 2** — Most CD-ROM Drives have motorized disk trays. You therefore cannot typically insert a disk into the drive without first turning on your server. If you have a motorized tray style CD-ROM drive, power on your server, open the CD-ROM disk tray, and insert the Quick Launch CD-ROM disk into the disk tray and then close it. (You may have to reboot your server if the CD-ROM disk was not available in time for use during the boot up sequence.)



- Step 3** — When prompted, choose your Language Preference. The options available are listed within the application.
- Step 4** — If EISA or PCI cards have been added to your server, the SCU will be invoked to allow you to configure the newly added card(s).

Alternatively, you can launch the SCU during the Quick Launch boot sequence by holding the right-ALT key. Upon completing the system configuration, the system will reboot.

If Quick Launch detects the presence of a Mylex™ RAID Controller, the RAID utility may also be invoked at this time. This allows the user to configure any newly installed RAID devices.

For additional information, refer to the User Documentation Section and readme files.

Step 5 — Quick Launch is optimized to load files to an MS-DOS™ partition on the hard drive.

Note: Digital strongly recommends that this MS-DOS partition be created. Failure to create this MS-DOS partition will mean that no SCU or RAID utilities, diagnostics or other utilities, and drivers will reside on your system and will not be readily available. The Express Installation option will not work without this partition either.

Quick Launch asks you the following question when it tries to create such an MS-DOS partition:

Please enter a size for the MS-DOS partition:

Your options are any value from 00 to 99. These values are for the size of the MS-DOS partition in Megabytes. By entering a "00" response, the Setup Process is canceled and it invokes the Quick Launch Main Menu to allow documents to be viewed or drivers and utilities diskettes to be created.

- The minimum hard drive MS-DOS partition space requirement for the *Express* Installation Method for any supported Novell versions is 20 megabytes.
- The minimum hard drive MS-DOS partition space requirement for the *Express* Installation Method of MS-Windows NT is 90 megabytes.

If an MS-DOS partition size is entered, the Server will reboot after the partition has been created and formatted.

If your hard drive already has an MS-DOS partition on it and it is smaller than 90 MB, Quick Launch will inform you of the existing partition size and will let you continue or it will instruct you to use FDISK to remove and replace the MS-DOS partition.

After completing your Operating System installation, it is recommended that you keep the MS-DOS partition on your hard drive. Utilities, including RAID, drivers, SCU, and diagnostics will reside on this MS-DOS partition. All of these are useful in maintaining and updating your server and operating system.

Step 6 — The Quick Launch Main Menu will now open.

Two Boot Modes

Step 7 — Select your Boot Mode: Quick Launch has been designed with two modes: Boot Mode and Non-Boot Mode.

- ***Boot Mode*** is defined in the previous steps. The Boot Mode is for users who wish to use Quick Launch to initially install their operating system and configure their system.
- ***Non-Boot Mode*** is for system reference, enabling Quick Launch to be used on other systems that have MS-Windows 3.1 or Windows for Workgroups™ and are fitted with a CD-ROM drive. This allows a user to access the Quick Launch CD-ROM disk to reference on-line documentation about the entire Prioris Server product family. This mode also allows the Quick Launch CD-ROM disk to be used to create diskettes for drivers and utilities diskettes that are required for *Conventional* NOS installation processes.

To access the Quick Launch CD-ROM disk in a Non-Boot mode, insert the CD-ROM disk into your CD-ROM drive and, from the MS-Windows Program Manager, use the Run command in the File Menu. The path to your CD-ROM may be determined by using the browse option in the Run Window. The executable name for Quick Launch is "QLAUNCH.EXE". The file is located in the root of the CD-ROM disk. Add the CD-ROM Drive letter to the name of the file (*i.e.* D:\QLAUNCH.EXE). Hit the "OK" button. The application will then open.

About the Main Menu Screen

The Main Menu Screen of Quick Launch provides four primary buttons. They are:

- Using Quick Launch
- User Documentation
- Install Software
- Service Information

Using Quick Launch provides a tutorial on the Quick Launch product.

Step 8 — *Read Materials and View Tutorial if needed:*

User Documentation provides an on-line library resource for all available product information for each of the Prioris Server models. Only documentation for the Prioris Server that is being installed is available if the CD-ROM is "booted". If the Quick Launch CD-ROM disk is accessed from the "Non-Boot" mode, documentation is available for any supported Prioris Server.



Install Software is chosen to begin an operating system installation process.

Service Information provides on-line reference options for all forms of Technical Support Information and Services.

Step 9 — *Installing Software:* To begin, click on the “*Install Software*” option on the Main Menu. The Installation Screen will then appear.

Ready to Install Your Operating System...

Three Installation Methods

There are three installation methods that are supported by Quick Launch: *Express Install*, *Conventional Install*, and *Replicate*.

Which Installation Method should you use . . .

The following chart provides information about which installation methods and versions are supported for each Operating System:

Operating System	Version	Supported by Express & Replicate	Supported by Conventional
Novell™	3.12	✓	✓
Novell™	4.10	✓	✓
MS-Windows™ NT	Server 3.51	✓	✓
IBM™ OS/2	2.11	Not Supported	✓
IBM™ OS/2	3.0	Not Supported	✓
SCO Unix	5.0	Not Supported	✓

Note: Supported versions are subject to change without notice and support is at the discretion of the Software OEM.

Selecting the Installation Method and Operating System

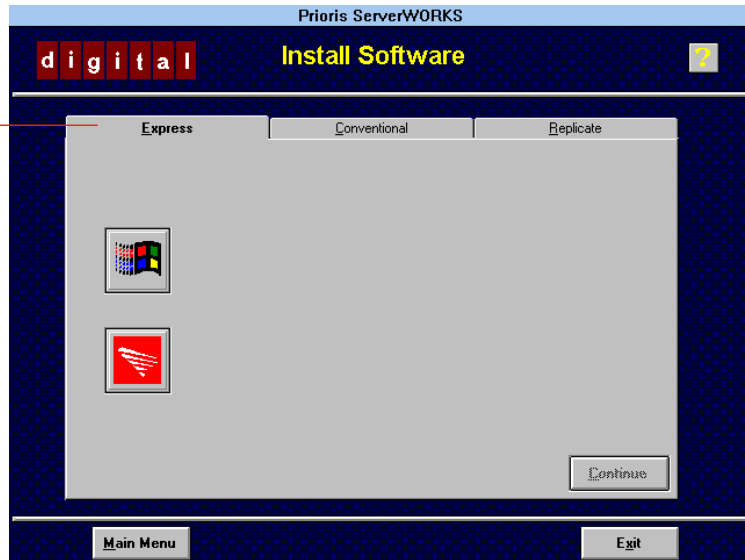
From the Quick Launch Install Software Menu Screen, there are three Menu Options: 1.) ***Express*** 2.) ***Conventional*** and 3.) ***Replicate***

The Express Install: The *Express* Installation method is for those users who wish to install one of the supported operating systems and want the fastest and easiest way to install it.

The *Express* Install allows you to select the operating system that you wish to install including version numbers. Depending upon the operating system that you select, a list of questions are then presented. Upon answering all of those questions, the *Express* Install will then instruct the user what to do, e.g., "Insert NOS CD-ROM into CD-ROM drive".

Once all of the information has been provided the installation is seamless and typically requires minimal attention or monitoring until the installation of the operating system is complete. There are a few exceptions to this rule. When you are installing MS-Windows NT, the installation asks if it can create a drive partition. There may also be other exceptions depending upon the version of operating system you are installing.

Installation
Methods



At the end of the *Express* Installation process, if an MS-DOS partition was created, Quick Launch automatically saves the Installation Parameters to the MS-DOS partition. The information that was used during the *Express* Install can then be used during a future "Replicate" install on another server. The information is stored in a file named: "REPLICAT.INI". *See the Replicate section of this guide for more information.*

The Conventional Install: *Conventional* install allows you to create device driver diskettes to facilitate updates to the options drivers provided by the Network Operating System Manufacturers. Unlike the *Express* Install, the *Conventional* Installation is a manual one and follows the installation process as dictated by the operating system manufacturer. This method allows the user to create bootable diskettes for Diagnostics, SCU, and RAID utilities. As a reminder, these diskettes can also be made on any personal computer that has MS-Windows 3.11 or WFW and a CD-ROM drive using the "Non-Boot" Mode.

The Replicate Install: Replicated installations are useful when more than one identically configured server needs to be installed with the same operating system and operating system parameters, except obvious differences such as the server name and the IP(x) address.

This feature allows you to use a "*REPLICAT.INI*" file that resides in the MS-DOS partition of another Prioris Server that used the Quick Launch Express Installation feature. The file is in the root directory of the MS-DOS Partition. Use the MS-DOS copy command to place this file on diskette. Quick Launch asks for this file and will prompt the user to insert this diskette into drive "A" (typically your 3 1/2" floppy drive). *Replicate* will pre-fill most entries in the *Express* Install menus and will then proceed like a normal *Express* Install.

Summary

Step 10 — Other QL Features: Upon completing the installation of your Network Operating System, your server still requires System Administrative functions to be done such as printer setup, group and user functions, etc.

To help make your server easier to maintain in the future, the following files reside in the MS-DOS partition (if you elected to create an MS-DOS partition during the initial steps of the Quick Launch installation process): Diagnostics, SCU and RAID utilities, EZSCSI, plus driver updates for future use when maintaining and/or upgrading your server.

The following are executable file names for the files that will still reside on your MS-DOS Partition (if you created it):

<i>Executable Filename</i>	<i>Purpose</i>	<i>Path</i>
DIAGNOSE.BAT	Launches System Diagnostics	C:\DIAG\..
RAID.BAT	Launches RAID Utility	C:\RCU\..
SCU.BAT	Launches Server Configuration Utility	C:\SCU\..
EPP3SMC.EXE	Device Driver for parallel port	C:\EPP\..