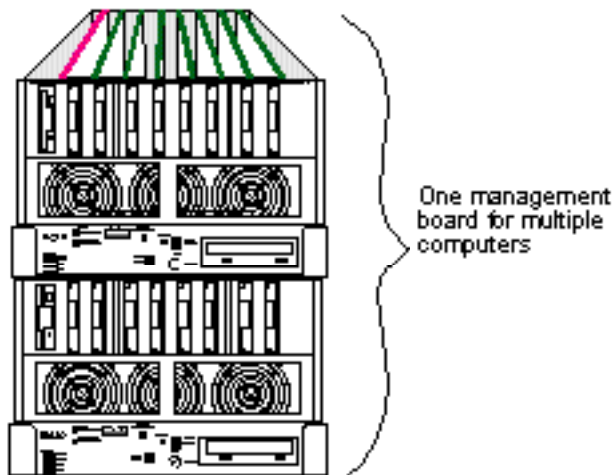


## Cubix Advantage In Lab Environments Over 1U Systems

Although many test environments contain a mix of unmanageable towers and desktops, below is an illustration of Cubix multi-server Density Systems as compared to multiple 1U systems.

### BETTER CONTROL



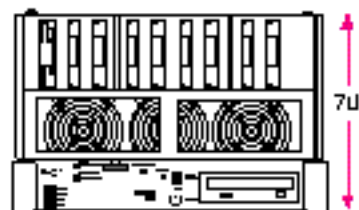
Purposeful hard reboot and power cycling from one management board to hundreds of Cubix computers. Big cost savings!

### 1U COMPUTERS



One management board per computer. Lacks one-to-many control. Big cost!

### BETTER DENSITY

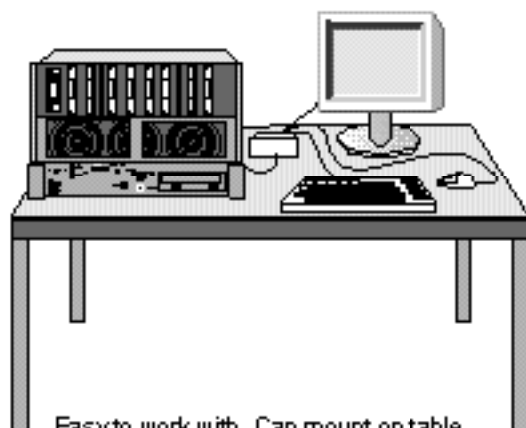


8 computers, plus built-in KVM, in 7U.

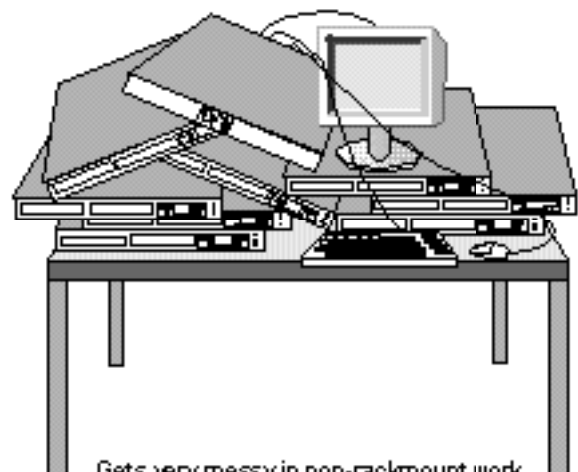


8 computers, plus added expense KVM, in 9U.

### BETTER CONSOLIDATED PACKAGING

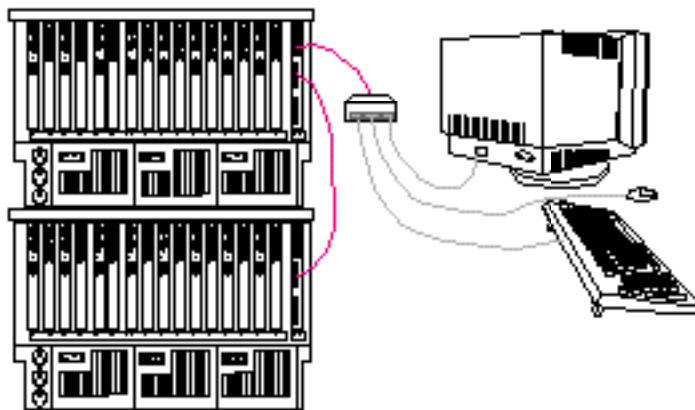


Easy to work with. Can mount on table, under the desk, in a rack. Self-contained. Easy to move from place-to-place.

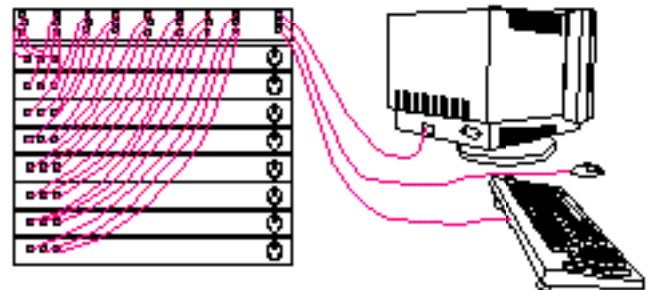


Gets very messy in non-rackmount work environments.

## BETTER SERVICEABILITY

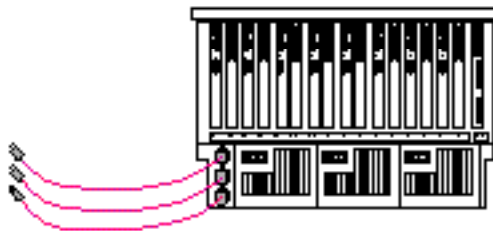


Cableless internal KVM, 1 KVM cable per 8 computers. Front removeable cableless drives. Easy to access single-board computers.

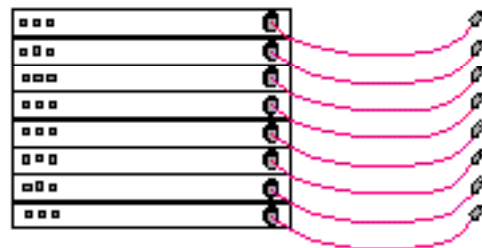


Lock-tight packaging, with 24 KVM cables per 8 computers

## BETTER POWER SYSTEM



3 power cords and 650 W for 8 computers. N+1 power supplies deliver better uptime. If power supply dies, computers still operate.



8 power cords and 1600 W for 8 computers. No redundancy in power supplies. If power supply dies, so does computer.

## BETTER VALUE



Lower Space Requirements  
Lower Operating Costs  
Lower Capital Expenditures



Higher Space Requirements  
Higher Operating Costs  
Higher Capital Expenditures