



Cisco 827 Router Cabling and Setup Quick Start Guide

This document describes the basic process of cabling and configuring the Internet access device, the Cisco 827 router. For advanced cabling information, refer to the *Cisco 827 Routers Hardware Installation Guide*. For advanced configuration information, refer to the *Cisco 827 Routers Software Configuration Guide*. These documents are available on the Cisco Documentation CD-ROM and on the World Wide Web.

You can access the most current Cisco documentation on the World Wide Web at the following sites:

- <http://www.cisco.com>
- <http://www-china.cisco.com>
- <http://www-europe.cisco.com>

Parts List

The shipment of your Cisco 827 router includes the following items:

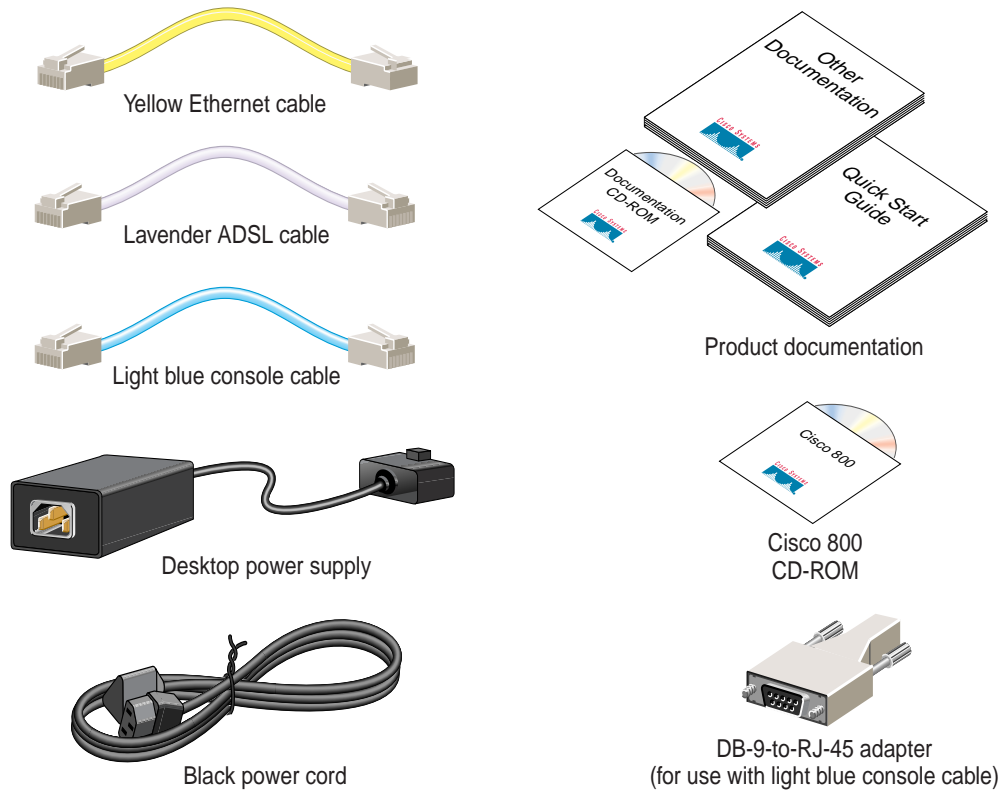
- One Cisco 827 router
- One yellow Ethernet cable
- One lavender ADSL cable
- One blue console cable
- One DB-9-to-RJ-45 adapter (for use with the blue console cable)
- One black power supply
- One black power supply cord
- 800 and SOHO Series Product Documentation CD

[Figure 1](#) shows the items included with the router. If any of the items is missing or damaged, contact your customer service representative.



Corporate Headquarters:
Cisco Systems, Inc., 170 West Tasman Drive, San Jose, CA 95134-1706 USA

Copyright © 2001. Cisco Systems, Inc. All rights reserved.

Figure 1 *Items Included with the Router*

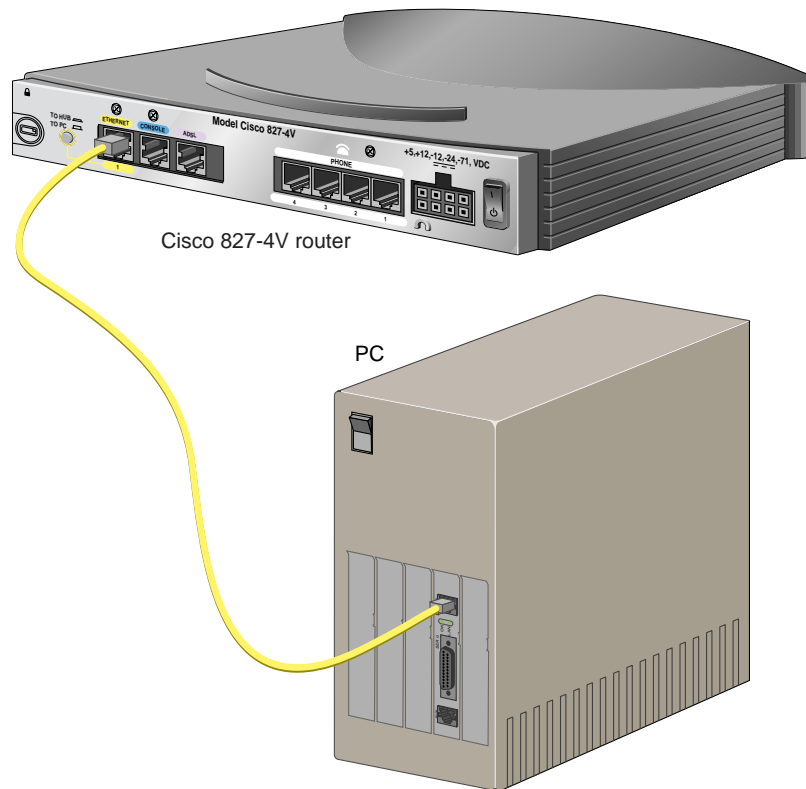
Verify the PC Setup

Before you begin, verify that each computer that will be connected to the router has a network interface card (NIC) installed and that Transmission Control Protocol/Internet Protocol (TCP/IP) has been loaded and configured. For more information on how to configure TCP/IP, refer to the *PC Configuration Instructions to Establish Cisco Router-to-PC Communications*, which is available on the Cisco Documentation CD-ROM, and refer to information available the Microsoft web site.

Connect the Cisco 827 Router to a PC

Follow these steps to connect the Cisco 827 router to a PC:

Figure 2 Connecting a Cisco 827 Router to a PC

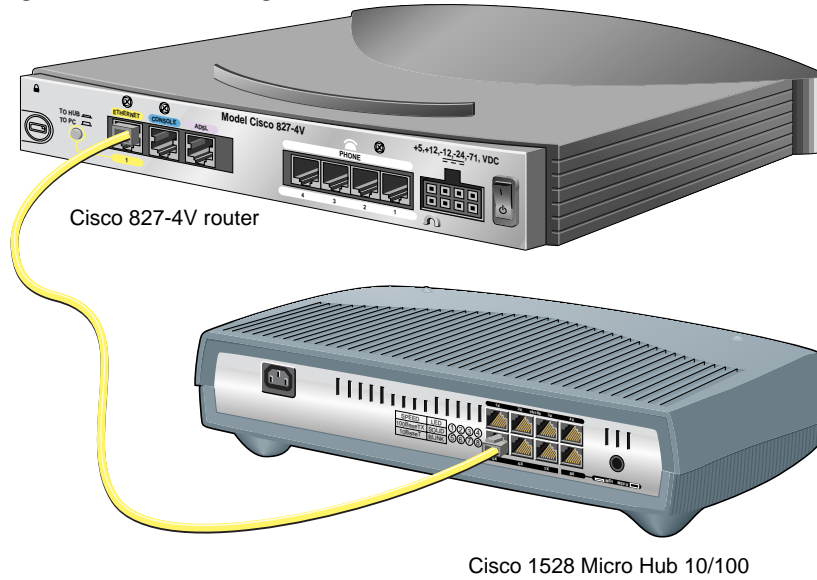


-
- Step 1** Connect the yellow Ethernet cable from the yellow Ethernet port on the back panel of the router to the Ethernet port on the NIC on the computer.
- Step 2** Verify that the TO HUB/TO PC switch on the left side of the back panel has been set to the TO PC position (out). If the button is in, press it to set it to the out position.
-

Connect the Cisco 827 Router to a Hub

Follow these steps to connect the Cisco 827 router to a hub:

Figure 3 *Connecting a Cisco 827 Router to a Hub*



-
- Step 1** Connect the yellow Ethernet cable from the yellow Ethernet port on the back panel of the router to the Ethernet port on the hub.
- Step 2** Verify that the TO HUB/TO PC switch on the left side of the back panel has been set to the TO HUB position (in). If the button is out, press it to set it to the in position.
-

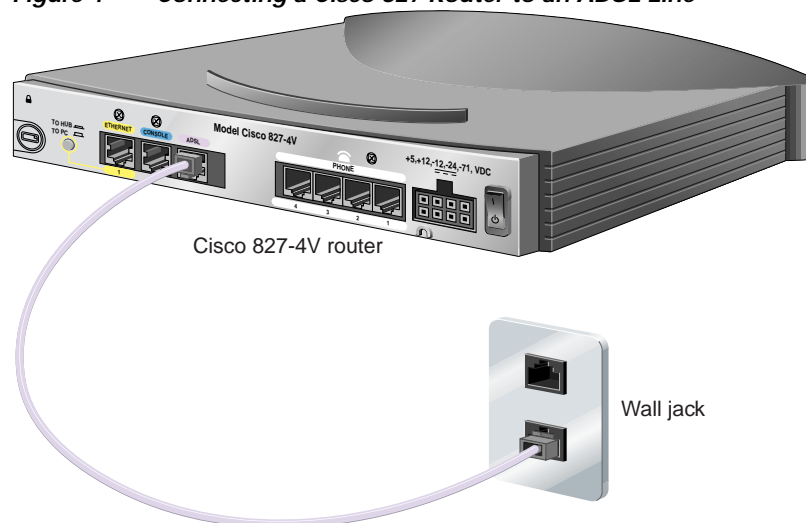
Connect an ADSL Line

Follow these steps to connect an ADSL line to the ADSL port on your router.

**Note**

The following instructions are for a straight-through ADSL cable, but they also apply if you are using a crossover cable to connect your ADSL line. One ADSL cable is supplied with the Cisco 827 router, and it is selected during the ordering process. If you have microfilters or do not have the phone service on the same line, use the lavender CAB-ADSL-RJ11 cable. If you have a splitter installed, use the lavender with blue stripe CAB-ADSL-RJ11X cable.

Figure 4 Connecting a Cisco 827 Router to an ADSL Line



-
- Step 1** Connect the lavender ADSL cable to the lavender ADSL port on the router.
- Step 2** Connect the other end of the ADSL cable to the external wall jack.
-

Connect a Telephone or Fax Machine

If you have a Cisco 827-4V router, you can connect an analog telephone or fax machine to your router. Use the cables provided with these devices.

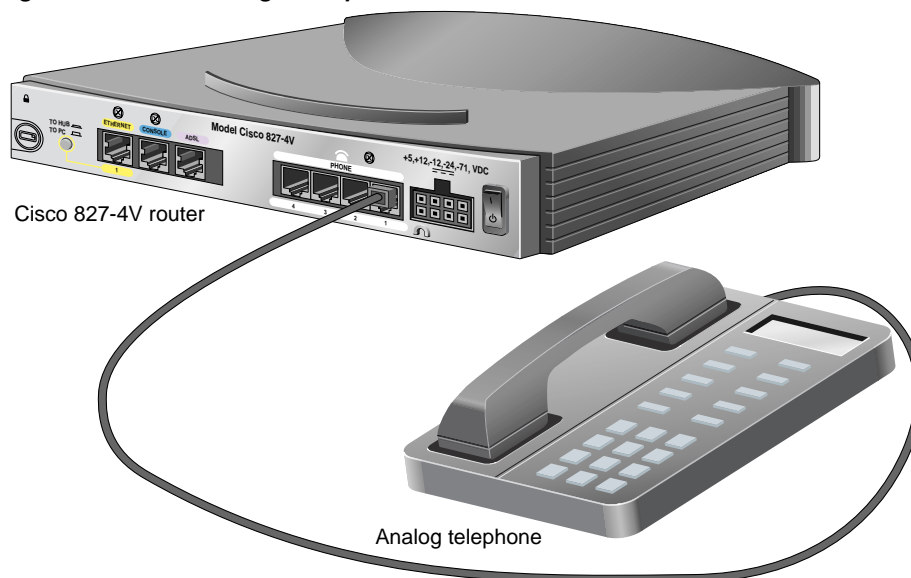
The gray PHONE 4, 3, 2, and 1 ports are RJ-11 connectors. If you are outside of North America, you must buy and attach adapters that allow your telephones or faxes to be connected to these RJ-11 connectors. In some countries, these adapters need additional electronics to convert the telephones or faxes to work properly with the router phone ports. For example, in the United Kingdom, you must buy an adapter that also provides a *master socket*, which causes incoming calls to ring the connected devices. For information on recommended master sockets, see the *Cisco 827 Routers Hardware Installation Guide*.



Caution

Do not connect the router telephone ports to the telephone wall jack. These ports are not meant for direct connection to the public network. This connection can damage your router.

Figure 5 Connecting a Telephone to a Cisco 827-4V Router

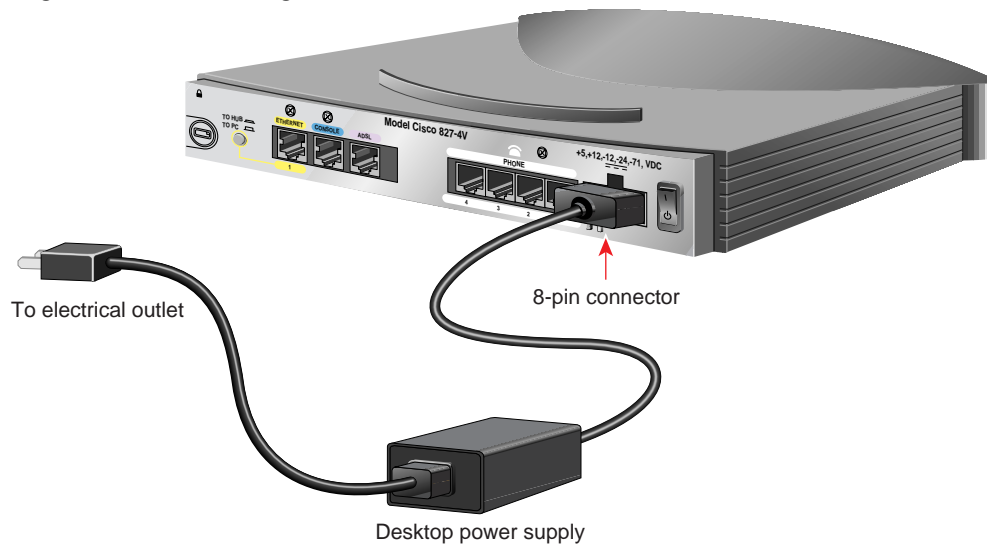




- Step 1** Connect one end of the telephone cable to the gray PHONE 4, 3, 2, or 1 port.
- Step 2** Connect the other end of the cable to your device.

Connect the Power and Turn On the Router

Follow these steps to connect power to the Cisco 827 router and turn it on:

Figure 6 Connecting the Power to a Cisco 827 Router



-
- Step 1** Make sure the router power is off. Press the power switch to standby ().
- Step 2** Connect the power supply cable to the 8-pin connector on the router.
- Step 3** Connect the socket end of the power cord to the desktop power supply.
- Step 4** Connect the plug end of the power cord to an electrical outlet.
- Step 5** Turn ON the router. Press the power switch to on ().
-

Set Up the Router to Access the Network

The Cisco Router Web Setup (CRWS) software is already loaded on your Cisco 827 router. You can use CRWS to configure the Cisco 827 router. If you purchased your router through an Internet service provider (ISP), it is possible that your router has been configured for use at your site. If you know this is not the case, or if you have purchased Cisco IOS software for the router since installing it, we recommend that you use CRWS to configure the router.

-
- Step 1** Log on to the PC connected to the router through the ETHERNET port.
- Step 2** Open a web browser.
- Step 3** Type in the following universal resource locator (URL):
http://10.10.10.1
- Step 4** Click the Router Setup link in the Cisco Router Web Setup home page, and follow the instructions that appear in the page that is displayed.
- Step 5** If the CRWS home page does not appear when you enter the URL **http://10.10.10.1**, test the connection between the PC and the router by doing the following:
- Check that the OK LED on the router is on, and check the cable connection between the router and the PC. Be sure that the TO HUB/TO PC button is in the TO PC position.
 - If the CRWS home page still does not appear, verify that your web browser's work offline option is disabled.
 - If the web page still does not appear, verify that your PC is automatically configured to receive an IP address, by following the instructions in *Cisco Router Web Setup User Guide*, which is available on the Cisco Documentation CD-ROM.
-

Verifying the LEDs

The following table describes the normal pattern for LEDs and what to do if you get an abnormal pattern. For more information on all LEDs, see the *Cisco 827 Routers Hardware Installation Guide*.

LED	Normal Pattern	Explanation	If Abnormal Pattern
OK	On	Power is supplied to the router.	If off, see the <i>Cisco 827 Routers Hardware Installation Guide</i> .
PHONE 1, 2, 3, 4	On	Telephone or fax machine is connected.	If off, see the <i>Cisco 827 Routers Hardware Installation Guide</i> .
ADSL CD	On	ADSL line is connected.	If off, see the <i>Cisco 827 Routers Hardware Installation Guide</i> .
ADSL RXD	Blinks	ADSL port receives data.	If off, see the <i>Cisco 827 Routers Hardware Installation Guide</i> .
ADSL TXD	Blinks	ADSL port sends data.	If off, see the <i>Cisco 827 Routers Hardware Installation Guide</i> .
ETHERNET 1	On	Ethernet device is connected.	If off, toggle TO HUB/TO PC button (if set to TO HUB [in], reset to TO PC [out] or vice versa). If still off, see the <i>Cisco 827 Routers Hardware Installation Guide</i> .
ETHERNET RXD	Blinks	Ethernet port is receiving a packet.	If off, see the <i>Cisco 827 Routers Hardware Installation Guide</i> .
ETHERNET TXD	Blinks	Ethernet port is transmitting a packet.	If off, see the <i>Cisco 827 Routers Hardware Installation Guide</i> .

About the Product CD

The 800 and SOHO Series Product Documentation CD contains the technical publications for the 800 and SOHO series routers.

System Requirements

Processor	Pentium 150 MHz or faster recommended
PC OS	Microsoft Windows 95 Microsoft Windows 98 Microsoft Windows 2000 Microsoft Windows NT 4.0
Memory	64-MB DRAM
Drives	4x CD-ROM drive
Monitor	Color monitor capable of 800 x 600 pixel resolution
Software	Netscape 3.0 or later Internet Explorer 3.0 or later Adobe Acrobat Reader 3.0 or later

Documentation Exceptions

This CD does not contain certain publications that were incomplete or unavailable when this CD was produced. These documents are in the 800 and SOHO platform hardware accessory kits and should be consulted before installing and configuring your system. You can also access these documents on the Documentation page on Cisco Connection Online (CCO) at www.cisco.com.

- *Cisco 800 Series Routers Release Notes*
- *Cisco 828 and SOHO 78 Routers Release Notes*
- *IOS Release Notes for the Cisco 800 Series Router*
- *IOS Release Notes for the Cisco 828 Router*
- *Cisco Router Web Setup User Guide*

Using the CD Interface

When the CD is first launched, it automatically opens a browser session and displays the CD interface in the browser window. You can use the list of books in the left pane of your display to navigate directly to the book you want to view. Within the interface, you can use your mouse to:

- Hover over book titles in the left column for an overview of the document before opening a document.
- Select a book title from the document list on the left or from the document drop-down menu on the CD title bar.
- Click the Cisco Systems corporate icon to display Cisco support and service information.
- Click **About This CD** (notepad icon) to get additional information about this CD.
- Click **Send Us Your Feedback!** (pencil & notepad icon) to provide us with your feedback.
- Click **Get Acrobat Reader** to install a free copy of Adobe Acrobat Reader 4.0.

Changing the Display Properties of Documents

When you first launch the CD, you will notice a list of books in the left pane of your display that you can use to navigate directly to the book you want to view. When you select the document, Acrobat Reader opens the book in .pdf format and provides a list of topics in the left frame of the Acrobat window. To disable this option and view the book fully in the window, click the **Show/Hide Navigation Pane** button on the Acrobat toolbar. Note that when hiding bookmarks, the thumbnails, annotations, and articles are also hidden.

Printing Documents

To print a document:

-
- Step 1** Click the **Printer** icon on the Acrobat toolbar.
The Windows Print Dialog box appears.
- Step 2** Select your default printer and click **OK**.
-

Ordering Printed Copies of Documents

You can order printed copies of the documents on this CD and additional copies of this CD on the 800 and SOHO platform product ordering pages on Cisco Connection Online (CCO). Registered CCO users can order documentation for other Cisco products and the Cisco Documentation CD-ROM (containing all Cisco documentation) through our online Subscription Services at <http://www.cisco.com/cgi-bin/subcat/kaojump.cgi>.

Nonregistered CCO users can order documentation through a local account representative by calling Cisco's corporate headquarters (California, USA) at 408 526-4000 or, in North America, by calling 800 553-NETS (6387).

You can access the most current Cisco documentation on the World Wide Web at <http://www.cisco.com>, <http://www-china.cisco.com>, or <http://www-europe.cisco.com>.

AccessPath, AtmDirector, Browse with Me, CCIP, CCSI, CD-PAC, *CiscoLink*, the Cisco *Powered* Network logo, Cisco Systems Networking Academy, the Cisco Systems Networking Academy logo, Fast Step, Follow Me Browsing, FormShare, FrameShare, GigaStack, IGX, Internet Quotient, IP/VC, iQ Breakthrough, iQ Expertise, iQ FastTrack, the iQ Logo, iQ Net Readiness Scorecard, MGX, the Networkers logo, *Packet*, RateMUX, ScriptBuilder, ScriptShare, SlideCast, SMARTnet, TransPath, Unity, Voice LAN, Wavelength Router, and WebViewer are trademarks of Cisco Systems, Inc.; Changing the Way We Work, Live, Play, and Learn, Discover All That's Possible, and Empowering the Internet Generation, are service marks of Cisco Systems, Inc.; and Aironet, ASIST, BPX, Catalyst, CCDA, CCDP, CCIE, CCNA, CCNP, Cisco, the Cisco Certified Internetwork Expert logo, Cisco IOS, the Cisco IOS logo, Cisco Press, Cisco Systems, Cisco Systems Capital, the Cisco Systems logo, Enterprise/Solver, EtherChannel, EtherSwitch, FastHub, FastSwitch, IOS, IP/TV, LightStream, MICA, Network Registrar, PIX, Post-Routing, Pre-Routing, Registrar, StrataView Plus, Stratm, SwitchProbe, TeleRouter, and VCO are registered trademarks of Cisco Systems, Inc. and/or its affiliates in the U.S. and certain other countries.

All other trademarks mentioned in this document or Web site are the property of their respective owners. The use of the word partner does not imply a partnership relationship between Cisco and any other company. (0108R)

Copyright © 2001, Cisco Systems, Inc.
All rights reserved.